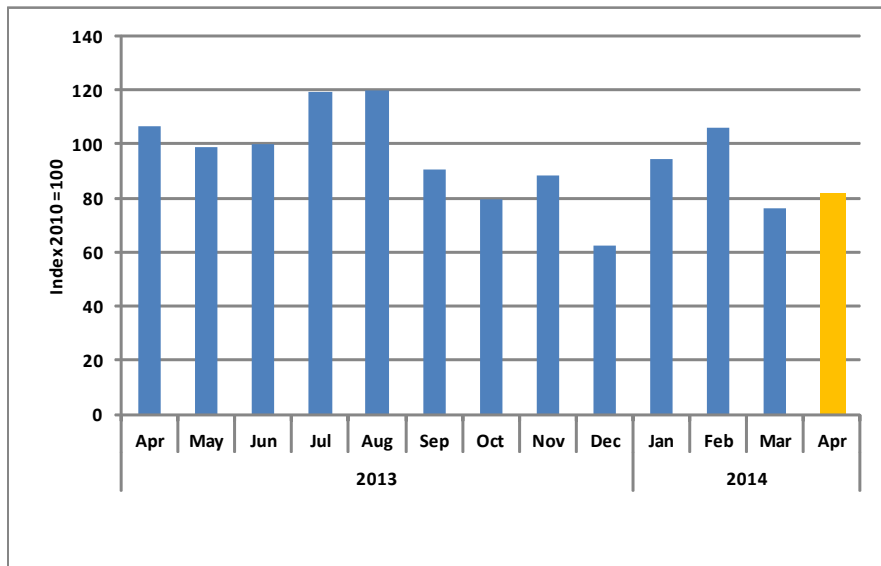




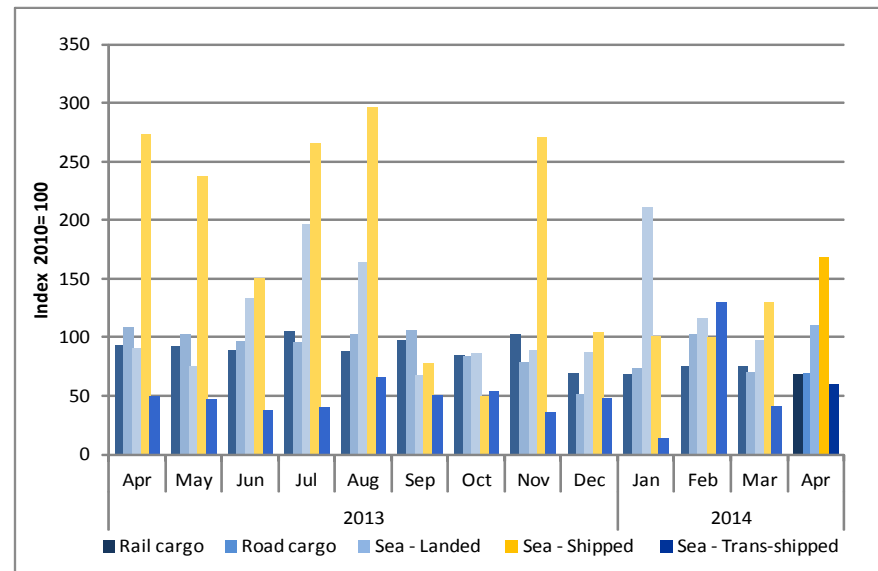
Chart 1: Composite Transport Index



The transport sector submitted an index of 81.7 points in April 2014, increasing by 5.7 points from the preceding month (March 2014), albeit below the referred month (March 2010 =100).

Year-on-year, the transport sector continued to decelerate; registering 81.0 points compared to 106.7 points registered in April 2013. This was reflected from rail and road sub sectors that declined to 68.6 and 69.9 points, respectively. However, Sea transportation recorded a growth of 104.3 points, although a downward trend when compared to a 106.5 point of April 2013(Chart 2).

Chart 2: Transport Sub-Sectors Index



Despite the positive performance of sea transportation categories on a month to month basis, Cargo Shipped (Sea-Shipment category) continued to improve recording 168.0 points, but was below 273.0 points registered in April 2013 (Chart 2).

Year-on-year, the index of sea-landed and sea-transhipped categories increased by 22.4 per cent and 21.1 per cent, recording 110.8 points and 60.1 points, respectively.