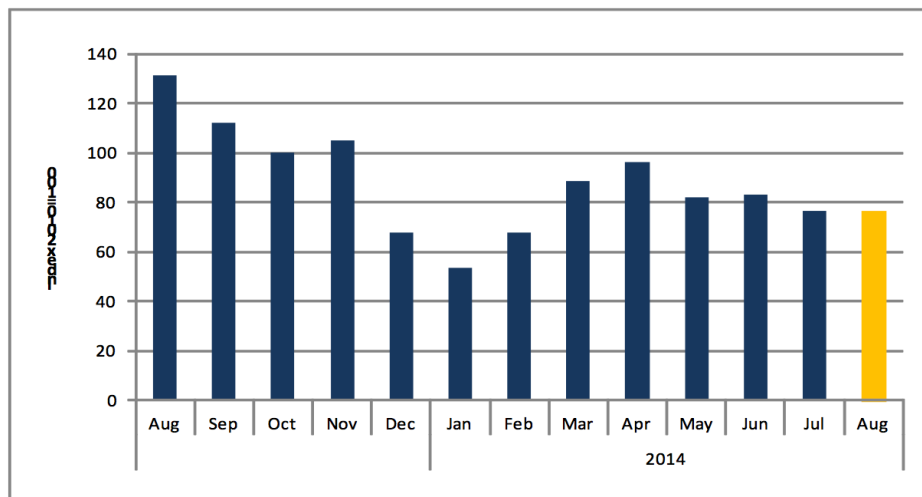


**Chart 1: Livestock Marketed Index (Respective Month 2010 = 100)**

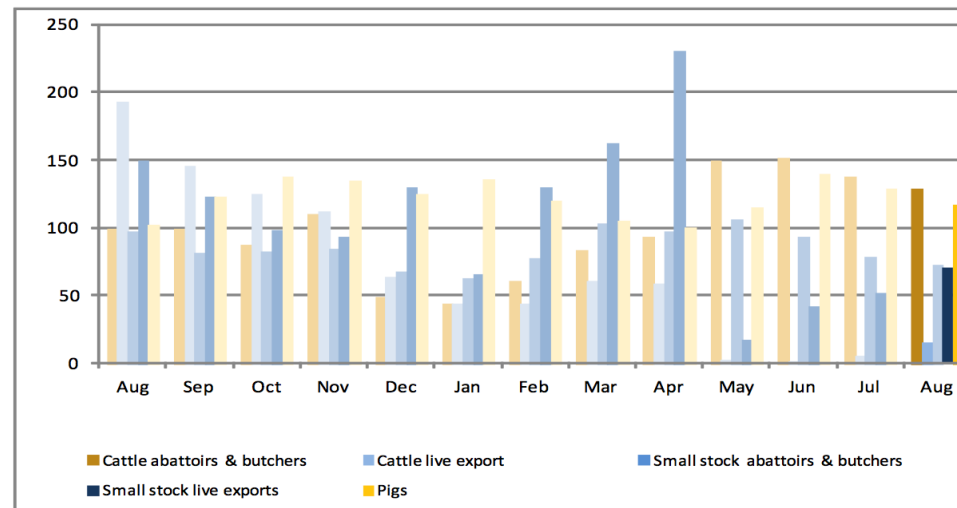


The composite livestock marketed index for August 2014 stood at 76.7 points when compared to 108.6 points recorded in August 2013, representing a decline of 29.8 per cent y/y; and remained unchanged on m/m basis.

On average the composite livestock marketed stood at 87.8 points in 2014, a decline of 20.3 per cent y/y. Since January 2014, on average, cattle marketed index stood at 78.1, a decline of 38.7 per cent y/y.

The total number of livestock marketed in August 2014 stood at 97,972, an increase of 1.5 per cent on m/m basis. Despite the growth of the livestock marketed on a monthly basis, the performance of the livestock marketed on a y/y basis is on a contracting trend recording a decline of 40.6 per cent.

**Chart 2: Livestock Marketed Sub-Sector Index**



The composite index of live, export abattoir and butchered cattle stood at 144.7 points; a decline of 50.4 per cent on y/y, an increase of 1.4 per cent m/m.

The index of live, export abattoir and butchered small stock stood at 143.6 points, a decline of 39.9 per cent on y/y, an acceleration of 10.0 per cent m/m. Cattle live export index stood at 15.8 points, a decline of 85.5 percent on y/y; an acceleration of 214.9 per cent on an m/m basis.

Small stock index stood at 71.1 points, a decline of 52.3 per cent compared to the august 2013; an increase of 37.5 percent on a monthly basis.

The index of pigs stood at 105.3 points in August 2014, a decline of 2.6 per cent y/y, while a decline of 21.6 per cent m/m.



Table 1: Number of Livestock marketed ('000)

		Cattle		Small stock		Pigs	Total
		Export	Live	Export	Live		
2010	Jan	9	11	47	11	3	80
	Feb	8	11	78	23	3	124
	Mar	13	16	105	44	4	182
	Apr	19	12	114	35	4	185
	May	17	6	65	12	3	103
	Jun	18	17	105	41	3	183
	Jul	18	22	80	47	3	170
	Aug	12	24	69	37	3	145
	Sep	8	22	55	37	3	125
	Oct	10	19	52	31	4	115
	Nov	10	21	58	20	2	111
	Dec	6	13	75	30	1	124
2011	Jan	7	14	43	16	3	82
	Feb	8	18	75	15	4	119
	Mar	14	19	110	26	4	173
	Apr	16	14	78	27	4	140
	May	15	17	89	40	3	163
	Jun	17	16	76	31	3	143
	Jul	20	21	71	38	3	152
	Aug	12	21	43	26	3	104
	Sep	8	15	35	24	3	86
	Oct	11	20	36	27	4	97
	Nov	9	15	49	18	2	93
	Dec	6	10	73	32	1	123

Source: Meat board of Namibia

		Cattle		Small stock		Pigs	Total
		Export	Live	Export	Live		
2012	Jan	10	10	49	14	3	86
	Feb	10	7	77	20	3	117
	Mar	10	9	97	33	3	151
	Apr	11	7	90	27	6	141
	May	11	6	88	31	3	139
	Jun	13	9	83	37	3	145
	Jul	9	11	80	35	3	138
	Aug	7	18	62	31	1	119
	Sep	6	14	63	32	4	119
	Oct	15	17	38	30	5	106
	Nov	17	18	62	20	1	118
	Dec	8	8	55	29	1	101
2013	Jan	13	13	61	14	4	105
	Feb	9	18	95	19	3	144
	Mar	16	27	124	38	3	207
	Apr	16	27	94	53	3	193
	May	22	26	93	46	4	190
	Jun	19	26	78	65	3	191
	Jul	12	33	73	38	2	159
	Aug	12	28	73	46	3	162
	Sep	12	25	61	38	4	139
	Oct	11	20	62	30	4	126
	Nov	13	18	64	29	4	128
	Dec	6	10	53	40	4	112
2014	Jan	5	7	47	20	4	84
	Feb	7	7	58	40	4	116
	Mar	10	10	78	50	3	151
	Apr	11	10	74	70	3	168
	May	18	0	80	5	3	107
	Jun	18	0	70	13	4	106
	Jul	17	1	59	16	4	97
	Aug	16	3	55	22	3	98

Table 2: Composite Index of Livestock marketed

		Cattle		Small stock		Pigs	Weighted index
		Export	Live	Export	Live		
2010	Jan	71.1	65.2	62.4	34.7	108.4	65.6
	Feb	65.4	69.7	104.2	75.1	116.5	78.0
	Mar	104.4	99.5	139.6	143.9	136.2	115.3
	Apr	158.1	75.0	151.7	115.6	123.8	126.4
	May	139.4	36.0	86.8	39.8	87.9	85.8
	Jun	145.3	104.9	139.2	134.5	90.9	128.6
	Jul	145.1	138.8	105.9	153.5	95.8	133.5
	Aug	97.5	150.1	91.6	119.7	110.1	114.6
	Sep	62.3	136.8	73.3	120.4	100.6	93.9
	Oct	80.9	115.9	68.7	100.6	118.6	92.1
	Nov	83.6	129.1	77.4	64.8	62.6	93.6
	Dec	47.1	79.1	99.2	97.5	48.6	72.7
2011	Jan	71.1	86.3	57.0	51.2	109.5	72.3
	Feb	65.4	113.5	99.1	49.6	117.7	88.0
	Mar	104.4	117.2	145.8	86.2	137.6	117.0
	Apr	158.1	88.4	103.8	89.0	125.0	117.7
	May	139.4	106.2	117.9	131.1	88.8	122.0
	Jun	145.3	98.9	100.5	101.8	91.8	115.6
	Jul	145.1	127.0	94.3	124.4	96.7	124.8
	Aug	97.5	127.1	56.6	83.6	111.2	96.9
	Sep	62.3	94.9	46.9	77.6	101.6	71.7
	Oct	80.9	124.2	47.2	88.2	119.8	88.8
	Nov	83.6	94.9	65.2	58.3	63.2	80.0
	Dec	47.1	64.6	97.1	103.8	49.1	68.4

		Cattle		Small stock		Pigs	Weighted index
		Export	Live	Export	Live		
2012	Jan	55.2	61.9	65.3	46.5		60.5
	Feb	62.0	45.4	101.8	65.3	100.8	67.5
	Mar	113.4	55.1	128.2	106.6	105.2	98.0
	Apr	136.1	42.8	119.3	88.2	187.9	101.9
	May	121.0	39.3	116.9	100.4	100.2	92.7
	Jun	141.6	54.6	110.8	121.5	84.8	104.5
	Jul	165.3	69.4	106.4	114.5	100.5	116.4
	Aug	99.5	109.4	82.8	100.4	34.7	96.4
	Sep	67.7	85.2	83.9	105.5	128.0	82.2
	Oct	91.9	107.5	50.9	99.4	182.6	91.9
	Nov	76.1	109.2	82.2	66.1	39.7	85.2
	Dec	48.2	48.7	72.9	95.6	36.5	57.5
2013	Jan	80.9	70.0	80.3	46.2	127.4	76.2
	Feb	79.4	119.1	125.9	62.6	92.2	100.6
	Mar	83.2	171.3	164.0	124.5	92.2	131.5
	Apr	135.8	153.9	124.9	172.0	103.1	140.9
	May	184.0	154.9	123.3	150.7	119.8	156.5
	Jun	157.0	161.1	103.1	214.3	94.6	149.2
	Jul	103.1	203.1	96.9	125.8	61.2	132.5
	Aug	98.9	193.0	97.0	149.1	102.2	131.6
	Sep	99.2	145.7	81.2	123.0	123.3	112.4
	Oct	87.2	124.6	82.0	97.8	137.7	100.3
	Nov	110.2	112.3	84.9	93.8	134.3	104.8
	Dec	48.8	64.0	67.8	130.1	124.6	67.7
2014	Jan	43.7	44.1	62.8	65.5	135.7	53.5
	Feb	60.7	44.3	77.6	129.7	119.7	67.8
	Mar	83.5	60.8	103.4	162.6	104.9	88.8
	Apr	93.4	59.1	97.7	230.2	100.1	96.3
	May	149.0	2.2	105.8	17.7	114.6	82.1
	Jun	151.4	1.5	93.2	41.9	140.0	83.1
	Jul	137.7	5.0	78.9	51.7	129.2	76.7
	Aug	128.9	15.8	72.5	71.1	116.5	76.7

## Methodology

### **Data Sources**

The livestock subsector contributed 1.5 per cent to the Gross Domestic Product. Livestock subsector growth declined by 39.2 per cent in 2013. The data are obtained from the Meat board of Namibia, data collected for monthly sectoral reports are monthly number of livestock marketed for: Live export to South Africa and Angola for both cattle, goat and sheep, Export to abattoirs and butchers (Cattle, goats and sheep), and pigs

### **Base year**

Livestock sectoral report is harmonised with the quarterly and annual national accounts base year 2010.

### **Calculations of index**

The index is calculated based on the 2010 base year volumes and 2010 weights. The index is a magnitude of the volume changes over time, with reference to the volume of the base year 2010. Index is calculated as a ratio of a volume of a specific component in a specific month to the total volume of that component in 2010.