

MONTHLY TRADE STATISTICS BULLETIN

JULY 2013



Est. by Statistics Act 9 of 2011

**Namibia Statistics
Agency**

MISSION STATEMENT

“In a coordinated manner we produce and disseminate relevant, quality and timely statistics that are fit-for-purpose in accordance with international standards and best practice”

VISION STATEMENT

“Be a high performance institution in statistics delivery”

CORE VALUES

Performance

Integrity

Service focus

Transparency

Accuracy

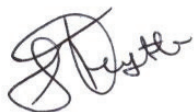
Partnership

PREFACE

Foreign trade statistics plays an important role in a nation's economy as it measures values and quantities of goods that, by moving into or out of a country, add or subtract from a nation's material stock of goods. Foreign trade statistics are essential for the formulation of monetary, fiscal, commercial and regional integration policies. Moreover, in the Southern African Customs Union (SACU), reliable import statistics are crucial when it comes to revenue sharing among member states.

Since Namibia's independence, government policy has been to develop, promote and diversify the country's exports; to expand and consolidate market shares of existing markets, penetrate new markets and to reduce the over reliance on imports from one or two main trading partners. Prior to independence, trade flow between Namibia and the rest of the world was not independently recorded. Since 1990, positive developments have taken place, both in the particulars recorded and the methods of recording. Computerization of procedures at the Directorate of Customs and Excise in the Ministry of Finance has continued to enhance the timely dissemination and analysis of trade statistics through prompt transfer of captured trade data at Customs to the Namibia Statistics Agency.

This bulletin presents the monthly trade data for July 2013.



John Steytler
Statistician-General

Table of Contents

1. Introduction	5
2. Key Developments	6
2.1 Trade Balance	6
2.2 Exports to Key markets	7
2.3 Imports from Key markets	7
2.4 Top exports	8
2.5 Top imports	8
3. Trade by economic blocs	9
3.1 Export by economic blocs.....	9
3.2 Import by economic blocs.....	9
4. Trade by mode of transport	10
4.1 Exports by mode of transport	10
4.2 Imports by mode of transport.....	11
5. Conclusion	13
6. List of Terms and Definitions	14
7. Appendix	15

1. Introduction

The mandate of the Namibia Statistics Agency is to produce and disseminate relevant, quality and timely statistics, this include statistics relating to imports and exports. This report presents a summary of trade statistics in terms of imports and exports of merchandise goods for the month July 2013.

Foreign trade statistics derived from records of trade flows across international borders are invaluable for the formulation of commercial, fiscal and monetary policies of any country. The basic information for the compilation of trade statistics is collected and /or captured based on import/export declarations made by traders.

2. Key Developments

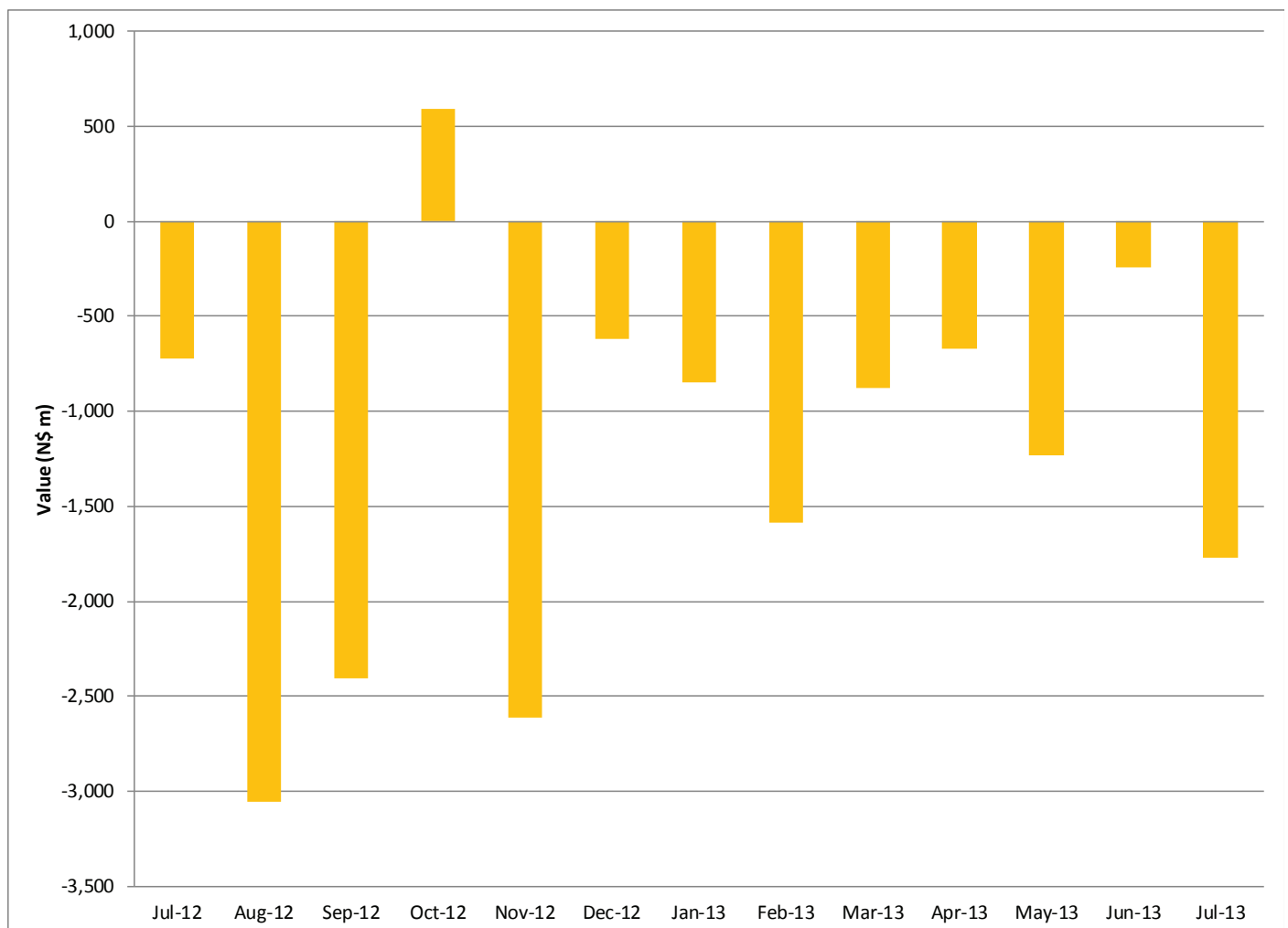
2.1 Trade Balance

Namibia's total exports amounted to N\$4.8 billion, while N\$6.6 billion worth of imports was recorded in July 2013, resulting into a trade deficit of N\$1.8 billion.

Compared to the previous month when the deficit was N\$0.2 billion, the trade deficit escalated by 636.5 percent. When compared to the same month of the preceding year, the increase in the deficit was less pronounced at 145.4 percent when a deficit was N\$0.7 billion was recorded.

Expenditure on imports increased by 47.7 percent compared to the previous month. When compared to the same month of the preceding year imports increased by 36.6 percent. Export earnings on the other hand, recorded an increase of 14.2 percent in July 2013 compared to the previous month, and by 17.5 percent in the corresponding month of the preceding year.

Chart 1 Trade Balance



2.2 Exports to Key markets

Namibia's main export destinations during the month of July 2013 in order of value of exports were Botswana, South Africa, Angola, Switzerland and United States of America. These five destinations accounted for 64.0 percent of Namibia's exports during the month under review. Export values and shares to each of these markets are listed in table 1.

Table 1: Main export destination

Country	Export value (N\$ m)			Share	Percentage change	
	Jul-12	Jun-13	Jul-13		Monthly	Annual
Botswana	34	1,066	1,330	27.5	24.8	3,763.2
South Africa	632	630	693	14.3	10.0	9.6
Angola	384	344	377	7.8	9.7	-1.8
Switzerland	83	474	354	7.3	-25.4	327.5
USA	208	234	340	7.0	45.5	63.5
Other countries	2,775	1,487	1,743	36.0	17.2	-37.2
TOTAL	4,116	4,234	4,837	100.0	14.2	17.5

2.3 Imports from Key markets

The main countries from which Namibia imported goods from during the month of July 2013 were South Africa, Denmark, Tanzania, China and Italy. These five countries accounted for 81.7 percent of Namibia's imports during the month under review. There was a strong growth in imports from Denmark, Tanzania and Italy, in particular tugs and pusher crafts (525 million), Diesel (409 million) and Petrol (216 million) respectively. Import values and shares from each of these markets are listed in table 2.

Table 2: Main source of imports

Country	Import value (N\$ m)			Share	Percentage change	
	Jul-12	Jun-13	Jul-13		Monthly	Annual
South Africa	3,534	3,182	3,980	60.2	25.1	12.6
Denmark	5	8	537	8.1	6,679.3	11,540.8
Tanzania	13	2	409	6.2	17,764.1	3,091.8
China	128	134	253	3.8	88.5	97.6
Italy	6	20	223	3.4	1,035.7	3,911.2
Other countries	1,154	1,129	1,207	18.3	7.0	4.6
TOTAL	4,839	4,475	6,609	100.0	47.7	36.6

2.4 Top exports

Namibia's top five export commodities during the month of July 2013 were precious stones, fish, ores, zinc and vehicles. These five products accounted for 76.0 percent of total earnings during the month under review up from 74.3 percent in the previous month and unchanged when compared to the same month of the preceding year.

Table 3: Top five exports

HS code and description	Export value (N\$ m)						
	Jul-12	Share	Jun-13	Share	Jul-13	Share	% change Jul 2012/13
71:Precious stones (diamonds etc)	1,004	24.4	1,696	40.0	1,988	41.0	98.1
03:Fish	467	11.3	606	14.3	590	12.2	26.3
26:Ores	1,094	26.6	590	13.9	492	10.2	-55.0
79:Zinc	291	7.1	75	1.8	400	8.2	37.4
87:Vehicles	204	5.0	181	4.3	217	4.5	6.0
Other Products	1,056	25.7	1,088	25.7	1,162	24.0	10.0
Total	4,116	100.0	4,236	100.0	4,848	100.0	17.8

2.5 Top imports

Namibia's top five import commodities during the month of July 2013 were minerals fuels and mineral oils; vehicles; ships, boats and floating structures; boilers, machinery and mechanical appliances and electrical machinery and equipments. These five products accounted for 53.3 percent of total expenditure during the month under review up from 35.4 percent in the previous month and 50.1 percent in the same month of the preceding year.

Table 4 Top five imports

HS code and description	Import value (N\$ m)						
	Jul-12	Share	Jun-13	Share	Jul-13	Share	% change Jul 2012/13
27:Mineral fuels and oils	703	14.5	142	3.2	1,215	18.4	72.9
87:Vehicles	669	13.8	673	15.0	798	12.1	19.4
89:Ships, Boats and Floating structures	382	7.9	1	0.0	528	8.0	38.2
84:Boilers, machinery and mechanical appliances	420	8.7	475	10.6	506	7.7	20.4
85:Electrical machinery and equipment	253	5.2	293	6.5	478	7.2	89.4
Other Products	2,412	49.9	2,892	64.6	3,084	46.7	27.8
Total	4,838	100.0	4,475	100.0	6,609	100.0	36.6

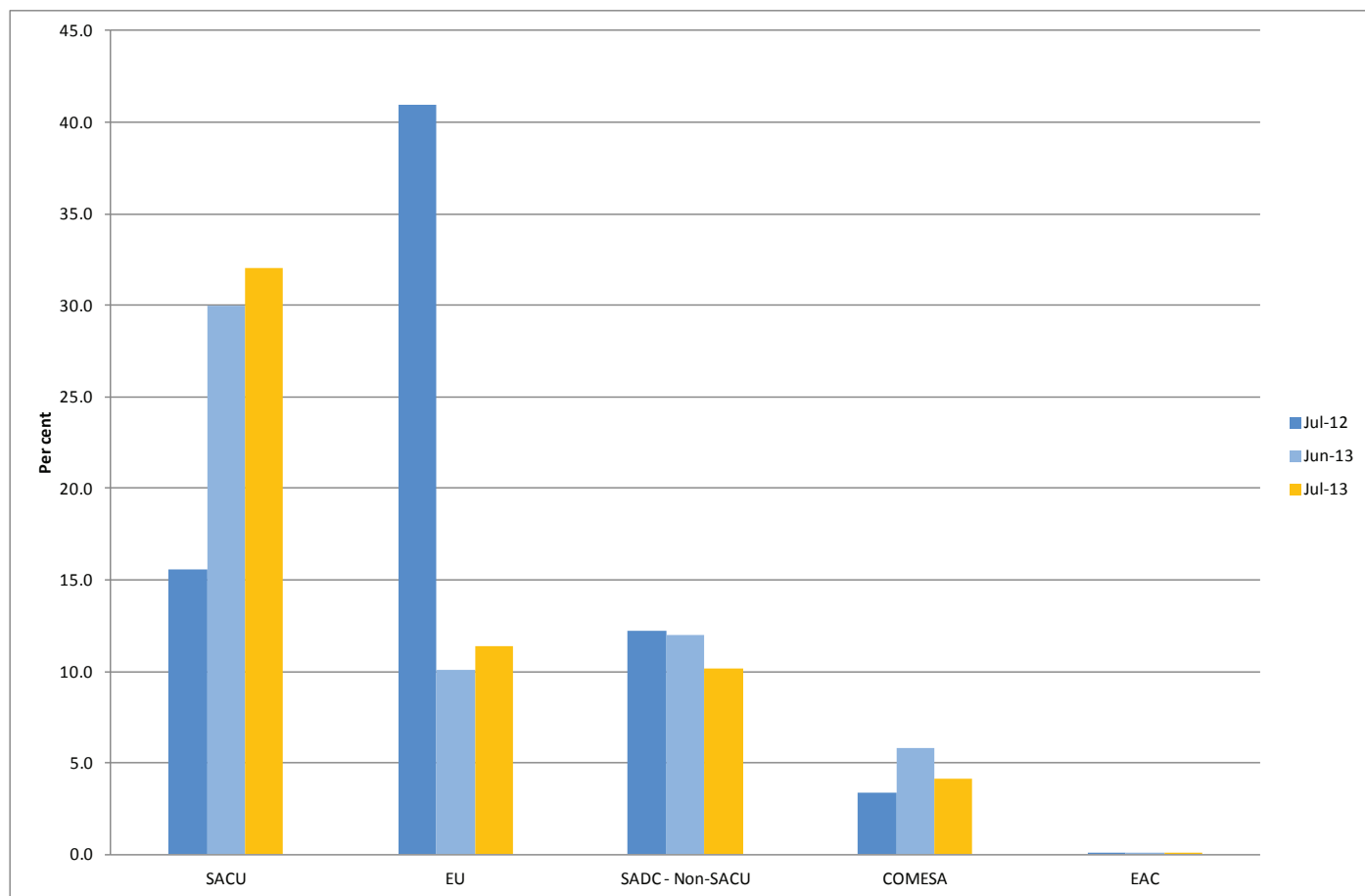
3. TRADE BY ECONOMIC BLOCS

3.1 Export by economic blocs

The Southern Africa Customs Union (SACU) was the largest market for Namibia's exports, accounting for 55.4 per cent of total exports to an economic bloc during the month under review. The export value to SACU member states increased from N\$ 1.7 billion in June to N\$ 2.0 billion in July 2013. The EU was the second largest market for Namibia's exports, accounting for a share of 19.7 per cent, an increase of 26.5 per cent month on month and a decline of 59.3 on an annual basis.

Exports to SADC excluding SACU countries, took the third position, accounting for 17.5 per cent of exports during the review period. It also decreased by 5.9 percent when compared to the previous month but increased by 20.9 per cent when compared to the same month a year ago. This is illustrated by chart 2 which shows a comparison of Namibia's export to different economic blocs.

Chart 2 Export by economic blocs

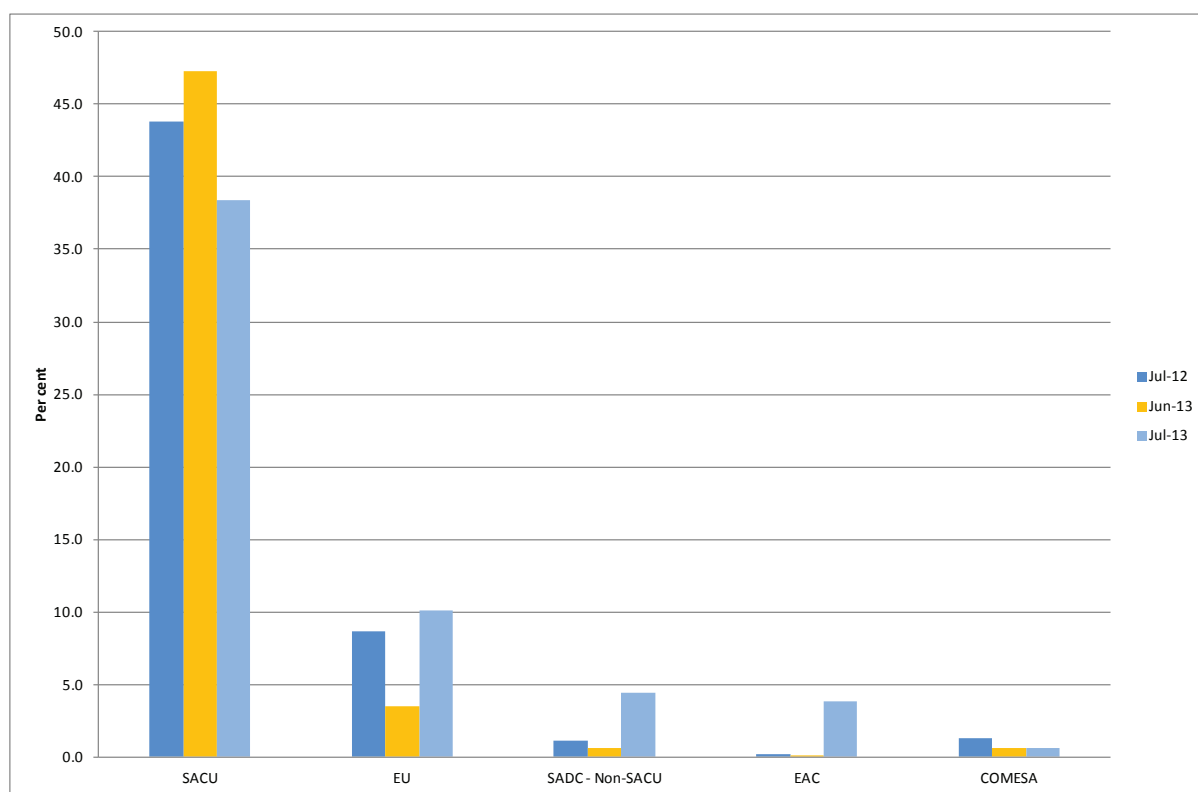


3.2 Import by economic blocs

During the month under review, Namibia mostly imported from SACU compared to other economic blocs. Imports from SACU amounted to N\$ 4.1 billion representing 67.0 per cent of the total share. Imports from EU followed with a total value of N\$ 1.1 billion representing 17.6 per cent, an increase of 326.1 percent compared to the last month and up by 53.7 per cent on annual basis.

Imports from the SADC excluding SACU countries occupied the third place with a share of 7.7 per cent, a significant increase of 939.6 percent compared to 1.2 percent in the previous month and 408.6 percent increase when compared to the same month of the preceding year. Chart 3 shows a comparison of Namibia's imports from different economic blocs.

Chart 3 Import by economic blocs



4. TRADE BY MODE OF TRANSPORT

4.1 Exports by mode of transport

Air transport accounted for 36.9 percent of total exports conveyed, up from 33.2 percent in the previous month and 22.9 percent in the same month in 2012.

Sea transport accounted for 31.5 percent of total exports transported in the period under review up from 30.5 percent in the previous month and down from 47.2 percent when compared with the same month in 2012.

Road transport was on par with sea transport, accounting for 31.5 percent of total exports transported in July 2013. It was however down from 36.2 percent one month earlier and up from 29.8 percent recorded in the same month of the preceding year.

Table 5 Exports by mode of transports

Mode of transport	Export values (N\$ m)						
	Jul-12		Jun-13		Jul-13		% change July 2012/13
Air	945	22.9	1,404	33.2	1,785	36.9	89.0
Sea	1,944	47.2	1,291	30.5	1,525	31.5	-21.6
Road	1,226	29.8	1,533	36.2	1,522	31.5	24.1
Total	4,116	100.0	4,234	100.0	4,837	100.0	17.5

4.2 Imports by mode of transport

Road transport accounted for 54.1 percent of total imports transported in July 2013 down from 75.8 percent one month earlier and 62.6 percent recorded in the corresponding month of the preceding year.

Sea transport accounted for 38.7 percent of total imports transported in the period under review up from 13.8 percent in the previous month and 30.9 in the same month of the preceding year.

Air transport accounted for 6.3 percent of total imports transported, down from 9.4 percent in the previous month and 5.3 percent in the corresponding period of 2012.

Rail transport accounted for 0.7 percent of total imports transported, down from 0.8 percent in the previous month and 1.2 percent in the corresponding period of 2012.

Table 6 Imports by mode of transports

Mode of transport	Import values (N\$ m)						
	Jul-12		Jun-13		Jul-13		% change July 2012/13
Road	3,029	62.6	3,392	75.8	3,576	54.1	18.1
Sea	1,495	30.9	616	13.8	2,555	38.7	71.0
Air	255	5.3	422	9.4	417	6.3	63.7
Rail	59	1.2	34	0.8	43	0.7	-26.8
Total	4,838	100.0	4,475	100.0	6,609	100.0	36.6

5. CONCLUSION

During the month of July 2013, Namibia's total exports amounted to N\$4.8 billion, while imports amounted to N\$6.6 billion resulting into a trade deficit of N\$1.8 billion.

Major exported commodities were: precious stone (diamonds etc.); fish; ores, slag and ash; zinc and vehicles. Major imports were: minerals fuels and mineral oils; vehicles; ships, boats and floating structures; boilers, machinery and mechanical appliances and electrical machinery and equipment.

During the period under review, Namibia's key export markets were Botswana, South Africa, Angola, Switzerland and United States of America while the key import markets were South Africa, Denmark and Tanzania.

In terms of economic blocks, Namibia continued to trade mostly with the SACU, EU, and SADC Non-SACU countries.

6. LIST OF TERMS AND DEFINITIONS

Export Processing Zone (EPZ): An Export Processing Zone (EPZ) is a Customs area where one is allowed to import machinery, equipment and material for the manufacture of export goods under security, without payment of duty. The imported goods are subject to customs control at importation, through the manufacturing process, to the time of sale/export, or duty payment for home consumption.

Trade Balance: The commercial balance or net exports (sometimes symbolized as NX), is the difference between the monetary value of exports and imports of output in an economy over a certain period.

Trade Deficit: Is an economic measure of a negative trade balance in which a country's imports exceeds its exports.

Trade Surplus: Is an economic measure of a positive trade balance in which a country's exports exceeds its imports.

7. APPENDIX

6.1 Export products to key markets

HS code and Description	SOUTH AFRICA					
	Jul-12		Jun-13		Jul-13	
	Value (N\$)	Share	Value (N\$)	Share	Value (N\$)	Share
87:Vehicles	568	16.1	585	18.4	699	17.6
27:Mineral fuels (fuels and oils)	644	18.2	110	3.4	581	14.6
84:Boilers, machinery and mechanical appliances	334	9.5	365	11.5	333	8.4
85:Electrical machinery and equipment	181	5.1	202	6.3	239	6.0
73:Articles of iron or steel	148	4.2	169	5.3	198	5.0
Other products	1,659	46.9	1,753	55.1	1,930	48.5
Total	3,534	100.0	3,183	100.0	3,980	100.0
HS code and Description	DENMARK					
	Jul-12		Jun-13		Jul-13	
	Value (N\$)	Share	Value (N\$)	Share	Value (N\$)	Share
89:Ships, Boats and Floating structures	-	-	-	-	526	97.9
84:Boilers, machinery and mechanical appliances	1	13.5	1	10.3	6	1.0
11:Products of the milling industry; malt; starches; inulin; wheat gluten	2	38.6	5	59.5	2	0.4
02:Meat	1	14.5	0	1.7	2	0.4
Other products	2	33.0	2	23.9	1	0.2
Total	5	100.0	8	100.0	537	100.0
HS code and Description	TANZANIA					
	Jul-12		Jun-13		Jul-13	
	Value (N\$)	Share	Value (N\$)	Share	Value (N\$)	Share
27:Mineral fuels (fuels and oils)	-	-	-	-	409	100.0
Total	13	100.0	2	100.0	409	100.0
HS code and Description	CHINA					
	Jul-12		Jun-13		Jul-13	
	Value (N\$)	Share	Value (N\$)	Share	Value (N\$)	Share
85:Electrical machinery and equipment	37	28.8	12	9.0	135	53.2
28:Inorganic chemicals; organic or inorganic compounds	31	23.8	38	28.0	46	18.1
72:Iron and Steel	1	1.1	14	10.1	16	6.3
84:Boilers, machinery and mechanical appliances	12	9.6	11	8.1	15	5.8
94:Furnitures	4	3.2	3	2.3	5	2.1
Other products	43	33.5	57	42.5	37	14.4
Total	128	100.0	134	100.0	253	100.0
HS code and Description	ITALY					
	Jul-12		Jun-13		Jul-13	
	Value (N\$)	Share	Value (N\$)	Share	Value (N\$)	Share
27:Mineral fuels (fuels and oils)	-	-	-	-	216	96.9
84: boilers, machinery and mechanical appliances	2	32.6	9	46.5	3	1.2
94:Furnitures	0	3.3	0	2.5	1	0.3
90:Optical, photographic, cinematographic	0	4.3	0	0.4	1	0.3
38:Chemical products	-	-	1	6.9	1	0.2
Other products	3	59.8	9	43.7	2	1.1
Total	6	100.0	20	100.0	223	100.0

6.2 Import products from key markets

HS code and Description	BOTSWANA					
	Jul-12		Jun-13		Jul-13	
	Value (N\$)	Share	Value (N\$)	Share	Value (N\$)	Share
71:Precious stones (diamonds etc)	-	-	1,029	96.4	1,284	96.5
27:Mineral fuels (fuels and oils)	14	41.2	21	2.0	21	1.6
87:Vehicles	6	18.7	5	0.4	12	0.9
22:Beverages, sprits and vinegar	5	15.6	3	0.3	6	0.5
86:Railway or tramway locomotives	0	0.9	2	0.2	2	0.1
Other products	8	23.6	8	0.7	5	0.4
Total	34	100.0	1,067	100.0	1,330	100.0
HS code and Description	SOUTH AFRICA					
	Jul-12		Jun-13		Jul-13	
	Value (N\$)	Share	Value (N\$)	Share	Value (N\$)	Share
01:Live animals	57	9.1	99	15.7	106	15.3
71:Precious stones (diamonds etc)	43	6.8	70	11.1	83	11.9
84: Boilers, machinery and mechanical appliances	42	6.6	57	9.0	78	11.3
03:Fish	76	12.0	70	11.1	72	10.4
02:Meat	108	17.0	93	14.8	70	10.0
Other products	307	48.6	241	38.3	284	41.0
Total	632	100.0	630	100.0	693	100.0
HS code and Description	ANGOLA					
	Jul-12		Jun-13		Jul-13	
	Value (N\$)	Share	Value (N\$)	Share	Value (N\$)	Share
87:Vehicles	109	28.4	86	24.9	120	31.0
94:Furnitures	35	9.1	38	11.2	36	9.3
84:Boilers, machinery and mechanical appliances	28	7.4	25	7.4	31	7.9
85:Electrical machinery and equipment	31	8.0	20	5.8	29	7.6
03:Fish	27	7.0	27	7.8	19	4.9
Other products	154	40.1	148	42.9	153	39.3
Total	384	100.0	344	100.0	388	100.0
HS code and Description	SWITZERLAND					
	Jul-12		Jun-13		Jul-13	
	Value (N\$)	Share	Value (N\$)	Share	Value (N\$)	Share
79:Zinc and articles thereof	-	-	-	-	170	47.9
26:Ores, Slag and Ash	48	57.4	375	79.1	91	25.7
71:Precious stones (diamonds etc)	0	0.0	60	12.7	84	23.8
74:Copper and articles thereof	35	42.4	37	7.8	8	2.2
28:Inorganic chemicals; organic or inorganic compounds of precious metals	-	-	1	0.3	1	0.3
Other products	0	0.1	0	0.1	0	0.1
Total	83	100.0	474	100.0	354	100.0
HS code and Description	UNITED STATES OF AMERICA					
	Jul-12		Jun-13		Jul-13	
	Value (N\$)	Share	Value (N\$)	Share	Value (N\$)	Share
26:Ores, Slag and Ash	124	59.6	175	74.9	164	48.2
71:Precious stones (diamonds etc)	80	38.3	48	20.6	126	37.0
74:Copper and articles thereof	-	-	0	0.0	36	10.5
03:Fish	2	1.0	4	1.5	9	2.6
73:Articles of iron or steel	0	0.0	0	0.0	3	0.8
Other products	2	1.1	7	3.0	3	0.9
Total	208	100.0	234	100.0	340	100.0

6.3 Trade by office

Office	Value (N\$ m)											
	Jul-12				Jun-13				Jul-13			
	Export	Share	Import	Share	Export	Share	Import	Share	Export	Share	Import	Share
Ariamsvlei	225	5.5	983	20.3	310	7.3	1,084	24.2	256	5.3	1,245	18.8
Eros Airport	698	17.0	127	2.6	1,117	26.4	240	5.4	1,373	28.4	174	2.6
F. P. du Toit	0	0.0	171	3.5	-	-	165	3.7	-	-	190	2.9
Gobabis	-	-	1	0.0	-	-	0	0.0	-	-	0	0.0
Grootfontein	0	0.0	2	0.0	-	-	3	0.1	-	-	0	0.0
Chief Hosea Kutako Intl Airport	246	6.0	127	2.6	103	2.4	165	3.7	131	2.7	221	3.3
Impalila island	-	-	0	0.0	-	-	0	0.0	-	-	2	0.0
Katima Mulilo	13	0.3	1	0.0	12	0.3	0	0.0	17	0.3	0	0.0
Katwitwi	8	0.2	0	0.0	15	0.4	0	0.0	13	0.3	0	0.0
Keetmanshoop	0	0.0	3	0.1	-	-	6	0.1	-	-	4	0.1
Lüderitz	313	7.6	422	8.7	56	1.3	83	1.9	396	8.2	647	9.8
Klein Manase	0	0.0	0	0.0	-	-	0	0.0	-	-	1	0.0
Mohembo	2	0.1	11	0.2	1	0.0	13	0.3	1	0.0	12	0.2
Ngoma	8	0.2	10	0.2	13	0.3	17	0.4	56	1.2	23	0.3
Noordoewer	166	4.0	505	10.4	159	3.8	520	11.6	181	3.7	583	8.8
Omahenene	3	0.1	0	0.0	3	0.1	0	0.0	4	0.1	0	0.0
Ondangwa	0	0.0	6	0.1	-	-	3	0.1	-	-	1	0.0
Oranjemund	4	0.1	61	1.3	2	0.1	52	1.2	3	0.1	65	1.0
Oshakati	-	-	8	0.2	0	0.0	9	0.2	-	-	14	0.2
Oshikango	363	8.8	7	0.2	315	7.4	8	0.2	352	7.3	10	0.1
Otjiwarongo	0	0.0	1	0.0	-	-	3	0.1	-	-	2	0.0
Ruacana	5	0.1	-	-	0	0.0	-	-	0	0.0	-	-
Rundu	2	0.0	1	0.0	1	0.0	1	0.0	3	0.1	0	0.0
Swakopmund	0	0.0	4	0.1	0	0.0	0	0.0	0	0.0	1	0.0
Trans Kalahari	249	6.0	1,064	22.0	245	5.8	1,138	25.4	273	5.6	1,141	17.3
Tsumeb	0	0.0	1	0.0	1	0.0	3	0.1	0	0.0	8	0.1
Walvis Bay	1,640	39.9	1,160	24.0	1,250	29.5	574	12.8	1,143	23.6	1,952	29.5
Wenela	84	2.0	6	0.1	121	2.9	14	0.3	110	2.3	6	0.1
Windhoek Regional Warehouse Office	86	2.1	66	1.4	510	12.0	325	7.3	525	10.9	239	3.6
Windhoek Regional Office	0	0.0	58	1.2	0	0.0	28	0.6	0	0.0	42	0.6
Windhoek regional Excise Office	-	-	31	0.6	-	-	20	0.4	-	-	26	0.4
Total	4,116	100.0	4,838	100.0	4,234	100.0	4,475	100.0	4,837	100.0	6,609	100.0

6.4 Trade by fob value

Month	2012		2013	
	Exports	Imports	Exports	Imports
June	3,374	5,137	4,117	4,172
July	3,956	4,524	4,729	6,108

