

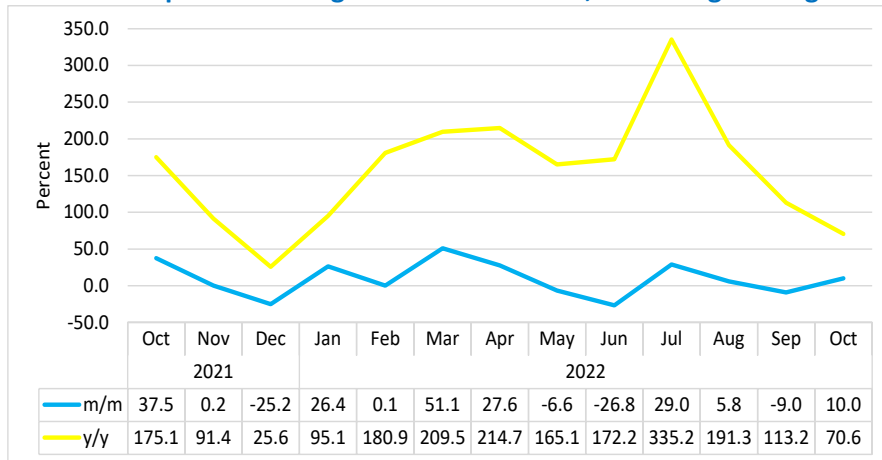


Travellers Arrivals & Departures Sectoral Report October 2022

Namibia Statistics Agency
P.O. Box 2133
FGI House, Post Street Mall
Windhoek Namibia

Tel: +264 61 431 3200
Fax: +264 61 431 3253
Email: info@nsa.org.na
www.nsa.org.na

Chart 1: Composite Passenger Movement Index, Percentage Changer

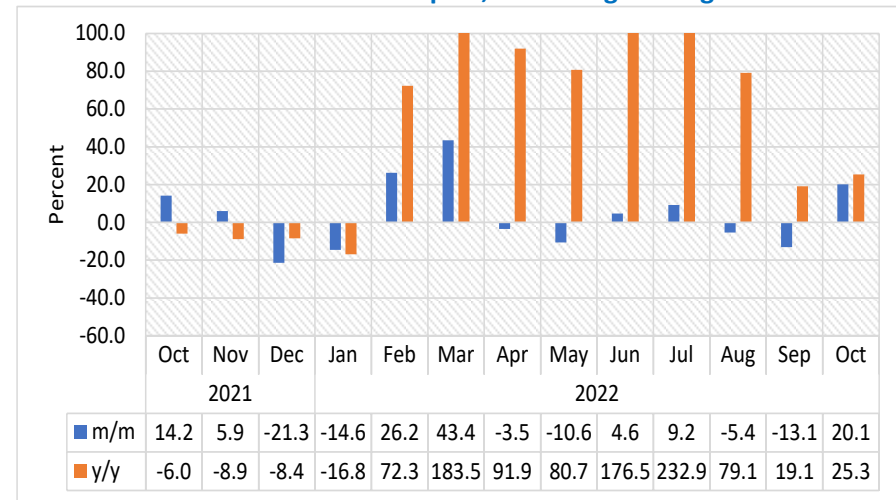


- The **Composite Passenger Movement Index** (consisting of regional, international, and domestic arrivals and departures of passengers at airports) rebounded monthly recording an increase of 10.0 percent in October 2022, upward from a reduction of 9.0 percent registered in the preceding month. Moreover, the index recorded a slower increase of 70.6 percent year on year (Chart 1).
- The improvement registered monthly was mainly observed from increases in the movement of passengers via Hosea Kutako, Walvis Bay and Eros airports. However, other airports namely, Rundu and Katima Mulilo registered increases in passenger movements.
- In absolute terms, a total of 84 900 passengers were recorded at airport terminals across the country during the review month, as opposed to 77 180 passengers registered in September 2022. Arrival

¹ This graph is limited to -60 percent and 100 percent for better presentation.

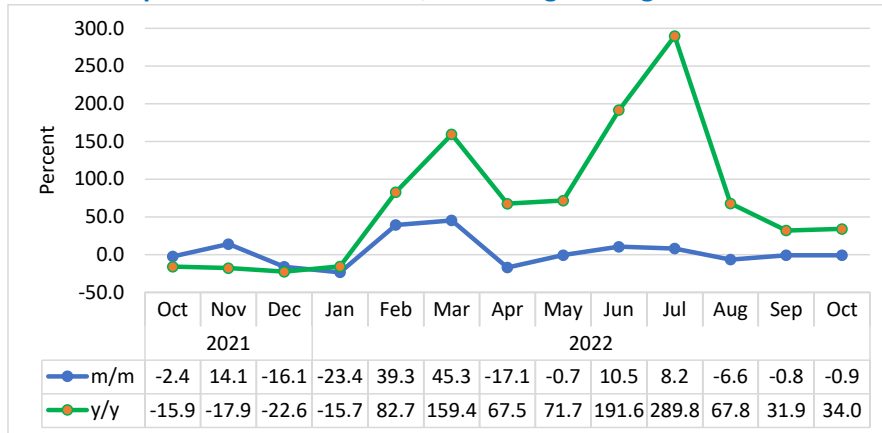
passengers stood at 43 737 compared to 26 282 passengers that were recorded a year earlier.

Chart 2: Arrivals Index for Eros Airport, Percentage Change¹



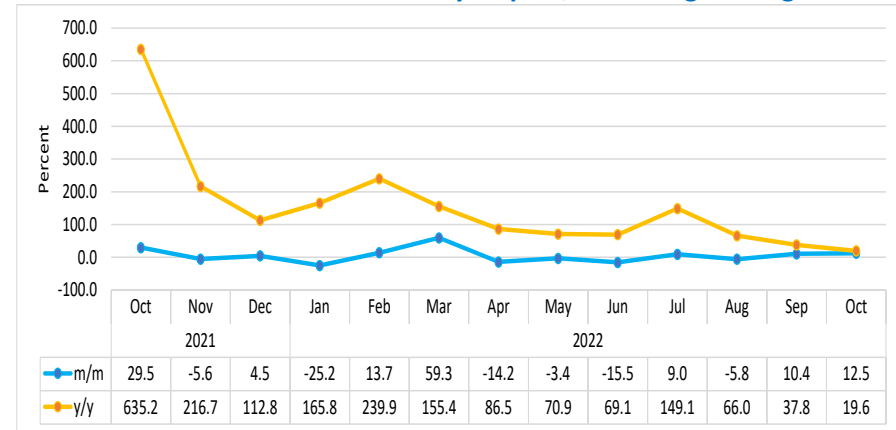
- The **Arrivals Index for Eros Airport** (Chart 2) increased by 20.1 percent monthly in October 2022, in contrast to a reduction of 13.1 percent recorded in the previous month. Moreover, the index registered an increase of 25.3 percent year on year.
- The number of passengers that arrived in October 2022 via Eros Airport increased to 3 595 passengers, in contrast to 2 993 passengers registered in the preceding month of 2022, while arrival increased when compared to 2 869 passengers registered in October 2021.

Chart 3: Departures Index for Eros, Percentage Change



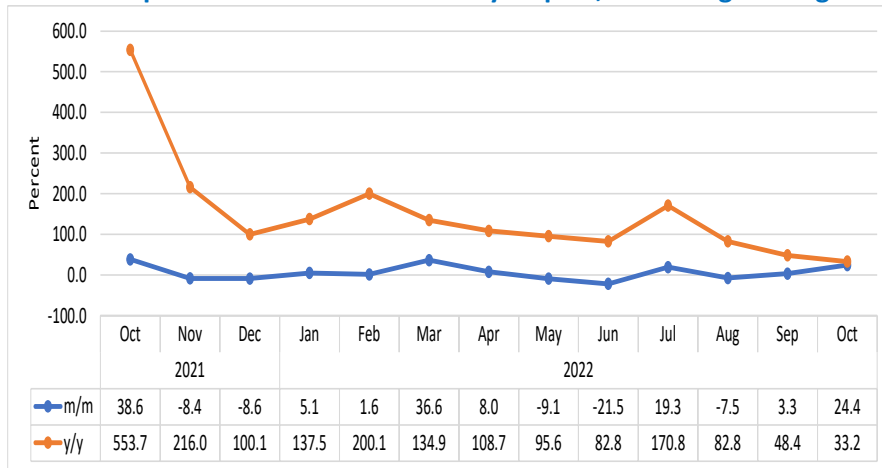
- The Index for **departures for Eros Airport** (Chart 3) declined by a margin of 0.9 percent month on month, in October 2022, when compared to a marginal reduction of 0.8 percent recorded in the preceding month.
- The number of passengers that departed through Eros Airport in October 2022 stood at 3 339 passengers, upward from 2 491 passengers registered in the corresponding month of 2021.

Chart 4: Arrivals Index for Walvis Bay Airport, Percentage Change



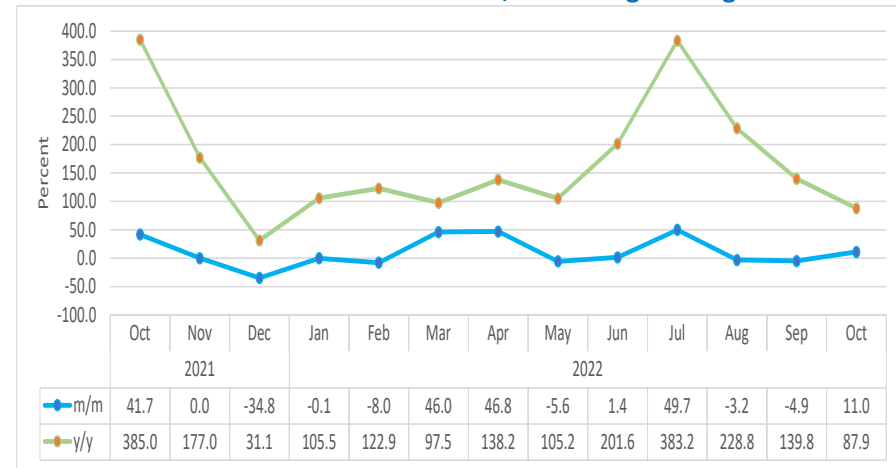
- The **Arrivals** Index for **Walvis Bay Airport** (Chart 4) increased monthly, recording a growth of 12.5 percent in October 2022, an improvement when compared to a growth of 10.4 percent posted a month earlier. Annually, the index increased by 19.6 percent.
- In absolute terms, a total number of 3 070 passengers arrived in October 2022 via Walvis Bay airport, upward from 2 566 passengers registered in the corresponding month of 2021.

Chart 5: Departures Index for Walvis Bay Airport, Percentage Change



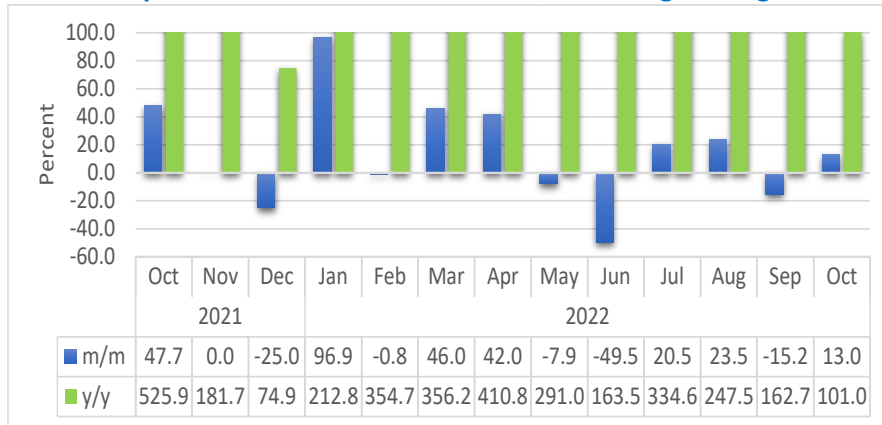
- The Index for **Departures for Walvis Bay Airport** (Chart 5) increased monthly by 24.4 percent in October 2022, compared to a growth of 3.3 percent registered in the previous month.
- In absolute terms, the number of passengers that departed via Walvis Bay airport in October 2022 increased, registering 3 388 passengers upward from 2 543 passengers recorded in the corresponding month of 2021.

Chart 6: Arrivals Index for Hosea Kutako, Percentage Change



- The **Arrivals** Index for **Hosea Kutako Airport** (Chart 6) increased on a monthly basis, recording a growth of 11.0 percent in October 2022, in contrast to reduction of 4.9 percent posted a month earlier. Annually, the index increased by 87.9 percent.
- During October 2022, the number of passengers that arrived via Hosea Kutako Airport increased to 35 698, compared to 32 164 passengers recorded in September 2022, while the number of passengers increased when compared to 18 999 passengers recorded in the corresponding month of 2021.

Chart 7: Departures Index for Hosea Kutako, Percentage Change ²



- The **Departures Index for Hosea Kutako Airport** (Chart 7) increased monthly by 13.0 percent in October 2022, in contrast to a deterioration of 15.2 percent registered in the previous month.
- In absolute terms, the number of passengers that departed via Hosea Kutako airport increased to 33 028 in October 2022, compared to 29 217 passengers in September 2022 and 16 429 passengers registered in the corresponding month of 2021.

² This graph is limited to -60 percent and 100 percent for better presentation.

Table 1: The indices of international arrivals and departures

| Year | Month | Total Airports | Index for Arrivals (Regional & International) | Index for Departures (Regional & International) |
|------|-------|----------------|---|---|
| 2019 | Jan | 107.8 | 105.8 | 109.8 |
| | Feb | 103.3 | 103.6 | 103.0 |
| | Mar | 128.1 | 129.6 | 126.5 |
| | Apr | 130.4 | 130.0 | 130.8 |
| | May | 123.7 | 121.9 | 125.4 |
| | Jun | 107.7 | 110.7 | 104.5 |
| | Jul | 122.6 | 130.9 | 114.1 |
| | Aug | 143.1 | 138.3 | 147.9 |
| | Sep | 128.0 | 132.7 | 123.3 |
| | Oct | 129.7 | 129.6 | 129.7 |
| | Nov | 120.3 | 114.8 | 125.9 |
| | Dec | 109.3 | 111.5 | 107.0 |
| 2020 | Jan | 98.2 | 94.8 | 101.6 |
| | Feb | 92.4 | 92.6 | 92.2 |
| | Mar | 60.6 | 57.1 | 64.1 |
| | Apr | 2.0 | 1.1 | 3.0 |
| | May | 8.2 | 8.2 | 8.1 |
| | Jun | 9.4 | 9.1 | 9.7 |
| | Jul | 12.0 | 11.3 | 12.7 |
| | Aug | 7.8 | 7.7 | 8.0 |
| | Sep | 7.8 | 7.3 | 8.2 |
| | Oct | 21.2 | 22.8 | 19.6 |
| | Nov | 30.5 | 32.3 | 28.7 |
| | Dec | 34.8 | 37.3 | 32.2 |

Table 1: The indices of international arrivals and departures continue...

| Year | Month | Total Airports | Index for Arrivals (Regional & International) | Index for Departures (Regional & International) |
|------|-------|----------------|---|---|
| 2021 | Jan | 28.3 | 26.0 | 30.7 |
| | Feb | 19.7 | 19.2 | 20.1 |
| | Mar | 27.0 | 27.5 | 26.5 |
| | Apr | 33.9 | 34.2 | 33.5 |
| | May | 37.5 | 36.8 | 38.3 |
| | Jun | 26.8 | 25.6 | 28.0 |
| | Jul | 21.6 | 22.6 | 20.6 |
| | Aug | 34.1 | 34.1 | 34.2 |
| | Sep | 42.4 | 44.8 | 40.0 |
| | Oct | 58.3 | 61.2 | 55.4 |
| | Nov | 58.4 | 61.4 | 55.4 |
| | Dec | 43.7 | 44.3 | 43.1 |
| 2022 | Jan | 55.2 | 41.1 | 69.4 |
| | Feb | 55.3 | 40.2 | 70.4 |
| | Mar | 83.5 | 61.8 | 105.5 |
| | Apr | 106.6 | 76.3 | 137.2 |
| | May | 99.5 | 72.1 | 127.3 |
| | Jun | 72.9 | 72.8 | 73.0 |
| | Jul | 94.0 | 101.4 | 86.5 |
| | Aug | 99.4 | 98.0 | 100.8 |
| | Sep | 90.4 | 93.0 | 87.8 |
| | Oct | 99.5 | 101.9 | 97.1 |

Methodology

- Background:** The information in this report looks at both citizen and non-citizen travelers' arrivals and departures.
- Data sources:** Namibia Airports Company
- Base year:** The volumes have been referenced to 2015 data as of November 2019
- Conversion:** 1 basis point = 0.01 percent