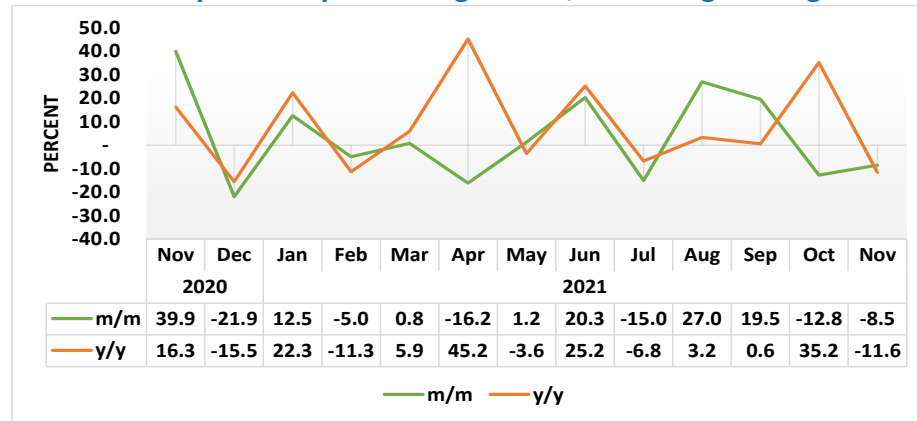




Transport Sectoral Report

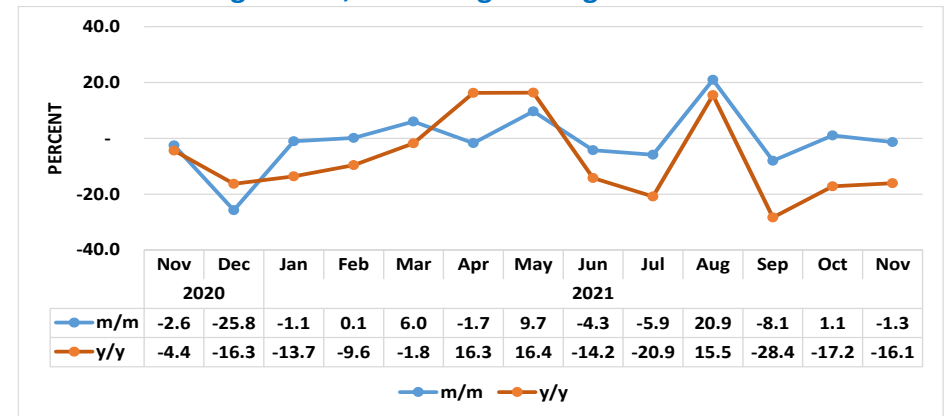
November 2021

Chart 1: Transport Composite Cargo Index, Percentage Change



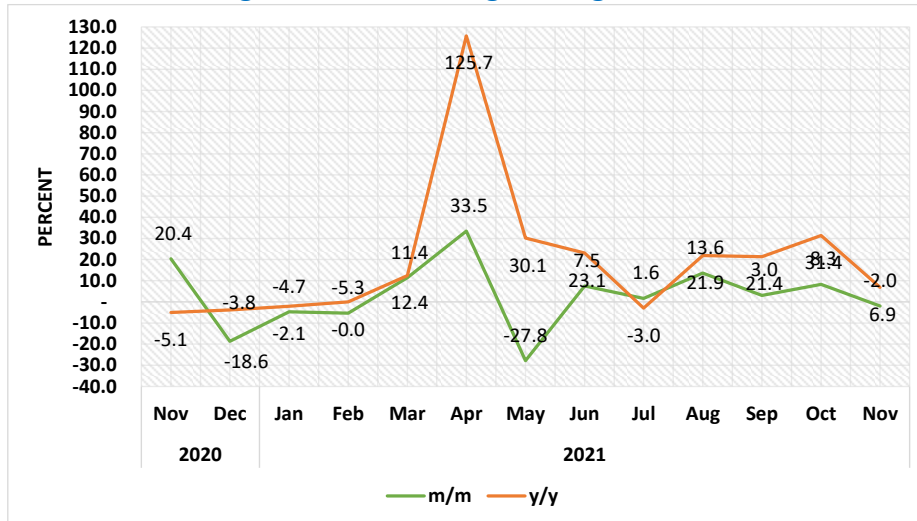
- The **Transport Composite Cargo Index** that consists of Rail, Road, Air and Sea Cargo recorded a decline on a monthly basis by 8.5 percent in November 2021 compared to a reduction of 12.8 percent registered in October 2021. Furthermore, the index recorded a decline of 11.6 percent, year on year.
- The decline recorded on monthly basis emanates mainly from low volumes of cargo for consignments of exports and imports transported during November 2021 via sea that amounted to 500 991 tonnes of goods.

Chart 2: Rail Cargo Index, Percentage Change



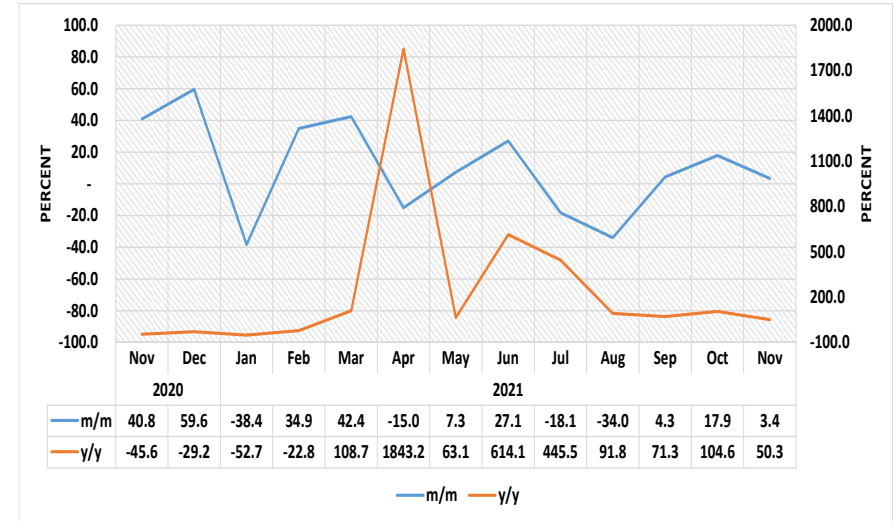
- The **Rail Cargo Index** (Chart 2) for November 2021 declined by 1.3 percent month on month compared to a growth of 1.1 percent registered in October 2021. Furthermore, the Rail Cargo Index declined by 16.1 percent year on year worse off when compared to a reduction of 4.4 percent recorded in the corresponding month of 2020.
- The decline recorded on monthly basis is mainly attributed to low volume of cargo for copper concentrate and manganese ore transported via rail. For the month under review, a total 122 938 tonnes of goods were transported via rail cargo.

Chart 3: Road Cargo Index, Percentage Change



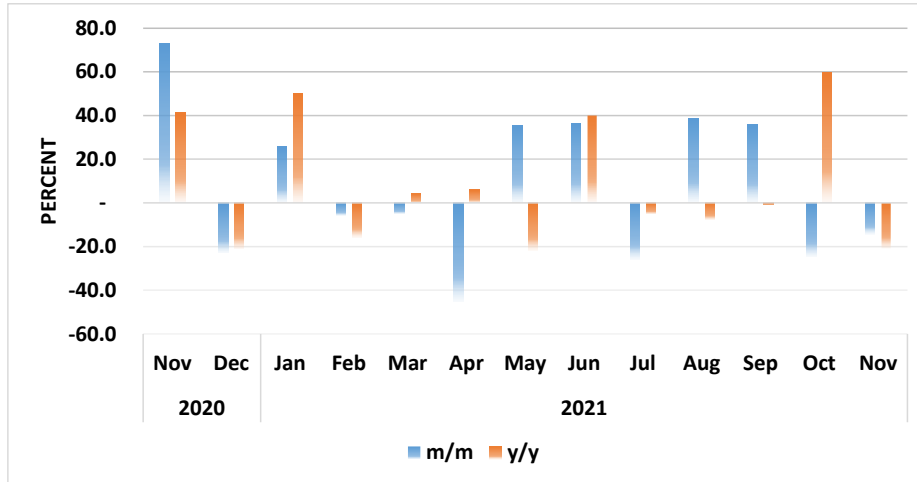
- The **Road Cargo Index** (Chart 3) declined monthly posting a reduction of 2.0 percent in November 2021 lower than a growth of 8.3 percent recorded in October 2021. On annual basis the index increased registering a slow growth of 6.9 percent.
- The decline recorded on monthly basis is mainly attributed to low volumes of predominantly live poultry, dried vegetables, olive oils, frozen fish, petroleum oils, milk and cream. For the month under review, 379 542 tonnes of goods were transported via road.

Chart 4: Air Cargo Index, Percentage Change



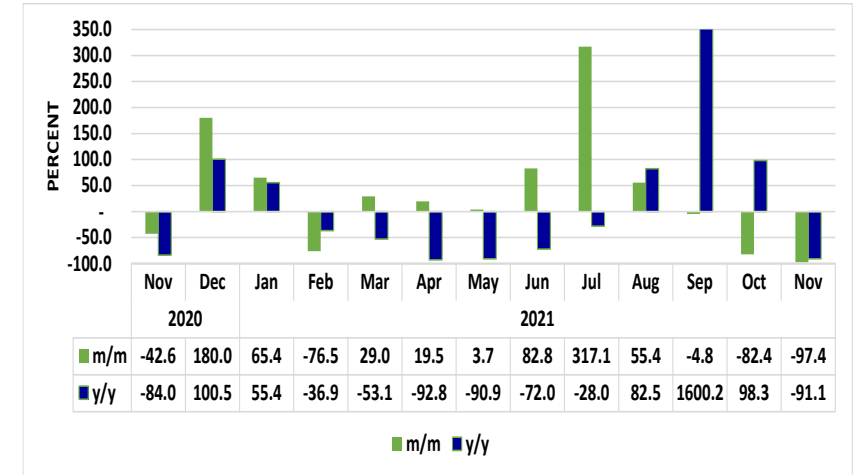
- The **Air Cargo Index** (Chart 4) registered a monthly increase of 3.4 percent in November 2021. However, this indicated a slow growth when compared to a growth of 17.9 percent registered in October 2021. Furthermore, on an annual basis, the index went up by 50.3 percent from a reduction of 45.6 percent recorded in the corresponding period of 2020.
- The increase recorded on monthly basis were mainly reflected on high volume of consignments that amounted to 463 tonnes. The consignments were mainly for medical appliances, electrical apparatus, processing machines, purifying machinery, fresh fish, seed and fruits transported via air cargo.

Chart 5: Sea Cargo Index, Percentage Change



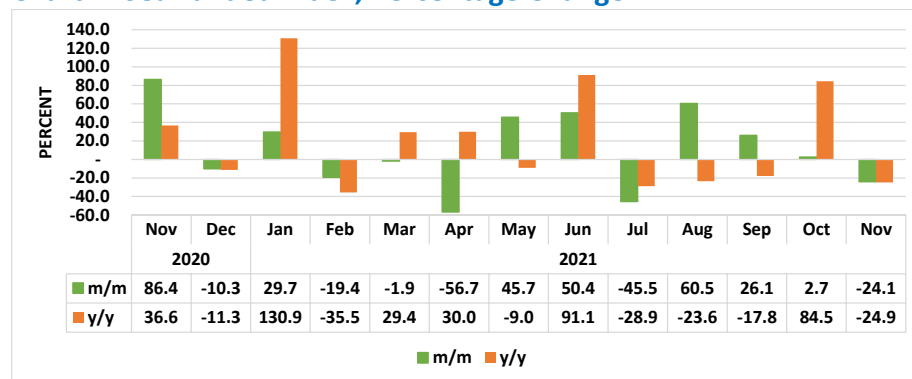
- The **Sea Cargo Index** (Chart 5) that consists of Sea-landed, Sea-Shipped and Sea Trans-shipped registered a decline of 14.3 percent month on month, upward from a deterioration of 24.7 percent recorded in October 2021. Similarly, the index declined on annual basis by registering a reduction of 20.9 percent.
- The monthly decline recorded in the Sea Cargo Index is mainly attributed to Sea-transhipped and Sea-landed that recorded reductions of 97.4 and 24.1 percent, respectively.

Chart 6: Sea Trans Shipped Index, Percentage Change



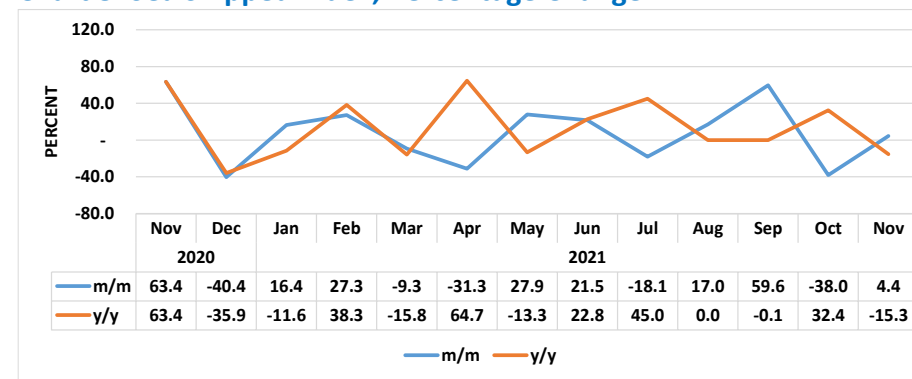
- The **Sea Trans Shipped Index** (Chart 6) declined on a monthly basis, registering a massive deterioration of 97.4 percent during the month under review, further downward from a reduction of 82.4 percent that was recorded in October 2021.
- The decline recorded on monthly basis is mainly reflected in the low volume of trans-shipments of frozen fish and general items that were trans-shipped through the port of Walvis Bay.
- A total of only 314 tonnes were transhipped by sea during the month of November 2021 when compared to 12 247 tonnes and 3 546 tonnes in October 2021 and November 2020, respectively.

Chart 7: Sea Landed Index, Percentage Change



- **The Sea Landed Index** (Chart 7) declined by 24.1 percent on monthly basis during November 2021. This is worse-off, when compared to a growth of 2.7 percent recorded in the previous month. Over the year, the index reduced by 24.9 percent from a growth of 36.6 percent recorded in the corresponding period of 2020.
- The decline registered on monthly basis was mainly accredited to the low volumes of landed frozen fish, petroleum, vehicles on own wheels and spare parts imported through the port of Walvis Bay and Luderitz, respectively.
- A total of 257 163 tonnes were landed by sea during the month of November 2021 when compared to 339 013 tonnes and 342 464 tonnes in October 2021 and November 2020, respectively.

Chart 8: Sea Shipped Index, Percentage Change



- The **Sea Shipped Index** (Chart 8) for November 2021 increased by 4.4 percent month on month, upward from a deterioration of 38.0 percent recorded in the preceding month. However, on a yearly basis, the Sea Shipped Index declined, registering a reduction of 15.3 percent worse-off when compared to a growth of 63.4 percent recorded during the same period in 2020.
- The increase recorded on a monthly basis mainly emerged from high volume of frozen fish, salt and manganese ore exports shipped in bulk through the ports of Walvis Bay and Luderitz, respectively. A total of 243 513 tonnes were shipped by sea during the month of November 2021.
- The total volume of cargo transported by sea in November 2021 amounted to 500 991 tonnes compared to 584 453 tonnes recorded in the preceding month. Whereas, the total volume of cargo transported by sea for November 2020 stood at 633 672 tonnes.
- During the month of November 2021, Namibia transported 1 003 933 tonnes of cargo (through Rail, Road, Air and Sea), compared to 1 096 841 tonnes and 1 135 602 tonnes that were transported in October 2021 and the corresponding period of 2020, respectively.

Table 1: Cargo by mode of transport in tonnes

Year	Month	Rail cargo	Road cargo	Air cargo	Sea Landed	Sea Shipped	Sea Trans-shipped
2018	Jan	124,052	218,646	861	374,413	187,977	34,150
	Feb	108,727	236,009	609	233,925	199,606	22,073
	Mar	98,848	317,118	587	388,880	141,491	27,239
	Apr	113,416	235,798	592	144,460	112,868	10,854
	May	100,151	302,863	564	218,097	180,542	23,582
	Jun	118,956	243,788	598	320,130	168,048	22,095
	Jul	127,584	263,830	710	250,551	148,565	11,299
	Aug	162,308	274,970	805	357,105	168,120	10,711
	Sep	109,458	283,016	636	408,833	168,553	11,935
	Oct	159,069	308,614	393	326,174	124,195	11,987
	Nov	153,398	312,839	517	339,922	234,252	18,227
	Dec	105,608	321,578	602	186,495	157,301	2,596
2019	Jan	125,512	230,550	483	315,337	208,347	16,286
	Feb	121,870	244,618	566	350,383	142,149	24,124
	Mar	136,119	272,290	503	568,785	195,844	5,217
	Apr	147,746	305,766	672	106,737	135,080	10,027
	May	149,901	307,518	707	235,089	162,965	15,143
	Jun	140,177	327,346	585	293,723	161,821	13,734
	Jul	155,823	362,757	617	290,805	120,255	4,301
	Aug	134,679	350,945	675	290,838	216,371	4,302
	Sep	143,888	336,968	583	298,567	122,366	2,611
	Oct	128,491	425,822	419	207,311	169,748	7,555
	Nov	153,331	374,019	567	250,639	176,039	22,143
	Dec	130,022	300,383	694	346,415	267,614	4,953
2020	Jan	124,661	281,305	641	172,554	225,880	10,570
	Feb	119,235	260,778	530	498,254	183,758	6,126
	Mar	116,267	258,529	279	243,494	273,582	10,633
	Apr	96,506	171,759	25	104,862	96,192	82,393
	May	105,771	215,121	325	218,352	233,748	67,622
	Jun	137,334	244,530	94	156,370	200,474	40,337
	Jul	140,141	315,101	101	229,253	139,011	65,397
	Aug	116,133	285,009	190	342,226	235,835	40,068
	Sep	172,107	294,764	222	401,518	376,935	4,095
	Oct	150,408	294,890	219	183,762	176,081	6,175
	Nov	146,555	355,067	308	342,464	287,662	3,546
	Dec	108,787	288,974	492	307,274	171,471	9,929

Table 1: cont....

Year	Month	Rail cargo	Road cargo	Air cargo	Sea Landed	Sea Shipped	Sea Trans-shipped
2021	Jan	107,641	275,398	303	398,439	199,624	16,420
	Feb	107,757	260,740	409	321,256	254,083	3,863
	Mar	114,211	290,517	582	315,040	230,399	4,986
	Apr	112,231	387,713	494	136,333	158,391	5,956
	May	123,098	279,922	530	198,667	202,549	6,174
	Jun	117,829	300,999	674	298,812	246,107	11,287
	Jul	110,889	305,752	552	162,996	201,612	47,081
	Aug	134,100	347,315	364	261,617	235,889	73,143
	Sep	123,279	357,723	380	329,971	376,386	69,625
	Oct	124,581	387,360	448	339,013	233,193	12,247
	Nov	122,938	379,542	463	257,163	243,513	314

Table 2: Cargo Index

Year	Month	Rail cargo Index	Road cargo Index	Air cargo Index	Sea Landed	Sea Shipped	Sea Trans shipped	Total Sea Cargo Index	Composite Cargo Index
2018	Jan	96.8	77.3	170.5	123.6	183.8	48.5	125.5	106.0
	Feb	84.8	83.4	120.7	77.3	195.2	31.4	95.8	90.3
	Mar	77.1	112.1	116.3	128.4	138.3	38.7	117.3	109.8
	Apr	88.5	83.4	117.4	47.7	110.4	15.4	56.4	69.7
	May	78.1	107.1	111.7	72.0	176.5	33.5	88.8	93.1
	Jun	92.8	86.2	118.6	105.7	164.3	31.4	107.3	98.5
	Jul	99.5	93.3	140.7	82.7	145.3	16.1	86.3	90.5
	Aug	126.6	97.2	159.5	117.9	164.4	15.2	112.7	109.8
	Sep	85.4	100.0	125.9	135.0	164.8	17.0	124.0	110.8
	Oct	124.1	109.1	77.8	107.7	121.4	17.0	97.2	104.9
	Nov	119.7	110.6	102.3	112.3	229.0	25.9	124.6	119.4
	Dec	82.4	113.7	119.2	61.6	153.8	3.7	72.9	87.3
2019	Jan	97.9	81.5	95.7	104.1	203.7	23.1	113.6	101.1
	Feb	95.1	86.5	112.1	115.7	139.0	34.3	108.7	99.6
	Mar	106.2	96.3	99.6	187.8	191.5	7.4	161.9	132.9
	Apr	115.3	108.1	133.2	35.2	132.1	14.3	53.0	79.6
	May	117.0	108.7	140.0	77.6	159.3	21.5	86.9	98.2
	Jun	109.4	115.7	115.9	97.0	158.2	19.5	98.7	105.7
	Jul	121.6	128.2	122.2	96.0	117.6	6.1	87.4	105.4
	Aug	105.1	124.1	133.7	96.0	211.6	6.1	107.6	112.5
	Sep	112.3	119.1	115.6	98.6	119.6	3.7	89.1	102.0
	Oct	100.3	150.5	82.9	68.5	166.0	10.7	80.9	105.9
	Nov	119.6	132.2	112.3	82.8	172.1	31.5	94.4	110.1
	Dec	101.4	106.2	137.5	114.4	261.7	7.0	130.2	118.4
2020	Jan	97.3	99.4	127.0	57.0	220.9	15.0	86.0	92.0
	Feb	93.0	92.2	104.9	164.5	179.7	8.7	144.7	120.5
	Mar	90.7	91.4	55.2	80.4	267.5	15.1	111.0	101.8
	Apr	75.3	60.7	5.0	34.6	94.1	117.1	59.6	62.2
	May	82.5	76.0	64.4	72.1	228.6	96.1	109.3	94.8
	Jun	107.2	86.4	18.7	51.6	196.0	57.3	83.5	87.8
	Jul	109.3	111.4	20.0	75.7	135.9	92.9	91.2	100.2
	Aug	90.6	100.8	37.6	113.0	230.6	56.9	130.0	114.9
	Sep	134.3	104.2	43.9	132.6	368.6	5.8	164.6	140.9
	Oct	117.4	104.2	43.3	60.7	172.2	8.8	77.0	91.5
	Nov	114.3	125.5	61.0	113.1	281.3	5.0	133.3	128.0
	Dec	84.9	102.2	97.4	101.5	167.7	14.1	102.8	100.0

Table 2: Cargo Index continue.....

Year	Month	Rail cargo Index	Road cargo Index	Air cargo Index	Sea Landed	Sea Shipped	Sea Trans shipped	Total Sea Cargo Index	Composite Cargo Index
2021	Jan	84.0	97.4	60.0	131.6	195.2	23.3	129.2	112.5
	Feb	84.1	92.2	81.0	106.1	248.4	5.5	121.8	106.9
	Mar	89.1	102.7	115.3	104.0	225.3	7.1	115.8	107.8
	Apr	87.6	137.1	98.0	45.0	154.9	8.5	63.2	90.3
	May	96.0	99.0	105.1	65.6	198.0	8.8	85.7	91.4
	Jun	91.9	106.4	133.5	98.7	240.6	16.0	117.0	110.0
	Jul	86.5	108.1	109.3	53.8	197.1	66.9	86.6	93.4
	Aug	104.6	122.8	72.1	86.4	230.6	103.9	120.0	118.7
	Sep	96.2	126.5	75.2	109.0	368.0	98.9	163.2	141.8
	Oct	97.2	136.9	88.7	112.0	228.0	17.4	122.9	123.7
	Nov	95.9	134.2	91.7	84.9	238.1	0.4	105.4	113.2

Methodology

- Data source** : The data sources for volume of rail cargo are sourced from Trans-Namib while road and air cargo volume data are sourced from the Namibia Statistics Agency (Trade Statistics Sub-division). Volumes of Sea cargo, which comprises of sea-landed, sea-shipped and sea Trans-shipped, are sourced from Namport.
- Index calculation** : The index of cargo has been weighted using the volume data in tonnes for 2015.
- Conversion** : 1 basis point = 0.01 percent