

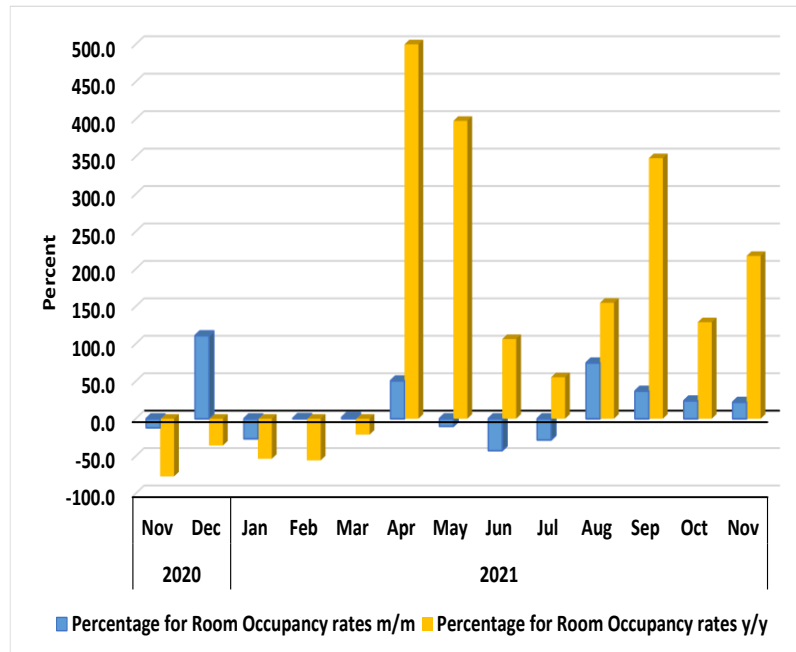


# Rooms and Beds Occupancy Sectoral Report November 2021

---

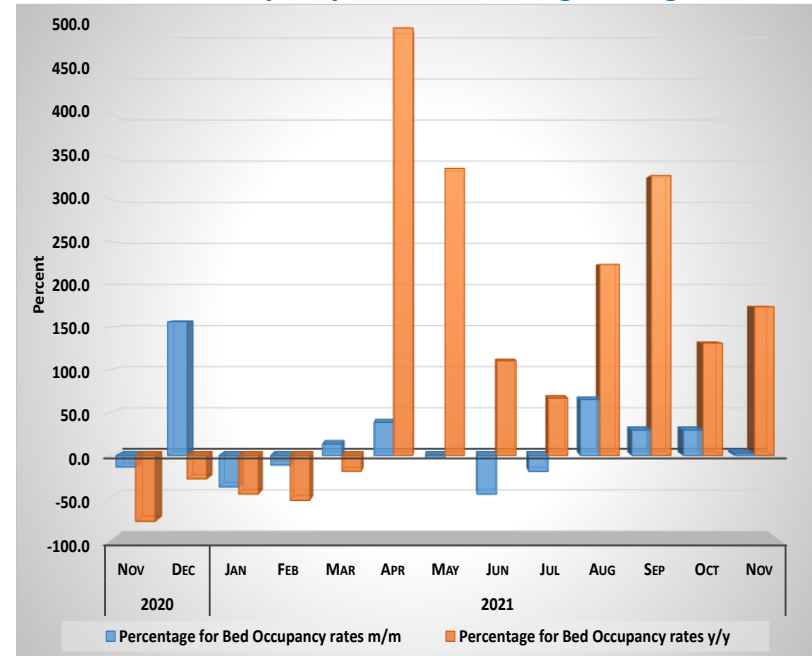
**Note: Some graphs has been limited for better readability (Chart1 & Chart2)**

**Chart 1: Rooms Occupancy Index, Percentage Change**



- The **Index for Rooms' Occupancy rate** (Chart 1) increased by 20.0 percent in November 2021 on monthly basis. This is a slowdown from a growth of 23.8 percent recorded a month earlier. However, the index increased significantly on an annual basis recording a huge growth rate of 217.4 percent.
- The slow growth registered on monthly basis was mainly due to the recent ban on travellers from abroad associated with the suspicious emergence of Omicron risk for Covid-19 infections into the tourism sector.

**Chart 2: Beds Occupancy Index, Percentage Change**



- The **Index for Beds' Occupancy rate** (Chart 2) registered an increase of 2.4 percent in November 2021 on monthly basis. However, this is a reverse back when compared to a growth of 29.5 percent recorded in a preceding month. On yearly basis, the index increased by 173.9 percent.
- The traveller's entry restrictions currently being imposed globally is slowly but surely being felt in the sector, hence a slow growth observed on monthly basis.

**Note: Some graphs has been limited for better readability (Chart1 & Chart2)**

Table 1: The indices of beds and rooms occupancy

Year	Month	Index for Room Occupancy rates	Index for Bed Occupancy rates
2015	Jan	71.5	77.9
	Feb	89.0	87.8
	Mar	92.3	88.1
	Apr	101.6	108.7
	May	105.5	99.3
	Jun	84.1	82.4
	Jul	106.4	114.7
	Aug	110.0	124.1
	Sep	109.4	110.5
	Oct	119.7	117.6
	Nov	123.7	105.7
	Dec	86.8	83.2
2016	Jan	79.3	87.4
	Feb	98.6	91.8
	Mar	107.0	107.2
	Apr	97.7	93.7
	May	106.2	109.2
	Jun	91.8	91.9
	Jul	117.6	126.0
	Aug	141.4	143.7
	Sep	126.1	133.3
	Oct	139.0	152.8
	Nov	120.1	126.1
	Dec	90.8	107.5
2017	Jan	81.9	88.2
	Feb	94.2	92.5
	Mar	92.7	95.4
	Apr	109.6	122.6
	May	113.9	126.1
	Jun	93.2	99.1
	Jul	132.9	145.6
	Aug	119.4	148.6
	Sep	128.1	140.0
	Oct	133.9	147.9
	Nov	119.8	124.2
	Dec	90.7	106.0

Table 1: The indices of beds and rooms occupancy continue...

Year	Month	Index for Room Occupancy rates	Index for Bed Occupancy rates
2018	Jan	57.3	77.3
	Feb	73.9	80.2
	Mar	90.8	96.7
	Apr	94.3	101.9
	May	85.7	105.5
	Jun	90.2	93.8
	Jul	127.5	133.7
	Aug	130.6	142.4
	Sep	129.1	132.0
	Oct	138.7	143.2
	Nov	112.7	110.4
	Dec	89.3	96.3
2019	Jan	71.4	73.4
	Feb	86.8	81.2
	Mar	93.2	92.8
	Apr	105.4	111.2
	May	110.5	112.9
	Jun	101.4	99.3
	Jul	104.5	117.3
	Aug	118.1	132.6
	Sep	120.0	129.3
	Oct	124.8	134.8
	Nov	103.1	118.2
	Dec	77.7	95.2
2020	Jan	78.7	79.8
	Feb	82.7	81.7
	Mar	47.4	53.7
	Apr	3.9	4.8
	May	10.2	13.4
	Jun	14.1	15.2
	Jul	13.4	15.6
	Aug	14.3	13.3
	Sep	11.1	13.0
	Oct	26.9	31.2
	Nov	23.7	27.0
	Dec	49.9	69.1
2021	Jan	36.5	43.6
	Feb	36.7	38.7
	Mar	37.3	43.7
	Apr	56.3	60.6
	May	50.6	58.6
	Jun	29.1	32.0
	Jul	20.8	26.0
	Aug	36.3	43.0
	Sep	49.7	55.7
	Oct	61.6	72.1
	Nov	75.1	73.8

Note: Some graphs has been limited for better readability (Chart1 & Chart2)

### ***Methodology***

**Background:** The room and bed occupancy indices serves as a proxy to the tourism sector, a priority sector under NDP5.

**Data sources:** Hospitality Association of Namibia.

**Base year:** The volumes has been referenced to 2015 data as of November 2019

**Conversion:** 1 basis point = 0.01 percent

**Note: Some graphs has been limited for better readability (Chart1 & Chart2)**