

NCPI

Namibia Consumer Price Index

April 2019

Namibia Consumer Price Index - April 2019

Annual Inflation increases

The annual inflation rate for the month of April 2019 stood at 4.5 percent up from 3.6 percent recorded in April 2018. On a monthly basis it was estimated as 0.4 percent compared to 0.2 percent recorded last month.

Summary comments and overall inflation rate

As from this edition, marking the start of the 2019/2020 financial year, the NSA will now be publishing the Zonal CPIs as a value added to this report. These Zonal CPIs which make up the Namibia Consumer Price Index (NCPI) can be obtained at the end of the document.

The All items Index for April 2019 was estimated at 137.2 compared to 131.3 recorded in April 2018. The annual inflation rate increased to 4.5 percent in April 2019 from 3.6 percent registered during the same period last year, an increase of 0.9 percentage points.

The increase in the annual inflation rate resulted from increases recorded in the annual price levels of all the groups comprising the Namibia CPI with the exception of Health which dropped (from 5.6 percent to 2.5 percent), Miscellaneous goods and services (from 4.4 percent to 2.2 percent), Housing, water, electricity, gas and other fuels; (from 3.4 percent to 2.2 percent) and Furnishing, household equipment and routine maintenance of the house (from 1.1 percent to 1.0 percent).

The annual average and monthly average inflation rates for the period May 2018 to April 2019 stood at 4.6 percent and 0.4 percent respectively while the calendar year annual average and

monthly average (from January 2019 to April 2019 were estimated at 4.5 percent and 0.4 percent respectively.

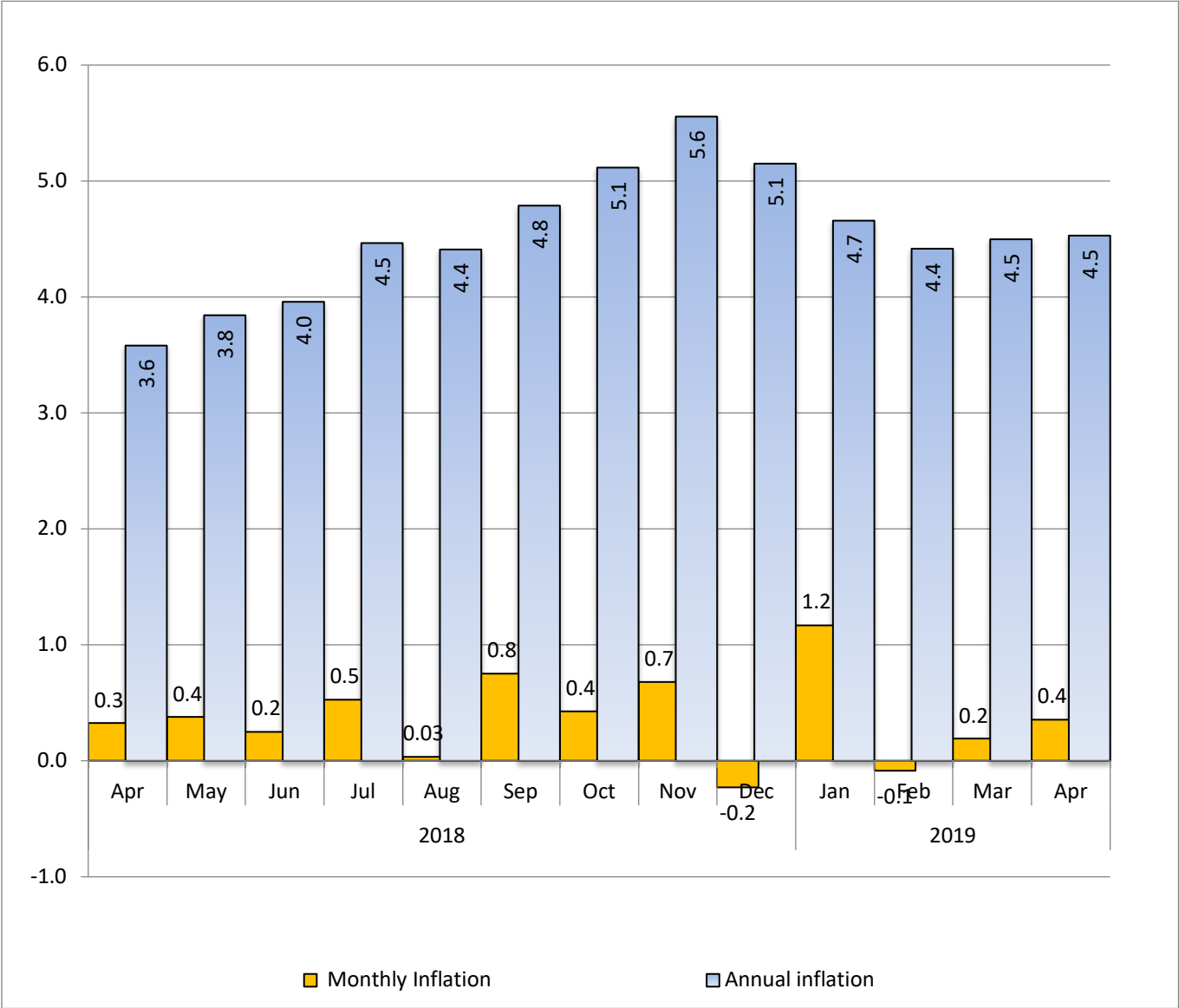
On a monthly basis, the inflation rate increased to 0.4 percent up from 0.2 percent registered in the preceding month.

A handwritten signature in orange ink, appearing to read 'Alex Shimuafeni', with a stylized flourish at the end.

Alex Shimuafeni
Statistician-General & CEO

Overall inflation rate

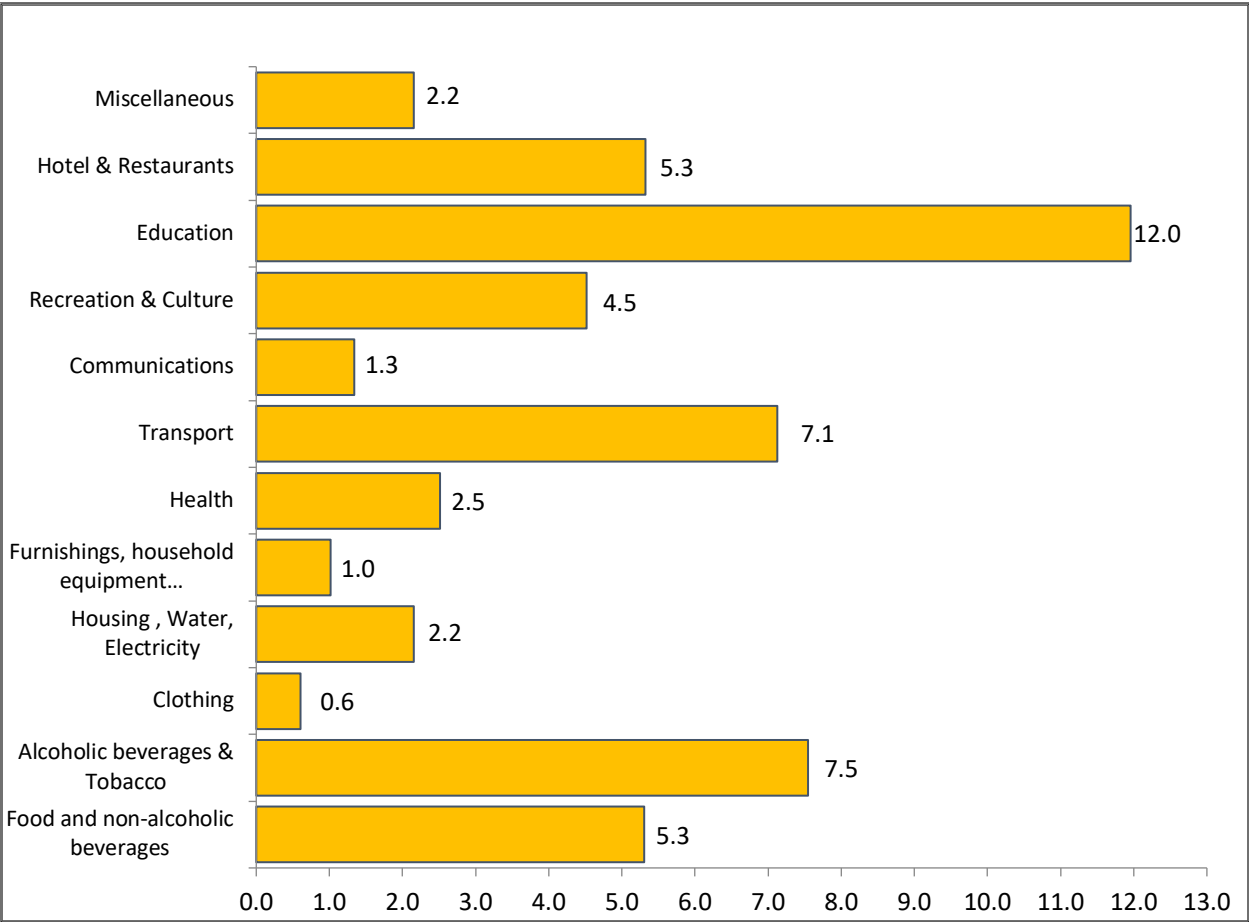
Chart 1: NCPI; Monthly and annual percentage changes; April 2019 (Dec 2012 = 100)



Main drivers of inflation

During the month of April 2019 the main drivers of annual inflation rate were Education (12.0 percent); Alcoholic beverages and tobacco (7.5 percent); Transport (7.1 percent), Food and non-alcoholic beverages and Hotel, cafes and restaurants each recorded (5.3 percent) respectively and Recreation and culture (4.5 percent).

Chart 2: NCPI; Annual percentage changes by all groups, April 2019 (Dec 2012 = 100)



BOX 1: NCPI BASKET WEIGHTS

Inflation is calculated based on a basket of goods and services, containing a representative sample of the goods and or services commonly consumed in a country, and weighted in accordance with the relative percentage of expenditure allotted to each of the said goods at household level. The price of these goods and services are then tracked over time, to illustrate the change in the cost of living over time. As spending patterns change, new products and services are added to the basket, and the basket reweighted so as to better capture the current spending patterns of the consumer at the current point in time.

As such, the inflation basket is generally reconstituted every five years. In Namibia, the basket was last rebased in 2013, using household expenditure data collected in the 2009/10 Household Income and Expenditure Survey. The basket now contains over 350 items, grouped into 12 categories and 55 sub-categories, for which prices are collected on a monthly basis from more than 900 retail outlets.

Namibian inflation however, is largely determined by three categories of the overall NCPI basket, namely: (i) *Housing, water, electricity, gas and other fuels*, (ii) *Food and non-alcoholic beverages* and (iii) *Transport*, which cumulatively make up just under 60 percent of the total inflation basket. Additionally, following the rebasing of the NCPI basket in 2013, "*Alcoholic beverages and tobacco*" make up an additional 12.6 percent of the basket, meaning that the four largest categories represent well over 70 percent of the total basket. As such, a large increase in inflation in these categories has a greater impact on the overall inflation than do increases in the lower weighted categories. Thus, it is rare to see major increases in overall inflation attributed to the lower weighted categories, despite the fact that these categories may have seen relatively high inflation in their own right.

Category	Weights (%)
Housing, Water, Electricity, Gas and Other Fuels	28.36
Food and Non- Alcoholic Beverages	16.45
Transport	14.28
Alcoholic Beverages and Tobacco	12.59
Furnishings, Household Equipment....	5.47
Miscellaneous Goods and Services	5.39
Communication	3.81
Education	3.65
Recreation and Culture	3.55
Clothing and Footwear	3.05
Health	2.01
Hotels, Cafés and Restaurants	1.39

Major groups

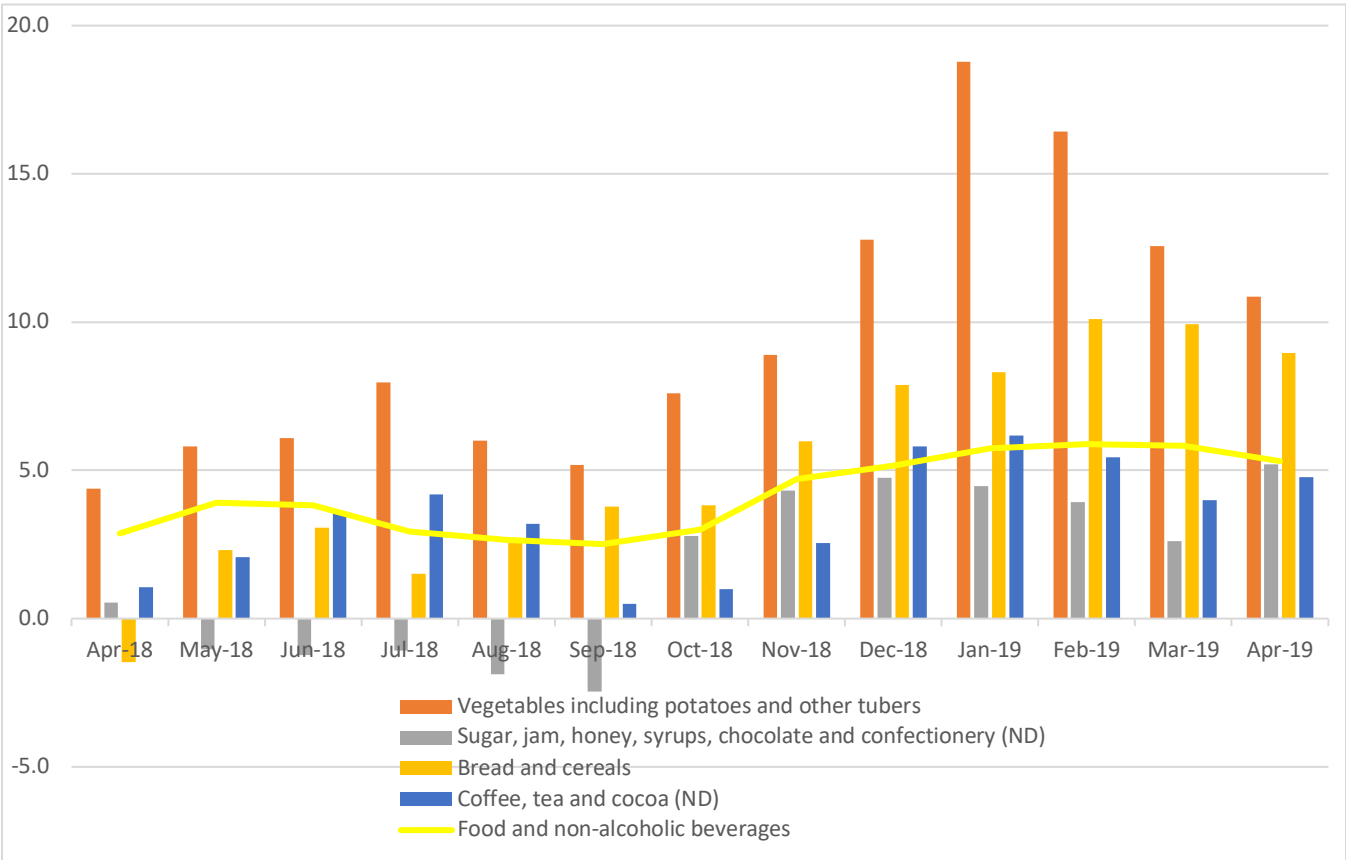
Food and non-alcoholic beverages

For the month of April 2019, the category's annual inflation rate was estimated at 5.3 percent compared to 2.9 percent registered during the same period last year an increase of 2.4 percentage points. The noteworthy increase emanated from annual price increases recorded in the sub-groups of Bread and cereals (from -1.5 percent to 9.0 percent); Vegetables including potatoes and other tubers (from 4.4 percent to 10.9 percent), Sugar, jam, honey, syrups,

chocolates and confectionery (from 0.6 percent to 5.2 percent), and Coffee, tea and cocoa (from 1.1 percent to 4.8 percent).

The monthly inflation rate for Food and non-alcoholic beverages was recorded at -0.2 percent compared to 0.0 percent registered in the previous month.

Chart 3: NCPI; Annual inflation rates for selected food sub-categories; April 2019 (Dec 2012 = 100)



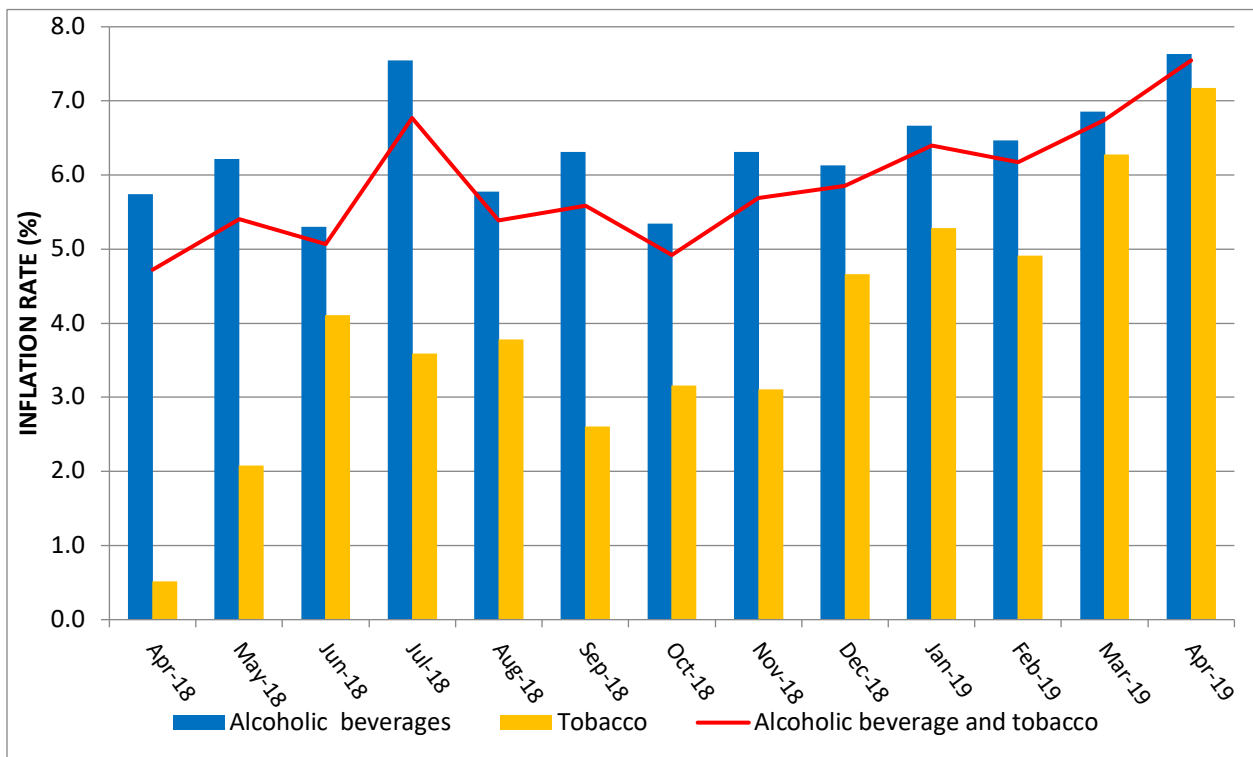
Alcoholic beverages and tobacco

The annual inflation rate for April 2019 for Alcoholic beverages and tobacco stood at 7.5 percent compared to 4.7 percent registered in April 2018, resulting an increase of 2.8

percentage points. This movement emanated from increases witnessed in the price levels of both the Alcoholic beverages and Tobacco sub-components.

On a monthly basis, the monthly inflation rate for this group increased to 1.6 percent from 0.9 percent recorded a month earlier.

Chart 4: NCPI; Annual inflation rate for Alcoholic beverages and tobacco; April 2019 (Dec 2012 = 100)

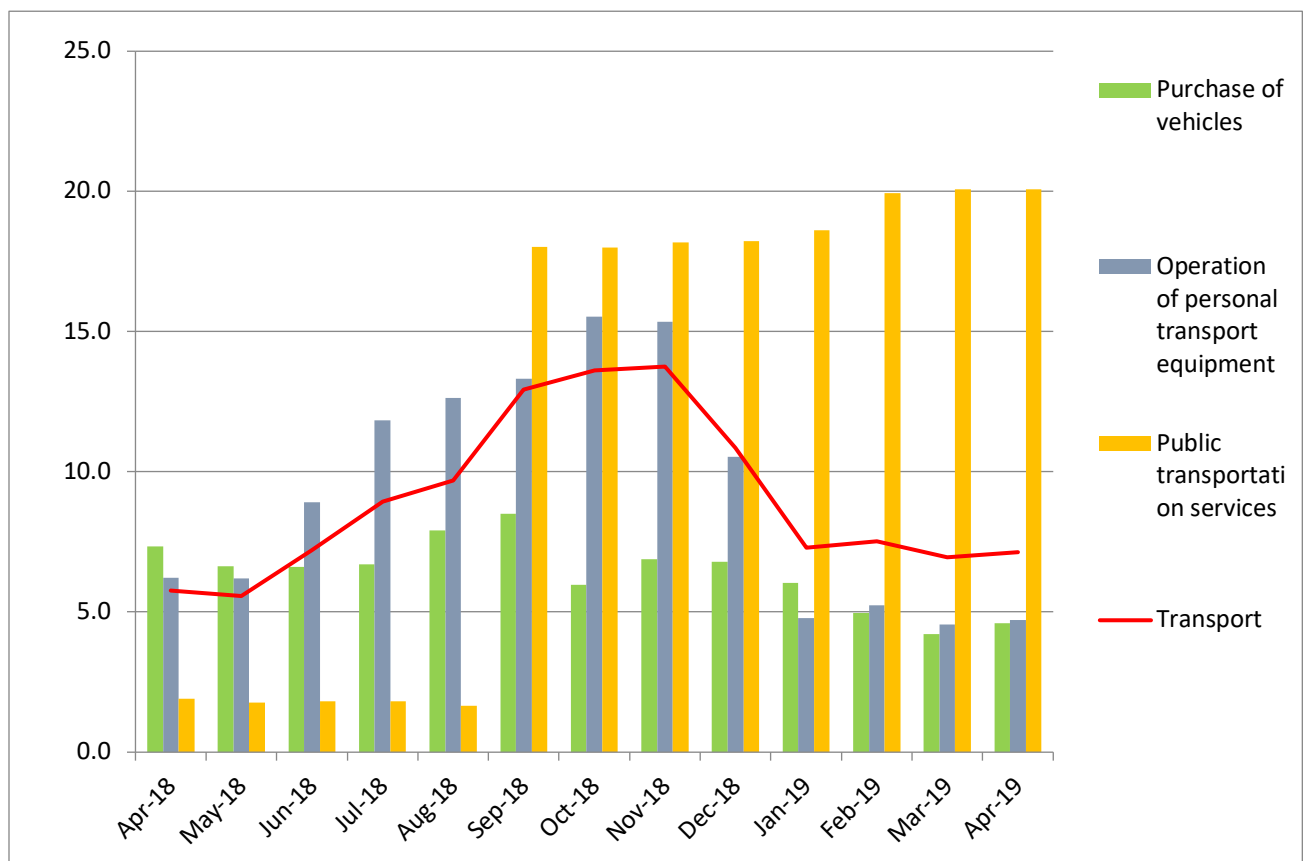


Transport

The annual inflation rate for the Transport component stood at 7.1 percent compared to 5.8 percent obtained during the same period a year earlier an increase of 1.3 percentage points. The increase resulted from increases witnessed in the price levels of Public transportation services which increased from 1.9 percent to 20.1 percent.

The monthly inflation rate for this group increased to 0.7 percent from -0.2 percent.

Chart 5: NCPI; Annual inflation rate for Transport; April 2019 (Dec 2012 = 100)

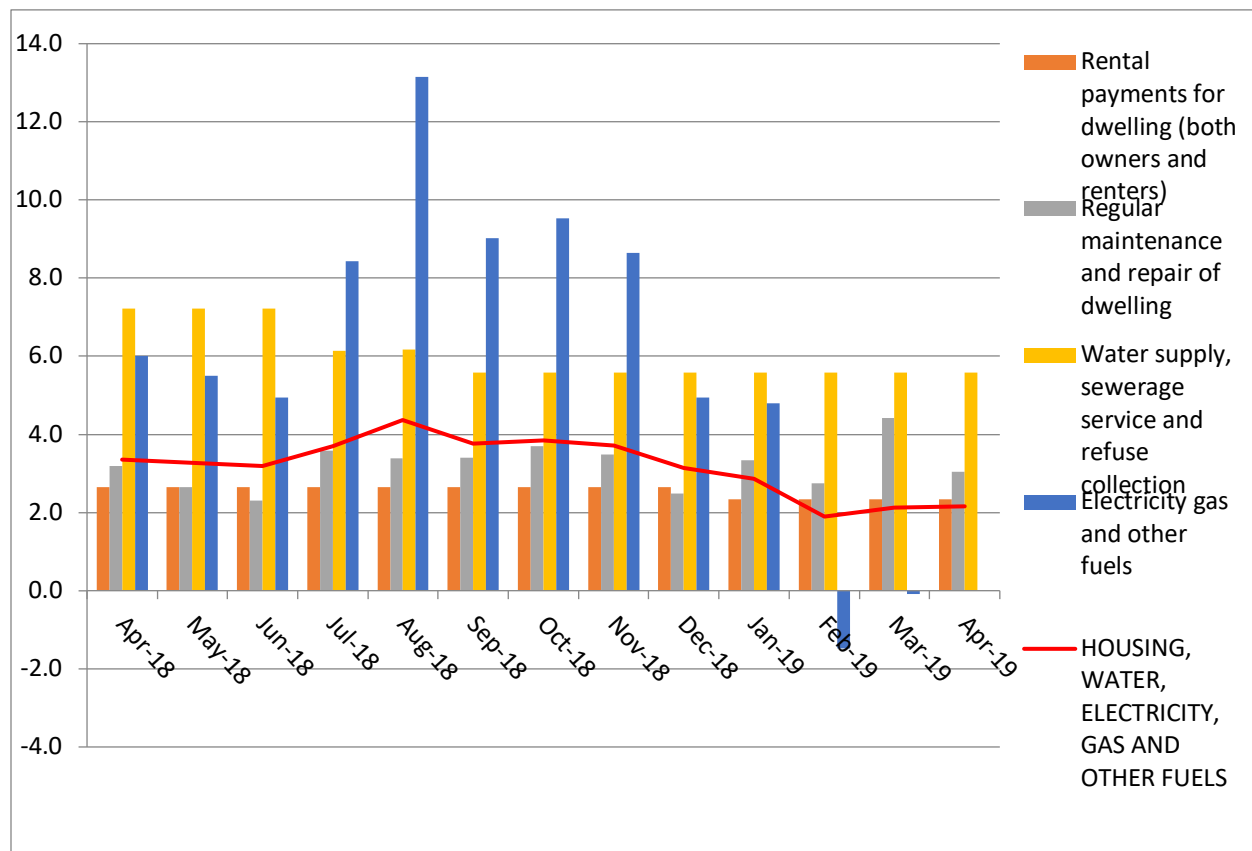


Housing, water, electricity, gas and other fuels

The annual inflation rate for Housing, water, electricity, gas and other fuels for the month of April 2019 stood at 2.2 percent compared to 3.4 percent recorded during the same period a year earlier. This decrease originated from decreases registered in all sub-components of this group.

On a monthly basis, the inflation rate for this group stood at 0.0 percent as compared to 0.2 percent recorded a month earlier.

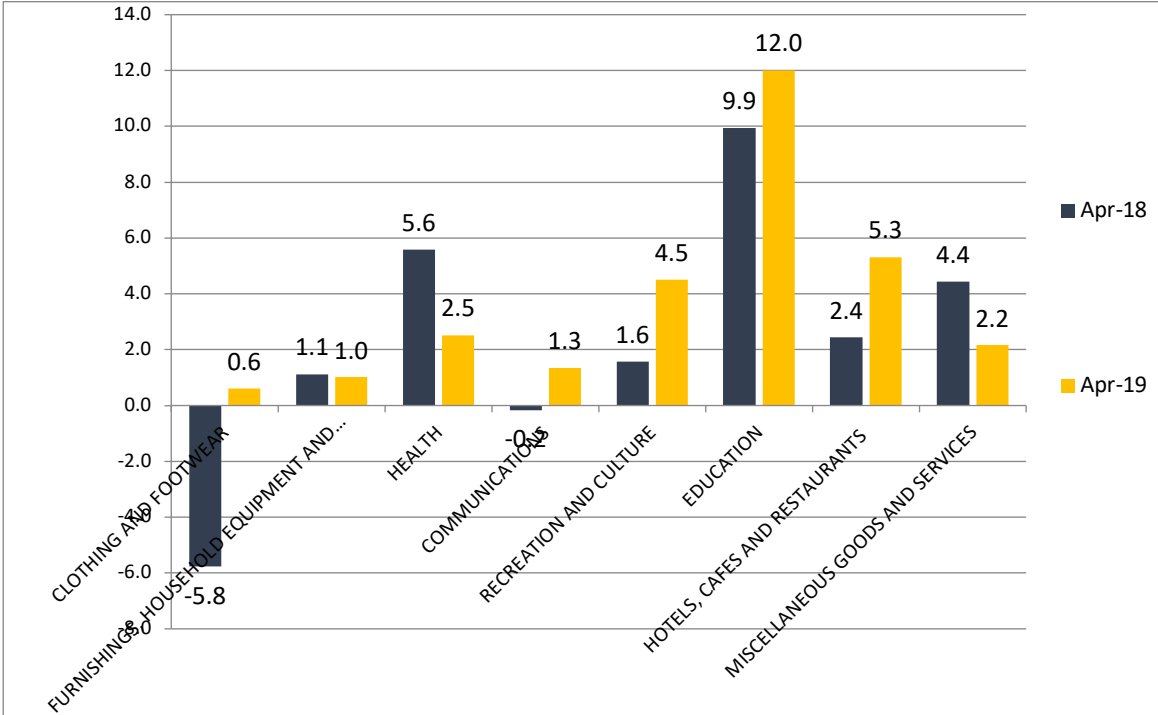
Chart 6: NCPI; Annual Inflation for Housing, water, electricity, gas and other fuels; April 2019 (Dec 2012 = 100)



Minor groups

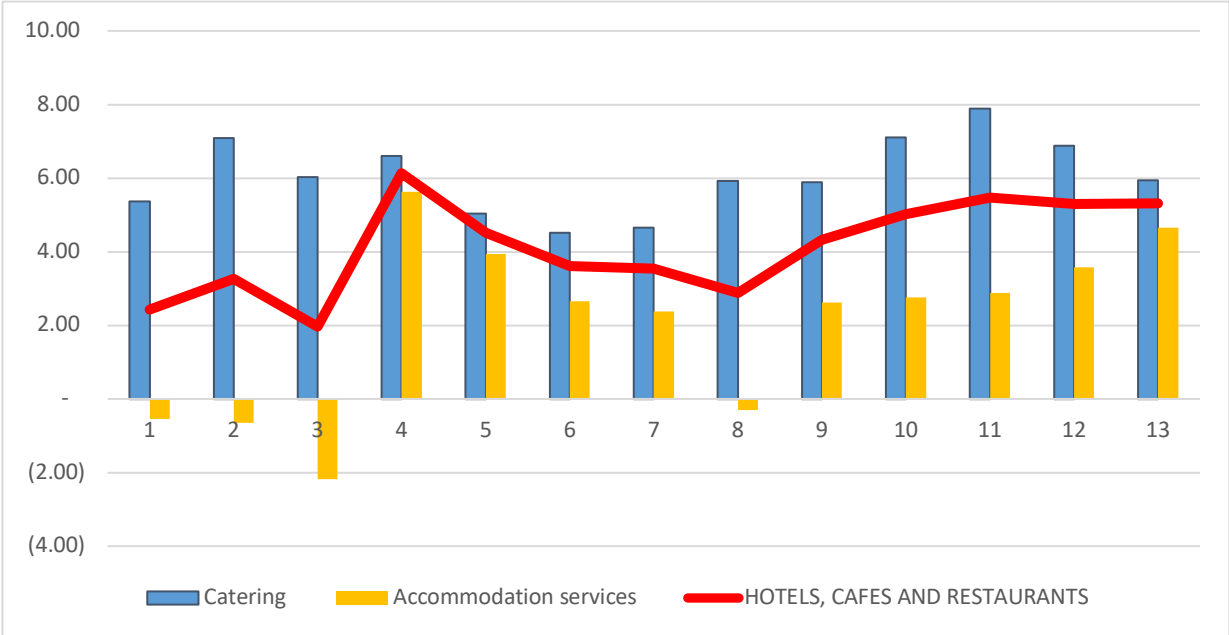
For the minor groups, high annual inflation rates were observed in Education (12.0 percent); Hotels, cafés and restaurants (5.3 percent); Recreation and culture (4.5 percent); Health (2.5 percent); and Miscellaneous goods and services (2.2 percent).

Chart 7: NCPI; Annual inflation rates for Minor groups; April 2019 (Dec 2012 = 100)



BOX 2: CHART OF THE MONTH

Chart 8: NCPI; Annual inflation for Hotels, cafés and restaurants; April 2019 (Dec 2012 = 100)



The annual inflation rate for Hotels, cafes and restaurants stood at 5.3 percent in April 2019 compared to 2.4 percent recorded in April 2018, resulting in an increase of 2.9 percentage points. This increase resulted from increases registered in the sub components of Accommodation services which increased from -0.5 percent to 4.7 percent and Catering increased from 5.4 percent to 5.9 percent.

Goods and Services Inflation

For the month of April 2019, the Index for Goods and Services stood at 138.0 and 136.3 compared to the corresponding indices of 132.1 and 130.2 recorded during the same period last year. The monthly and annual inflation rates for Goods were 0.5 percent and 4.4 percent while those of Services stood at 0.2 percent and 4.7 percent respectively.

The corresponding rates recorded during the same period last year stood at 0.5 percent and 3.1 percent for Goods and 0.1 percent and 4.3 percent for Services respectively.

Chart 9: NCPI; Goods and Services monthly and annual inflation rates; April 2019 (Dec 2012 = 100)

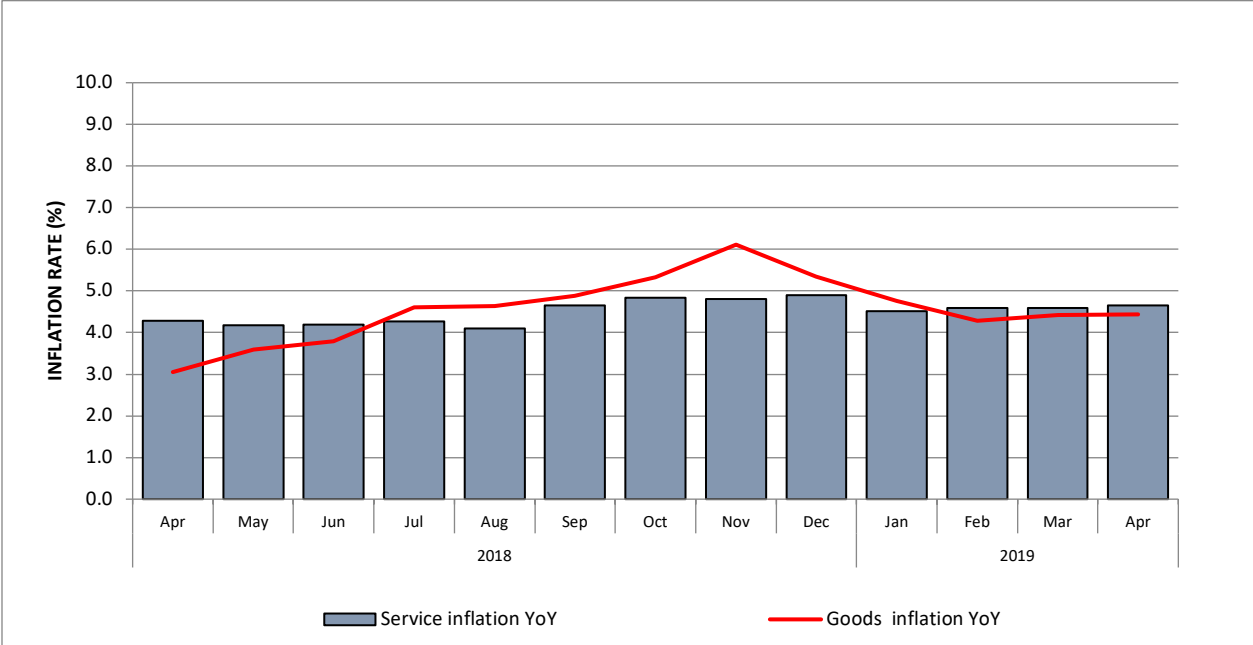


Table 1: NCPI: All-Items Index, monthly and annual percentage changes (Dec 2012 =100)			
Period	Index	m-o-m	y-o-y
Jan-17	126.1	3.2	8.2
Feb-17	126.3	0.2	7.8
Mar-17	126.4	0.1	7.0
Apr-17	126.8	0.3	6.7
May-17	126.9	0.1	6.3
Jun-17	127.1	0.1	6.1
Jul-17	127.1	0.04	5.4
Aug-17	127.3	0.1	5.4
Sep-17	127.8	0.4	5.6
Oct-17	127.9	0.1	5.2
Nov-17	128.2	0.3	5.2
Dec-17	128.4	0.2	5.2
An. Av	127.2	0.4	6.2
Jan-18	130.5	1.6	3.6
Feb-18	130.7	0.1	3.5
Mar-18	130.9	0.1	3.5
Apr-18	131.3	0.3	3.6
May-18	131.8	0.4	3.8
Jun-18	132.1	0.2	4.0
Jul-18	132.8	0.5	4.5
Aug-18	132.9	0.0	4.4
Sep-18	133.9	0.8	4.8
Oct-18	134.4	0.4	5.1
Nov-18	135.4	0.7	5.6
Dec-18	135.0	-0.2	5.1
An. Av	132.6	0.4	4.3
Jan-19	136.6	1.2	4.7
Feb-19	136.5	-0.1	4.4
Mar-19	136.8	0.2	4.5
Apr-19	137.2	0.4	4.5

Table 2: NCPI for April 2019 by main groups and sub-groups (Dec.2012=100)

	Weights	CPI			Inflation Rate	
		Apr-18	Mar-19	Apr-19	m-o-m	y-o-y
0.0 ALL ITEMS	100.00	131.3	136.8	137.2	0.4	4.5
GOODS	57.7	132.1	137.3	138.0	0.5	4.4
SERVICES	42.3	130.2	136.1	136.3	0.2	4.7
01 FOOD AND NON-ALCOHOLIC BEVERAGES	16.45	140.9	148.7	148.4	-0.2	5.3
Food	14.78	141.9	150.2	149.7	-0.3	5.5
Bread and cereals	4.84	127.7	140.6	139.1	-1.0	9.0
Meat	3.53	149.3	153.5	151.8	-1.1	1.7
Fish	0.81	152.1	157.9	159.7	1.1	5.0
Oils and fats	0.78	133.2	134.0	133.7	-0.2	0.4
Fruit	0.33	166.7	179.2	183.0	2.1	9.8
Vegetables including potatoes and other tubers	1.23	156.8	170.2	173.9	2.1	10.9
Sugar, jam, honey, syrups, chocolate and confectionery	1.44	151.5	160.0	159.4	-0.3	5.2
Food products n.e.c.	0.65	141.1	142.8	143.0	0.2	1.4
Non-alcoholic beverages	1.66	131.7	135.1	135.9	0.6	3.2
Coffee, tea and cocoa	0.31	159.6	166.7	167.2	0.3	4.8
Mineral waters, soft drinks and juices	1.35	125.3	127.8	128.7	0.7	2.7
02 ALCOHOLIC BEVERAGES AND TOBACCO	12.59	140.5	148.7	151.0	1.6	7.5
Alcoholic beverages	9.99	143.8	152.2	154.8	1.7	7.6
Tobacco	2.61	127.5	135.5	136.6	0.8	7.2
03 CLOTHING AND FOOTWEAR	3.05	102.1	102.7	102.7	0.1	0.6
Clothing	2.04	104.6	105.4	105.2	-0.2	0.6
Clothing materials	0.07	140.4	146.1	146.1	0.0	4.1
Ready-made clothing	1.93	103.1	103.8	103.6	-0.2	0.5

	Men's clothing	0.58	111.6	112.3	111.1	-1.1	-0.5
	Women's clothing	0.70	89.0	89.9	88.9	-1.1	-0.1
	Children's clothing	0.66	109.0	109.9	111.3	1.3	2.1
	Boys' clothing	0.24	108.4	107.7	110.4	2.5	1.9
	Girls' clothing	0.33	108.2	112.0	112.9	0.8	4.4
	Infants' clothing	0.09	115.3	110.0	110.0	0.0	-4.6
	Other articles of clothing and clothing accessories	0.05	118.4	112.6	115.2	2.3	-2.7
	Dry cleaning, repair and hire of clothing	0.00	127.5	130.2	130.2	0.0	2.1
	Footwear	1.01	97.0	97.1	97.7	0.6	0.7
	Adult footwear	0.80	92.2	91.9	92.8	0.9	0.6
	Children's footwear	0.20	113.5	114.8	114.2	-0.5	0.6
	Repair of footwear	0.01	140.6	145.3	145.3	0.0	3.4
04	HOUSING, WATER, ELECTRICITY, GAS AND OTHER FUELS	28.36	131.1	133.9	133.9	0.0	2.2
	Rental payments for dwelling (both owners and renters)	23.28	126.7	129.7	129.7	0.0	2.3
	Regular maintenance and repair of dwelling	0.19	135.1	139.3	139.2	0.0	3.0
	Water supply, sewerage service and refuse collection	1.03	165.1	174.3	174.3	0.0	5.6
	Electricity gas and other fuels	3.86	148.3	148.1	148.5	0.2	0.2
05	FURNISHINGS, HOUSEHOLD EQUIPMENT AND ROUTINE MAINTENANCE OF THE HOUSE	5.47	124.5	125.2	125.8	0.5	1.0
	Furniture, furnishings, decorations, carpets, floor coverings, incl. repairs	1.78	99.9	97.2	97.9	0.7	-1.9
	Furniture and furnishings	1.69	98.4	95.7	96.4	0.8	-2.0
	Carpets and other floor coverings	0.07	113.6	109.5	108.7	-0.7	-4.3
	Repair of furnishings and floor coverings	0.02	183.5	199.2	200.3	0.5	9.1
	Household textiles	0.73	130.0	132.3	132.7	0.3	2.1

	Heating and cooking appliances, refrigerators, washing machines and similar major household appliances, etc	0.92	126.3	126.1	126.2	0.1	0.0
	Glassware, tableware and household utensils	0.22	145.9	152.1	152.4	0.2	4.5
	Tools and equipment for house and garden	0.43	126.0	128.6	128.6	0.0	2.1
	Goods and services for routine household maintenance	1.36	148.7	151.9	153.0	0.7	2.9
06	HEALTH	2.01	131.6	135.5	134.9	-0.4	2.5
	Medical products, appliances and equipment	0.84	126.1	130.5	129.1	-1.1	2.4
	Outpatient Services, medical, dental and paramedical	0.98	142.3	146.5	146.5	0.0	3.0
	Hospital services	0.19	100.0	100.0	100.0	0.0	0.0
07	TRANSPORT	14.28	124.1	132.0	133.0	0.7	7.1
	Purchase of vehicles	2.88	150.0	154.5	156.9	1.6	4.6
	Operation of personal transport equipment	8.96	118.2	123.0	123.7	0.6	4.7
	Public transportation services	2.44	115.7	138.9	138.9	0.0	20.1
08	COMMUNICATIONS	3.81	106.7	108.1	108.1	0.0	1.3
09	RECREATION AND CULTURE	3.55	127.9	133.4	133.7	0.3	4.5
	Audio-visual, photographic and data processing equip. incl. repairs	1.16	115.2	120.5	120.3	-0.2	4.4

Zonal Consumer Price Index

Background

Since January 2005, the then Central Bureau of Statistics (CBS) under the National Planning Commission (NPC) published a monthly Consumer Price Index known as the Namibia Consumer Price Index for (NCPI) replacing the Interim Consumer Price Index (ICPI) which has been in existence since 1993. The Index was known as the Interim Consumer Prices Index-Windhoek and refers to the expenditure patterns of the households which resided in Windhoek (Katutura and Khomasdal). The weights and items were derived from a Household Expenditure Survey covering 800 households conducted during October and November 1985.

The NCPI is designed to cover the entire economic territory of the country and includes national, urban and rural households of all income groups as derived from the Namibia Household Income and Expenditure Survey (NHIES). For the compilation of the National CPI, all administrative regions of the country were grouped into three Zones, with each zone considered as one geographic area as follows.

Zone 1 covers the expenditure patterns of the regions in the northern part of the country namely Kavango East, Kavango West, Kunene, Ohangwena, Omusati, Oshana, Oshikoto, Otjozondjupa and Zambezi. Prices are collected from the following towns: Katima Mulilo (76 retail outlets covering mainly the Central Business District); Oshakati (107 retail outlets covering mainly Game Shopping Center, Yetu Shopping Center, Oshana Mall, Marula Mall and Ongwediva); and Otjiwarongo (114 retail outlets covering mainly the Central Business District, Orwetoveni, and the Industrial Area).

Zone 2 covers the expenditure patterns of Khomas region and the price collection covers Windhoek (218 retail outlets covering mainly Khomasdal, Katutura, Northern Industrial Area,

Southern Industrial Area, Pioneers Park, Hochland Park, Prosperita, Klein Windhoek, Eros and Kleine Kuppe).

Zone 3 covers the expenditure patterns of //Karas, Erongo, Hardap, and Omaheke regions with prices being collected from Keetmanshoop (86 retail outlets covering mainly Central Business District, West Dene and Tseiblagte); Swakopmund (108 retail outlets covering Central Business District, Mondesa, Tamariskia, Industrial Area); Mariental (61 retail outlets covering mainly Central Business District and Ombili); as well as Gobabis (59 retail outlets mainly covering the Central Business District), respectively.

The localities identified for price collection were selected based on a mixed criterion of:

- (i) the relative importance of the locality as determined by its relative share exceeding 30 percent of the total household expenditure at national level;
- (ii) geographic distribution of economic activities; and
- (iii) regional capitals.

Summary comments of Zonal CPIs

Zone 1 (Northern Part)

The **Zone 1** All Items Index for April 2019 was estimated at 136.1 compared to 131.1 registered in April 2018. The annual inflation rate increased to 3.8 percent in April 2019 from 3.7 percent registered in April of the previous year, an increase of 0.1 percentage points. The increases in the annual inflation rate resulted from a rise in the price levels of Clothing and footwear (from -7.3 percent to -0.8 percent); Recreation and culture (from 1.2 percent to 5.5 percent); Transport (from 5.3 percent to 7.3 percent); Food and non-alcoholic beverages (from 2.0 percent to 4.7 percent); Education (from 9.5 percent to 8.8 percent); Alcoholic beverage and tobacco (from 6.0 percent to 7.1 percent) and Communication (from -0.1 percent to 1.9 percent) respectively.

On a monthly basis, the inflation rate for April 2019 stood at 0.1 percent a decrease from 0.2 recorded a month earlier.

Table 1: Zone 1 CPI: All-Items Index, monthly and annual percentage changes (Dec 2012 =100)				
Period		Monthly Index	Monthly inflation rate	Annual inflation rate
2018	Jan	130.5	1.6	3.4
	Feb	130.4	-0.1	3.2
	Mar	130.7	0.2	3.4
	Apr	131.1	0.4	3.7
	May	131.9	0.6	4.3
	Jun	131.9	0.0	4.0
	Jul	132.8	0.7	4.6
	Aug	132.7	-0.1	4.8
	Sep	133.7	0.8	5.3
	Oct	134.1	0.3	5.2
	Nov	135.6	1.1	5.9
	Dec	134.7	-0.7	4.8
	An. Av	132.5	0.4	4.4
2019	Jan	136.1	1.0	4.2
	Feb	135.8	-0.4	4.1
	Mar	136.0	0.2	4.1
	Apr	136.1	0.1	3.8

Note: These time series run from 2008 only for illustrative purposes and for comparing with the previous year. However, the figures for Zonal CPIs are available since the NCPI inception in 2002.

Zone 2 (Windhoek Area)

The **Zone 2** All Items Index for April 2019 increased to 134.7 from 128.3 recorded in April 2018. The annual inflation rate increased from 3.0 percent to 5.0 percent, an increase of 2 percentage points.

The increase resulted from increases in all the groups comprising the Zone 2 CPI basket with the exception of Health which slowed (from 5.2 percent to 2.4 percent) and Miscellaneous goods and services (from 4.3 percent to 2.0 percent).

On a monthly basis the inflation rate stood at 0.8 percent to record an increase of 0.5 percentage points when compared to 0.3 percent recorded during the previous month.

Period		Monthly Index	Monthly inflation rate	Annual inflation rate
2018	Jan	127.4	1.4	3.2
	Feb	127.6	0.2	3.2
	Mar	127.8	0.2	3.1
	Apr	128.3	0.4	3.0
	May	128.6	0.2	2.9
	Jun	129.1	0.4	3.2
	Jul	129.9	0.6	3.9
	Aug	129.9	0.0	4.4
	Sep	130.9	0.8	4.4
	Oct	131.5	0.4	5.0
	Nov	132.1	0.5	5.1
	Dec	131.9	-0.2	5.0
	An. Av	129.6	0.4	3.9
2019	Jan	133.7	1.4	4.9
	Feb	133.3	0.0	4.4
	Mar	133.7	0.3	4.6
	Apr	134.7	0.8	5.0

Note: These time series run from 2008 only for illustrative purposes and for comparing with the previous year. However, the figures for Zonal CPIs are available since the NCPI inception in 2002.

Zone 3 (Eastern, Southern & Western Parts)

For April 2019, the **Zone 3** All Items Index stood at 143.3 compared to 136.7 recorded in the same period last year. The annual inflation rate stood at 4.8 percent which showed no change when compared to 4.8 percent recorded in April 2018. However, increases in the inflation were recorded in the price levels of Food and non-alcoholic beverage (from 4.0 percent to 6.2 percent), Alcoholic beverage and tobacco (from 3.9 percent to 6.9 percent), Clothing and footwear (from 0.8 percent to 5.1 percent), Furnishing household and routine maintenance of the house (from 1.9 percent to 2.0 percent), Transport (from 5.4 percent to 7.7 percent), Recreation and culture (from 2.5 percent to 4.3 percent) and Education (from 7.6 percent to 9.4 percent).

On a monthly basis, the inflation rate stood at 0.1 percent which showed no change when compared to the previous month.

Table 3: Zone 3 CPI: All-Items Index, monthly and annual percentage changes (Dec 2012 =100)				
Period		Monthly Index	Monthly inflation rate	Annual inflation rate
2018	Jan	135.6	2.2	4.5
	Feb	136.3	0.5	4.8
	Mar	136.5	0.1	4.9
	Apr	136.7	0.1	4.8
	May	137.1	0.3	5.1
	Jun	137.6	0.4	5.6
	Jul	137.9	0.2	5.6
	Aug	138.3	0.3	5.1
	Sep	139.1	0.6	5.2
	Oct	139.8	0.5	5.9
	Nov	140.5	0.5	6.0
	Dec	140.8	0.2	6.1
	Av	138.0	0.5	5.3
2019	Jan	142.5	1.2	4.9
	Feb	142.9	0.3	4.9
	Mar	143.1	0.1	4.9
	Apr	143.3	0.1	4.8

Note: These time series run from 2008 only for illustrative purposes and for comparing with the previous year. However, the figures for Zonal CPIs are available since the NCPI inception in 2002.

Additional detailed information on Zonal CPIs can be seen in the Excel tables as Annexures.

Annex I: Zone 1 (Northern Part)

- (i) **Table 1: Zone 1 CPI: All-Items Index, monthly and annual percentage changes**
- (ii) **Table 2: Zone 1 CPI Indices**
- (iii) **Table 3: Zone 1 CPI Monthly Percentage Changes**
- (iv) **Table 4: Zone 1 CPI Annual Percentage Changes**

Annex II: Zone 2 (Windhoek Area)

- (I) **Table 1: Zone 2 CPI All-Items Index, monthly and annual percentage changes**
- (II) **Table 2: Zone 2 CPI Indices**
- (III) **Table 3: Zone 2 CPI Monthly Percentage Changes**
- (IV) **Table 4: Zone 2 CPI Annual Percentage Changes**

Zone 3 (Eastern, Southern & Western Parts)

- (I) **Table 1: Zone 3 CPI All-Items Index, monthly and annual percentage changes**
- (II) **Table 2: Zone 3 CPI Indices**
- (III) **Table 3: Zone 3 CPI Monthly Percentage Changes**
- (IV) **Table 4: Zone 3 CPI Annual Percentage Changes**



Namibia Statistics Agency
P.O. Box 2133, FGI House, Post
Street Mall,
Windhoek, Namibia



Email: info@nsa.org.na
www.nsa.org.na



Tel: +264 61 431 3200
Fax: +264 61 431 3253



Scan to
download our
free Mobile
Statistics App



Scan to visit our
Geoportals