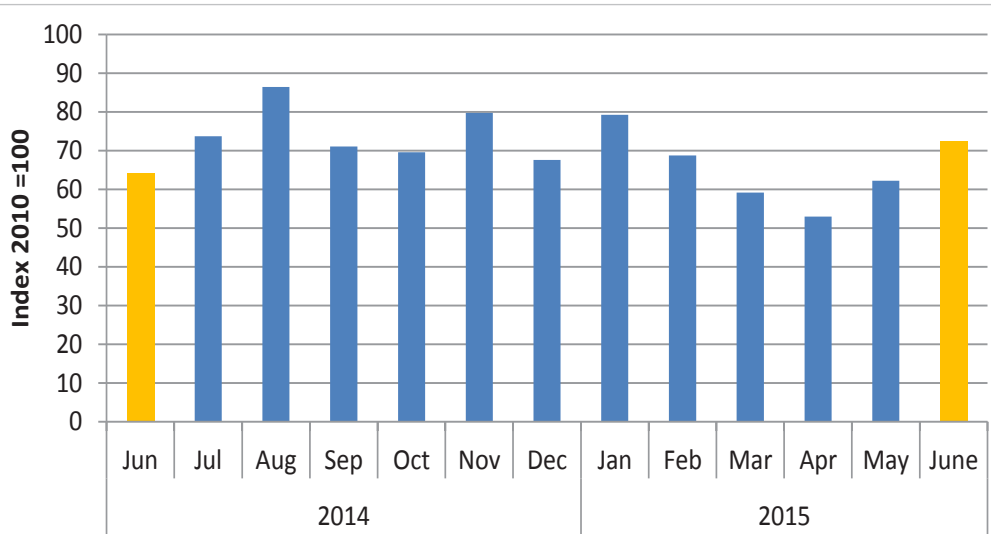


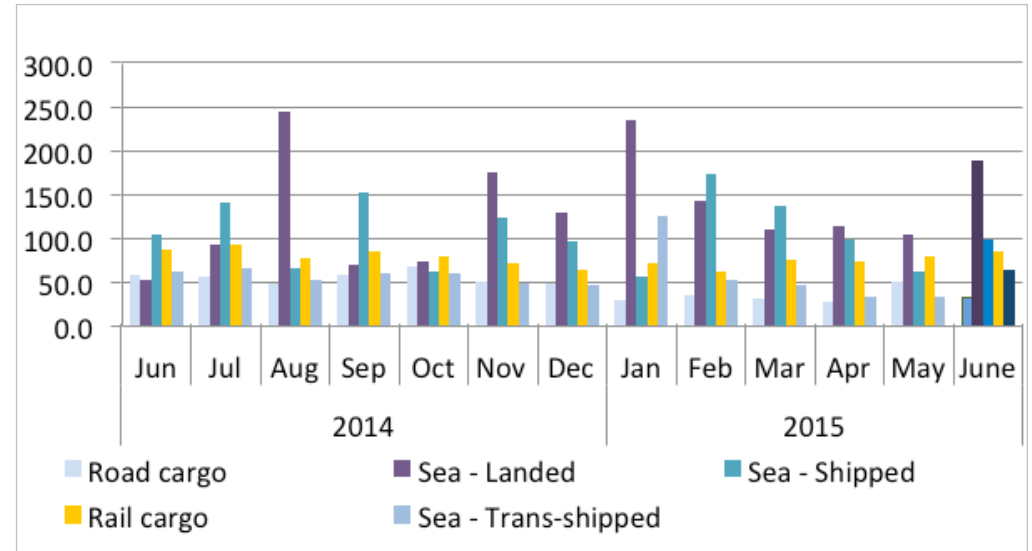


Chart 1: Composite Transport Index



- The composite transport index which consists of rail cargo, road cargo and sea cargo picked up in June 2015 recording an index of 72.4 points from 62.3 points in May 2015. This represents an increase of 16.3 percent m/m, and is attributed to an increase in cargo transported by sea.
- In terms of volume, the cargo transported by sea stood at 602 706 tonnes, an increase of 77.4 percent m/m and total volume transported stood at 762 542 tonnes during the month of June 2015 compared to 499 331 tonnes recorded in the previous month, an increase of 263 212 tonnes.
- (Chart 2) Sea-shipped sub-index increased with 56.7 per cent in June 2015 recording an index of 99.2 basis points compared to 63.3 basis points in May 2015. When compared to y/y, the index fell by 4.4 percent.

Chart 2: Transport Sub-Sector Index



- Sea-landed sub-index recorded an index of 188.8 basis points in June 2015 up from 104.6 basis points recorded in May 2015, thus increasing by 80.4 percent m/m.
- The railway cargo sub-index increased by 6.5 percent with an index of 85.5 basis points in June 2015 from 80.3 basis points in May 2015. However, y/y the index posted a negative growth of 2.2 percent.
- The sea transshipped sub-index in June 2015 increased from 33.1 recorded in May 2015, to 64.2 basis points in June 2015. Where-as, y/y the index increased by 2.6 percent.
- Road cargo with an index 33.7 in June 2015 from a high index of 52.0 basis points in May 2015. This translates to a decrease of 35.2 percent m/m and 42.3 percent y/y.



Monthly Transport Report

Table 1 A: Transport Index

Year	Month	Rail cargo	Road cargo	Sea cargo	Overall
2011	Jan	94.1	69.8	87.5	77.9
	Feb	83.9	72.4	128.9	93.0
	Mar	100.7	89.9	62.5	81.3
	Apr	81.8	85.3	77.2	82.2
	May	87.9	91.3	112.9	98.5
	June	89.2	96.5	93.0	94.7
	July	98.5	95.5	109.0	100.4
	Aug	121.3	103.4	120.3	110.7
	Sept	120.4	95.5	77.1	91.1
	Oct	112.9	98.4	131.3	111.0
	Nov	118.2	99.2	114.8	106.2
	Dec	78.2	80.8	78.2	79.7
2012	Jan	104.1	98.9	107.6	102.3
	Feb	72.1	82.2	145.7	103.4
	Mar	97.6	92.1	91.4	92.3
	Apr	87.0	71.6	118.6	89.2
	May	95.4	75.8	83.9	80.2
	June	89.5	90.0	141.0	107.7
	July	95.9	90.2	131.7	105.1
	Aug	94.1	87.9	149.1	109.7
	Sept	100.5	96.3	76.3	89.7
	Oct	111.5	92.9	123.1	104.9
	Nov	95.2	104.4	124.6	110.6
	Dec	71.6	82.6	104.0	89.1
2013	Jan	88.1	87.0	158.6	112.0
	Feb	71.2	77.1	117.7	90.7
	Mar	69.9	78.0	75.5	76.5
	Apr	94.8	84.5	98.9	90.4

Year	Month	Rail cargo	Road cargo	Sea cargo	Overall
2013	May	93.4	80.5	83.9	82.8
	June	89.7	75.4	99.0	84.7
	July	105.9	74.9	144.9	101.7
	Aug	89.6	80.3	147.0	104.2
	Sept	99.0	82.4	63.1	77.0
	Oct	86.2	65.2	69.6	68.5
	Nov	104.4	61.2	100.0	78.2
	Dec	70.5	39.9	77.4	55.4
2014	Jan	68.6	57.1	132.8	84.3
	Feb	76.6	79.9	116.6	92.3
	Mar	75.9	54.4	84.9	66.8
	Apr	69.2	54.3	102.9	72.4
	May	63.2	63.5	123.7	84.4
	June	87.5	58.3	68.0	64.0
	July	93.2	56.7	97.1	73.7
	Aug	78.5	49.1	149.7	86.4
	Sept	86.4	59.0	87.1	71.0
	Oct	79.2	69.3	67.8	69.6
	Nov	72.2	51.7	127.7	79.8
	Dec	64.4	48.9	99.2	67.6
2015	Jan	73.2	29.5	162.5	79.2
	Feb	62.3	35.3	125.3	68.7
	Mar	76.8	32.4	99.0	59.1
	Apr	73.3	29.1	87.4	53.0
	May	80.3	52.0	75.0	62.3
	June	85.5	33.7	133.0	72.4



Monthly Transport Report

Table 2 A: Transport Sector Volumes In Tonnes

Year	Month	Rail cargo	Road cargo	Sea - Landed	Sea - Shipped	Sea - Trans- shipped
2011	Jan	158,313	32,985	230,441	99,705	66,387
	Feb	141,094	34,227	347,382	168,501	68,173
	Mar	169,490	42,462	148,039	89,998	45,408
	Apr	137,624	40,314	222,378	89,309	38,110
	May	147,904	43,146	344,304	75,312	92,104
	June	150,013	45,604	228,433	133,483	59,578
	July	165,678	45,098	238,958	158,883	96,096
	Aug	204,048	48,868	278,304	151,861	115,038
	Sept	202,587	45,127	193,097	57,216	98,890
	Oct	189,969	46,486	341,520	178,950	74,415
	Nov	198,892	46,886	248,056	76,148	195,876
	Dec	131,536	38,169	136,732	111,492	106,282
2012	Jan	175,153	46,711	339,939	49,512	98,176
	Feb	121,321	38,826	324,259	162,313	173,685
	Mar	164,157	43,527	213,228	116,831	84,306
	Apr	146,452	33,851	333,259	94,466	109,665
	May	160,458	35,808	171,140	100,150	108,786
	June	150,651	42,534	349,940	145,318	143,462
	July	161,273	42,620	245,170	169,805	182,051
	Aug	158,337	41,532	322,198	193,698	159,947
	Sept	169,059	45,521	177,298	72,114	96,293
	Oct	187,646	43,905	278,494	143,863	135,477
	Nov	160,101	49,305	232,621	139,030	193,198
	Dec	120,543	39,013	227,104	86,574	157,746
2013	Jan	148,222	41,103	413,210	118,011	187,652
	Feb	119,758	36,449	240,472	168,407	124,496
	Mar	117,597	36,868	175,492	89,104	77,344

Year	Month	Rail cargo	Road cargo	Sea - Landed	Sea - Shipped	Sea - Trans- shipped
	Apr	159,446	39,946	213,901	167,374	67,102
	May	157,193	38,052	162,463	153,733	64,137
	June	150,931	35,613	313,392	84,325	50,850
	July	178,179	35,366	449,476	153,385	53,790
2013	Aug	150,805	37,920	389,125	187,365	89,449
	Sept	166,608	38,925	163,131	54,297	68,486
	Oct	145,087	30,819	208,864	34,403	72,018
	Nov	175,732	28,934	216,077	188,152	48,726
	Dec	118,530	18,859	212,347	72,265	66,073
2014	Jan	115,499	26,988	513,307	69,801	18,899
	Feb	128,862	37,738	282,139	69,319	176,798
	Mar	127,745	25,721	237,985	90,639	56,004
	Apr	116,492	25,677	268,490	116,437	81,263
	May	106,352	29,993	357,048	146,157	57,244
	June	147,180	27,549	119,098	109,368	79,595
	July	156,851	26,798	205,737	149,032	85,204
	Aug	132,008	23,180	541,235	70,489	66,513
	Sept	145,446	27,895	156,353	160,098	78,365
	Oct	133,231	32,729	164,712	65,618	76,873
	Nov	121,528	24,440	386,613	130,395	61,673
	Dec	108,428	23,091	286,505	103,141	59,670
2015	Jan	123,113	13,915	516,350	59,258	160,969
	Feb	104,818	16,663	317,329	183,110	67,442
	Mar	129,198	15,311	244,575	144,868	59,069
	Apr	123,396	13,770	250,816	103,334	42,115
	May	135,100	24,549	230,843	66,697	42,141
	June	143,934	15,902	416,507	104,541	81,658



Monthly Transport Report

Issue 018
17 August 2015

Table 3 A: Transport Sub-sector Index

Year	Month	Rail cargo	Road cargo	Sea - Land	Sea - Ship	Sea - Trans - ship
2011	Jan	94.1	69.8	104.5	94.6	52.2
	Feb	83.9	72.4	157.5	159.9	53.6
	Mar	100.7	89.9	67.1	85.4	35.7
	Apr	81.8	85.3	100.8	84.8	30.0
	May	87.9	91.3	156.1	71.5	72.4
	June	89.2	96.5	103.5	126.7	46.8
	July	98.5	95.5	108.3	150.8	75.6
	Aug	121.3	103.4	126.2	144.1	90.5
	Sept	120.4	95.5	87.5	54.3	77.8
	Oct	112.9	98.4	154.8	169.8	58.5
	Nov	118.2	99.2	112.4	72.3	154.0
	Dec	78.2	80.8	62.0	105.8	83.6
2012	Jan	104.1	98.9	154.1	47.0	77.2
	Feb	72.1	82.2	147.0	154.1	136.6
	Mar	97.6	92.1	96.7	110.9	66.3
	Apr	87.0	71.6	151.1	89.7	86.2
	May	95.4	75.8	77.6	95.1	85.5
	June	89.5	90.0	158.6	137.9	112.8
	July	95.9	90.2	111.1	161.2	143.1
	Aug	94.1	87.9	146.0	183.8	125.8
	Sept	100.5	96.3	80.4	68.4	75.7
	Oct	111.5	92.9	126.2	136.5	106.5
	Nov	95.2	104.4	105.4	132.0	151.9
	Dec	71.6	82.6	102.9	82.2	124.0
2013	Jan	88.1	87.0	187.3	112.0	147.5
	Feb	71.2	77.1	109.0	159.8	97.9
	Mar	69.9	78.0	79.5	84.6	60.8
	Apr	94.8	84.5	97.0	158.9	52.8

Year	Month	Rail cargo	Road cargo	Sea - Land	Sea - Ship	Sea - Trans - ship
2013	May	93.4	80.5	73.6	145.9	50.4
	June	89.7	75.4	142.1	80.0	40.0
	July	105.9	74.9	203.7	145.6	42.3
	Aug	89.6	80.3	176.4	177.8	70.3
	Sept	99.0	82.4	73.9	51.5	53.8
	Oct	86.2	65.2	94.7	32.7	56.6
	Nov	104.4	61.2	97.9	178.6	38.3
	Dec	70.5	39.9	96.3	68.6	52.0
2014	Jan	68.6	57.1	232.7	66.3	14.9
	Feb	76.6	79.9	127.9	65.8	139.0
	Mar	75.9	54.4	107.9	86.0	44.0
	Apr	69.2	54.3	121.7	110.5	63.9
	May	63.2	63.5	161.8	138.7	45.0
	June	87.5	58.3	54.0	103.8	62.6
	July	93.2	56.7	93.3	141.5	67.0
	Aug	78.5	49.1	245.3	66.9	52.3
	Sept	86.4	59.0	70.9	152.0	61.6
	Oct	79.2	69.3	74.7	62.3	60.4
	Nov	72.2	51.7	175.2	123.8	48.5
	Dec	64.4	48.9	129.9	97.9	46.9
2015	Jan	73.2	29.5	234.1	56.2	126.6
	Feb	62.3	35.3	143.8	173.8	53.0
	Mar	76.8	32.4	110.9	137.5	46.4
	Apr	73.3	29.1	113.7	98.1	33.1
	May	80.3	52.0	104.6	63.3	33.1
	June	85.5	33.7	188.8	99.2	64.2



Methodology

The information provided is on rail cargo, road cargo and sea cargo which is comprised of sea landed, sea shipped and sea trans- shipped and the sources of data is Transnamib for road and rail cargo and Namport for sea cargo.

The reference period for the index is 2010, and as for the overall index weights are used in calculations.