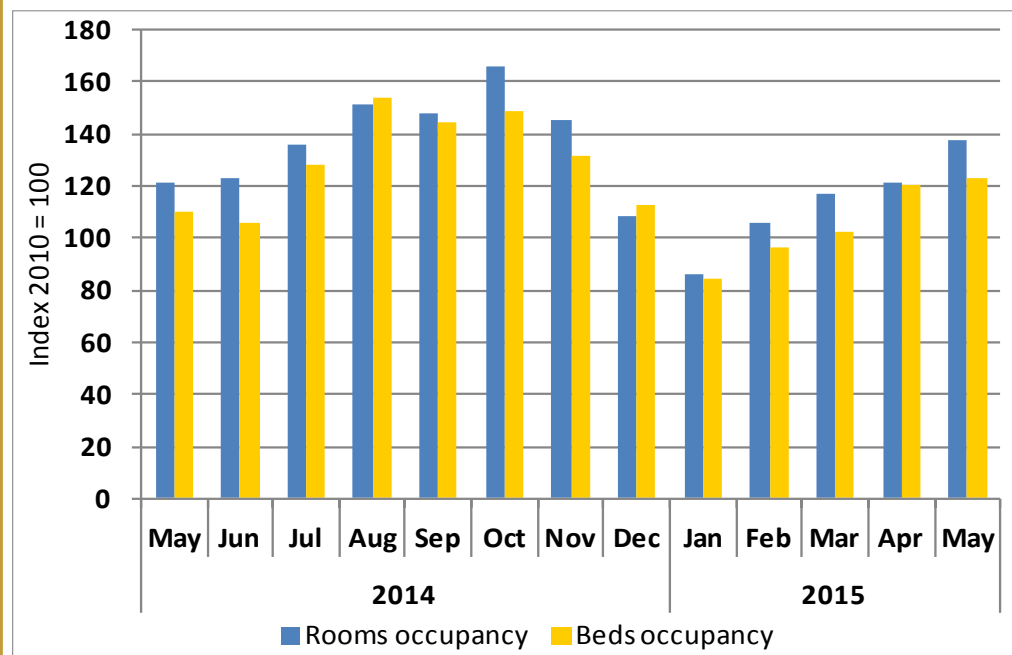


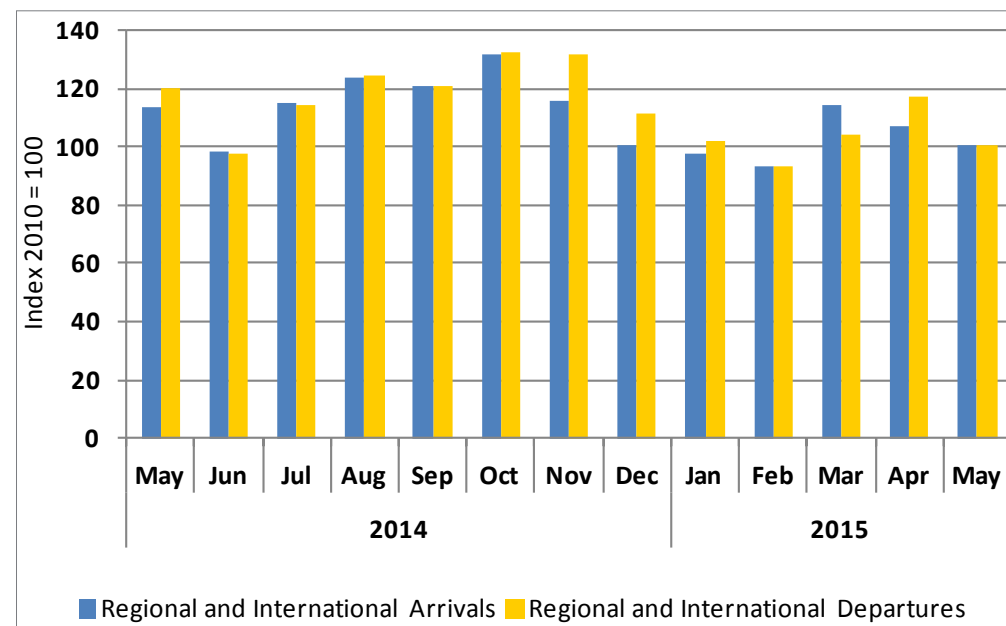


Chart 1: Beds & Rooms Occupancy Indices



- The beds occupancy index for May 2015 stood at 122.7 points compared to 120.4 points in the previous month and 109.7 points in the same month of the preceding year. This represents increases of 1.9 per cent and 11.8 per cent over the month and on an annual basis, respectively.
- The rooms' occupancy index increased to 137.8 points in the month under review from 121.4 points during the previous month. This represents an increase of 13.5 per cent over the month, and a decline of 13.7 per cent over the year.

Chart 2: Regional & International Arrivals and Departures Indices



- The index for regional and international arrivals continued to decline and stood at 100.9 points in May 2015 compared to 106.9 points in the previous month and 113.7 points in the same month of the previous year. This represents declines of 5.7 per cent and 11.3 per cent over the month and over the year, respectively.
- The regional and international departures index also declined in May 2015 registered 100.9 points from 117.3 points one month earlier and 120.1 points on same month of last year. This represents declines of 14.0 per cent when compared to the preceding month and 15.9 per cent on an annual basis.

These serves as a proxy to tourism sector, a priority sector under NDP4 and contributes 1.8 per cent to GDP in 2013 compared to 1.6 per cent in 2012.



Table 1: The indices of regional and International arrivals and departures, and beds and rooms occupancy rates

		Arrivals (reg.&intern.)	Departures (reg.&intern.)	Room occupancy	Bed occupancy			Arrivals (reg.&intern.)	Departures (reg.&intern.)	Room occupancy	Bed occupancy	
2010	Jan	85.1	90.3	63.3	70.9		Oct	133	135	127	116	
	Feb	83.6	81.9	67.7	68.4		Nov	112	122	122	113	
	Mar	107.6	96.5	90.5	90.1		Dec	107	83	91	99	
	Apr	92.7	105.1	106.6	110.6	2013	Jan	96.9	99.5	58.6	57.0	
	May	104.6	98.6	104.4	99.6		Feb	86.2	80.9	85.3	74.9	
	Jun	76.6	82.7	86.9	85.5		Mar	108.3	105.5	92.8	85.9	
	Jul	102.1	86.0	94.2	94.9		Apr	104.4	111.9	98.8	90.5	
	Aug	125.9	127.2	136.9	134.7		May	113.7	114.9	102.9	95.6	
	Sep	116.6	115.3	134.2	132.4		Jun	98.3	97.2	96.0	86.8	
	Oct	116.8	118.5	127.8	129.6		Jul	117.4	106.6	107.8	104.5	
	Nov	97.3	103.9	116.0	107.5		Aug	116.6	126.9	123.0	138.8	
	Dec	91.1	93.9	71.5	75.9		Sep	124.7	123.1	133.2	118.8	
2011	Jan	87.9	89.3	53.5	55.9		Oct	123.5	123.8	134.6	131.3	
	Feb	87.4	84.5	68.4	61.5		Nov	123.1	133.0	127.5	115.2	
	Mar	101.9	98.6	68.7	68.8		Dec	98.5	106.6	88.1	88.8	
	Apr	110.9	114.0	78.8	100.5	2014	Jan	96.4	93.1	79.2	77.6	
	May	100.2	105.4	77.1	85.0		Feb	96.2	93.4	101.1	85.9	
	Jun	92.3	92.3	76.5	77.7		Mar	112.7	107.1	115.3	101.9	
	Jul	123.1	109.4	87.8	98.8		Apr	121.8	130.6	142.8	114.6	
	Aug	122.2	133.7	80.0	116.4		May	113.7	120.1	124.9	118.5	
	Sep	117.8	119.9	98.3	101.0		Jun	98.7	97.9	125.5	106.2	
	Oct	134.5	129.8	110.1	122.5		Jul	114.8	114.1	141.4	142.4	
	Nov	113.2	127.7	98.2	108.3		Aug	123.8	124.8	155.0	157.1	
	Dec	110.1	114.6	72.7	79.3		Sep	120.8	120.9	147.9	144.4	
2012	Jan	95.5	108.2	59.4	60.4		Oct	132.0	132.8	165.6	148.9	
	Feb	95.4	94.0	81.0	71.0		Nov	115.6	131.9	145.5	131.7	
	Mar	113.2	109.2	85.5	77.0		Dec	100.9	111.8	108.0	112.9	
	Apr	119.9	127.6	99.0	97.0	2015	Jan	97.7	101.7	87.6	85.4	
	May	114.6	113.7	94.9	89.3		Feb	93.0	93.4	106.3	93.5	
	Jun	108.0	107.3	89.7	82.4		Mar	114.0	103.9	117.2	99.5	
	Jul	135.5	126.6	105.5	101.9		Apr	106.9	117.3	126.0	125.2	
	Aug	146	153	132	127		May	100.9	100.9	137.8	122.7	
	Sep	134	132	127	117							

These serves as a proxy to tourism sector, a priority sector under NDP4 and contributes 1.8 per cent to GDP in 2013 compared to 1.6 per cent in 2012.



Methodology

Background	The room and bed occupancy indices and the arrivals and departures indices serves as a proxy to tourism sector, a priority sector under NDP4.
Data sources	Namibia Airport Company and Hospitality Association of Namibia.
Base year	2010

These serves as a proxy to tourism sector, a priority sector under NDP4 and contributes 1.8 per cent to GDP in 2013 compared to 1.6 per cent in 2012.