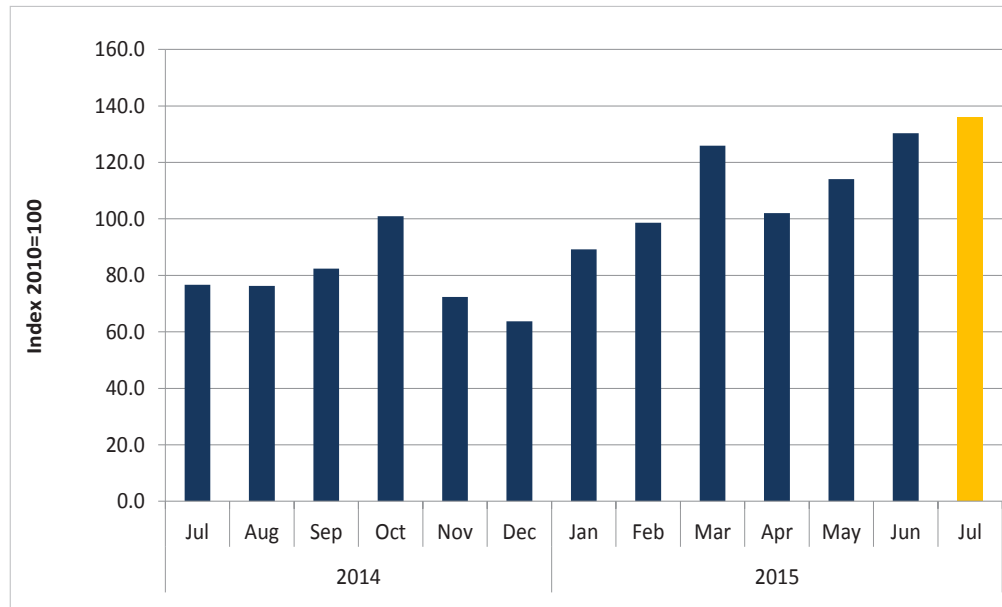


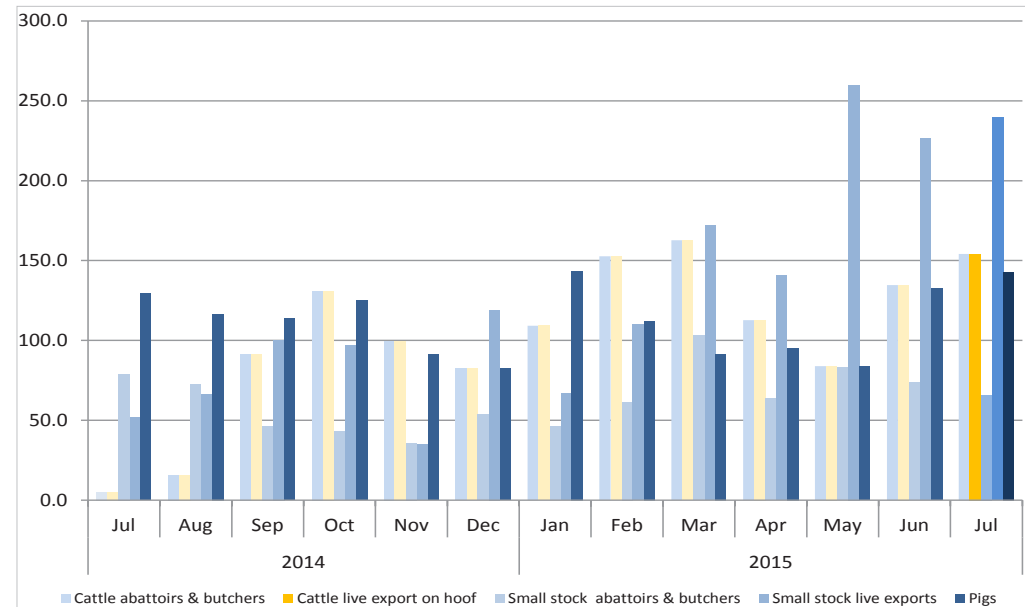


**Chart 1: Livestock marketed index (respective month 2010 = 100)**

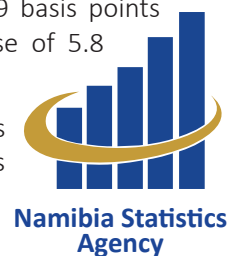


- The livestock marketed composite index recorded an index of 136.0 basis points in July 2015 as compared to 130.4 basis points registered in June 2015 (Chart 1). This represents an increase of 4.3 percent m/m and 77.3 percent y/y.
- In absolute terms, the number of livestock marketed, recorded a total of 168,591 in July 2015.
- The result presented in chart 2 showed that cattle abattoirs and butchers index decreases when compared to the preceding month, recording 137.0 points in July 2015 when compared to 137.5 basis points registered in June 2015. This represents a de-crease of 0.3 percent m/m and a decline of 0.5 percent y/y.

**Chart 2: Livestock Marketed Sub-Sector Index**



- The July 2015 index for cattle exported on hoof increased by 19.4 basis points over the month recording 154.1 basis points compared to the preceding month. This represents an increase of 14.5 percent m/m and a massive increase of 29.6 percent on a yearly basis.
- The small stock abattoirs and butchers index stood at 65.9 basis points in July 2015 compared to 73.7 basis points in the preceding month. This represents a decline of 10.2 percent m/m and 16.5 percent y/y.
- The index for small stock live export increases by 13.2 basis points over the month recording 239.7 basis points in July 2015 compared to 259.9 basis points recorded in the previous month. This represents an increase of 5.8 percent m/m and an increase of 3.6 percent y/y.
- The index for pigs increased in July 2015 to 142.7 basis points from 132.6 points reported in the previous month. This represents an increase of 7.7 percent m/m and 10.4 percent y/y.





# Monthly Livestock Report

Issue 019  
13 October 2015

**Table 1: Number of Livestock marketed**

		Cattle		Small stock		Pigs	Weighted index
		Export	Live	Export	Live		
2010	Jan	9	11	47	11	3	80
	Feb	8	11	78	23	3	124
	Mar	13	16	105	44	4	182
	Apr	19	12	114	35	4	185
	May	17	6	65	12	3	103
	June	18	17	105	41	3	183
	July	18	22	80	47	3	170
	Aug	12	24	69	37	3	145
	Sept	8	22	55	37	3	125
	Oct	10	19	52	31	4	115
	Nov	10	21	58	20	2	111
	Dec	6	13	75	30	1	124
2011	Jan	9	14	43	16	3	84
	Feb	8	18	75	15	4	120
	Mar	13	19	110	26	4	172
	Apr	19	14	78	27	4	143
	May	17	17	89	40	3	166
	June	18	16	76	31	3	143
	July	18	21	71	38	3	150
	Aug	12	21	43	26	3	104
	Sept	8	15	35	24	3	85
	Oct	10	20	36	27	4	96
	Nov	10	15	49	18	2	94
	Dec	6	10	73	32	1	122
2012	Jan	7	10	49	14	3	83
	Feb	8	7	77	20	3	115
	Mar	14	9	97	33	3	155
	Apr	16	7	90	27	6	146
	May	15	6	88	31	3	143
	June	17	9	83	37	3	149
	July	20	11	80	35	3	149
	Aug	12	18	62	31	1	124
	Sept	8	14	63	32	4	121
	Oct	11	17	38	30	5	103

		Cattle		Small stock		Pigs	Weighted index
		Export	Live	Export	Live		
	Nov	9	18	62	20	1	110
	Dec	6	8	55	29	1	99
2013	Jan	10	11	61	14	4	100
	Feb	10	19	95	19	3	146
	Mar	10	28	124	38	3	202
	Apr	16	25	94	53	3	191
	May	22	25	93	46	4	190
	June	19	26	78	65	3	191
	July	12	33	73	38	2	159
	Aug	12	31	73	46	3	165
	Sept	12	24	61	38	4	138
	Oct	11	20	62	30	4	126
	Nov	13	18	64	29	4	128
	Dec	6	10	51	40	4	111
2014	Jan	5	7	47	20	4	84
	Feb	7	7	58	40	4	116
	Mar	10	10	78	50	3	151
	Apr	11	10	74	70	3	168
	May	18	0	80	5	3	107
	June	18	0	70	13	4	106
	July	17	1	59	16	4	97
	Aug	16	3	55	20	3	96
	Sept	11	15	35	31	3	95
	Oct	13	21	32	30	4	100
	Nov	10	16	27	11	3	66
	Dec	5	13	40	36	2	97
2015	Jan	12	18	35	20	4	89
	Feb	9	25	46	34	3	116
	Mar	12	26	78	53	3	171
	Apr	13	18	48	43	3	125
	May	15	14	63	79	2	173
	June	17	22	55	69	4	167
	July	17	25	50	73	4	169



**Table 2: Composite Index of Livestock marketed**

		Cattle		Small stock		Pigs	Weighted index
		Export	Live	Export	Live		
2010	Jan	71.1	65.2	62.4	34.7	108.4	65.6
	Feb	65.4	69.7	104.2	75.1	116.5	78.0
	Mar	104.4	99.5	139.6	143.9	136.2	115.3
	Apr	158.1	75.0	151.7	115.6	123.8	126.4
	May	139.4	36.0	86.8	39.8	87.9	85.8
	June	145.3	104.9	139.2	134.5	90.9	128.6
	July	145.1	138.8	105.9	153.5	95.8	133.5
	Aug	97.5	150.1	91.6	119.7	110.1	114.6
	Sept	62.3	136.8	73.3	120.4	100.6	93.9
	Oct	80.9	115.9	68.7	100.6	118.6	92.1
	Nov	83.6	129.1	77.4	64.8	62.6	93.6
	Dec	47.1	79.1	99.2	97.5	48.6	72.7
2011	Jan	71.1	86.3	57.0	51.2	109.5	72.3
	Feb	65.4	113.5	99.1	49.6	117.7	88.0
	Mar	104.4	117.2	145.8	86.2	137.6	117.0
	Apr	158.1	88.4	103.8	89.0	125.0	117.7
	May	139.4	106.2	117.9	131.1	88.8	122.0
	June	145.3	98.9	100.5	101.8	91.8	115.6
	July	145.1	127.0	94.3	124.4	96.7	124.8
	Aug	97.5	127.1	56.6	83.6	111.2	96.9
	Sept	62.3	94.9	46.9	77.6	101.6	71.7
	Oct	80.9	124.2	47.2	88.2	119.8	88.8
	Nov	83.6	94.9	65.2	58.3	63.2	80.0
	Dec	47.1	64.6	97.1	103.8	49.1	68.4
2012	Jan	55.2	61.9	65.3	46.5	103.5	60.5
	Feb	62.0	45.4	101.8	65.3	100.8	67.5
	Mar	113.4	55.1	128.2	106.6	105.2	98.0
	Apr	136.1	42.8	119.3	88.2	187.9	101.9
	May	121.0	39.3	116.9	100.4	100.2	92.7
	June	141.6	54.6	110.8	121.5	84.8	104.5
	July	165.3	69.4	106.4	114.5	100.5	116.4
	Aug	99.5	109.4	82.8	100.4	34.7	96.4
	Sept	67.7	85.2	83.9	105.5	128.0	82.2
	Oct	91.9	107.5	50.9	99.4	182.6	91.9

		Cattle		Small stock		Pigs	Weighted index
		Export	Live	Export	Live		
2013	Nov	76.1	109.2	82.2	66.1	39.7	85.2
	Dec	48.2	48.7	72.9	95.6	36.5	57.5
	Jan	80.9	70.0	80.3	46.2	127.4	76.2
	Feb	79.4	119.1	125.9	62.6	92.2	100.6
	Mar	83.2	171.3	164.0	124.5	92.2	131.5
	Apr	135.8	153.9	124.9	172.0	103.1	140.9
	May	184.0	154.9	123.3	150.7	119.8	156.5
	June	157.0	161.1	103.1	214.3	94.6	149.2
	July	103.1	203.1	96.9	125.8	61.2	132.5
	Aug	98.9	193.0	97.0	149.1	102.2	131.6
	Sept	99.2	145.7	81.2	123.0	123.3	112.4
	Oct	87.2	124.6	82.0	97.8	137.7	100.3
2014	Nov	110.2	112.3	84.9	93.8	134.3	104.8
	Dec	48.8	64.0	67.8	130.1	124.6	67.7
	Jan	43.7	44.1	62.8	65.5	135.7	53.5
	Feb	60.7	44.3	77.6	129.7	119.7	67.8
	Mar	83.5	60.8	103.4	162.6	104.9	88.8
	Apr	93.4	59.1	97.7	230.2	100.1	96.3
	May	149.0	2.2	105.8	17.7	114.6	82.1
	June	151.4	1.5	93.2	41.9	140.0	83.1
	July	137.7	5.0	78.9	51.7	129.2	76.7
	Aug	128.9	15.8	72.5	65.9	116.5	76.2
	Sept	88.9	91.6	46.4	100.1	113.6	82.4
	Oct	109.3	130.9	43.1	97.0	125.0	100.9
2015	Nov	78.9	99.6	35.8	35.0	91.0	72.3
	Dec	37.9	82.3	53.5	119.0	82.6	63.7
	Jan	98.4	109.2	45.8	66.8	143.3	89.2
	Feb	70.7	152.7	61.4	110.0	112.2	99.8
	Mar	100.6	162.6	103.2	172.0	91.4	126.0
	Apr	112.6	63.7	140.8	95.2	102.1	102.1
	May	126.3	83.8	83.0	259.9	83.5	114.1
	June	137.5	134.6	73.7	226.5	132.6	130.4
	July	137.0	154.1	65.9	239.7	142.7	136.0



## Methodology

**Background:** The livestock subsector contributed 1.5 per cent to the Gross Domestic Product. Livestock subsector growth declined by 39.2 per cent in 2013. Data collected for monthly sectoral reports are monthly number of livestock marketed for Live exports to South Africa and Angola for cattle, goats and sheep, Export to abattoirs and butchers (cattle, goats and sheep), and pigs and milk production per hectolitres. The index is a magnitude of the volume changes over time, with reference to the volume of the base year 2010. Index is calculated as a ratio of a volume of a specific component in a specific month to the total volume of that component in 2010.

**Data Sources:** Meat Board of Namibia and Namibia Agricultural Union

**Base year:** 2010