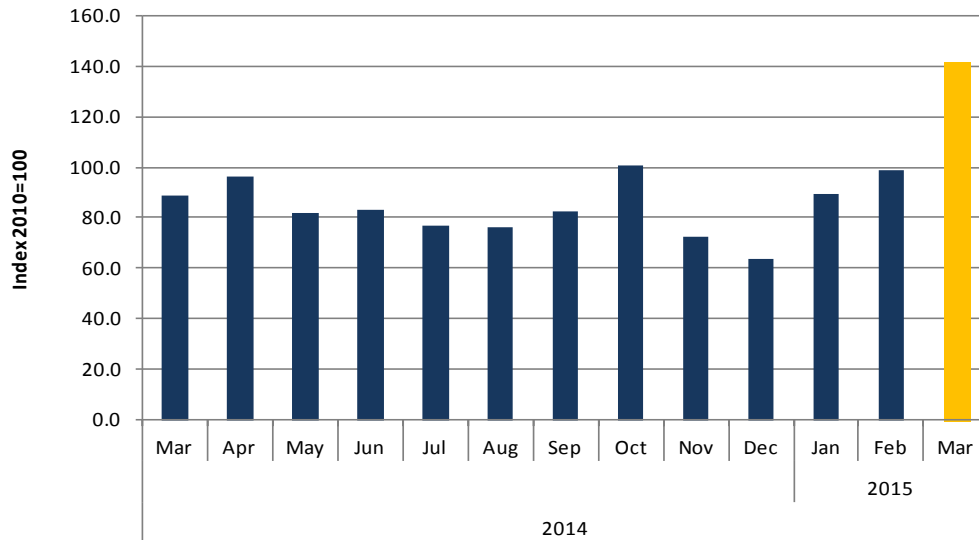


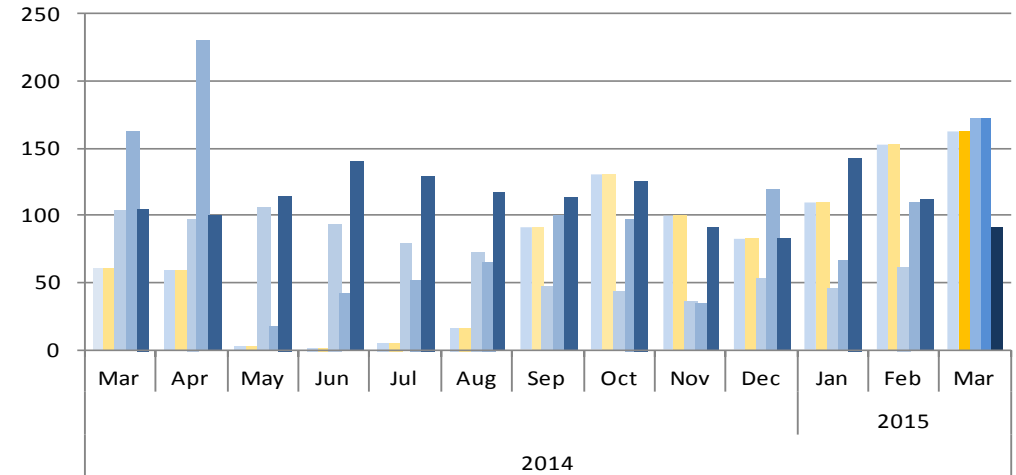


Chart 1 Livestock marketed index (respective month 2010 = 100)

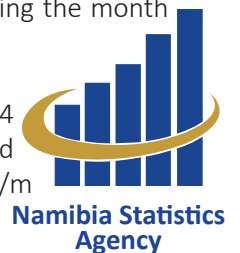


- The livestock marketed composite index for March 2015 stood at 141.1 points when compared to 98.6 points recorded in February 2014, representing an increase of 58.9 per cent y/y and an in-crease of 43.1 per cent m/m.
- The index continued with an upward trend, recording the highest index since January 2015. Due to the poor rainfalls experience in some part of the country in 2015, the farmers followed the advice from the Ministry of Agriculture to de-stock as an easing measure to counter the impact of a possible drought.
- In absolute terms, number of livestock marketed recorded a total of 223,959 in March 2015, an increase of 92.3 per cent m/m and an increase of 48.7 per cent on when compared to the march 2014.
- (Chart 2) The cattle abattoirs and butchers index stood at 100.6 points a massive increased with 42.2 percent month-on month whereas a double digits increase of 120.5 percent on a yearly basis.

Chart 2: Livestock Marketed Sub-Sector Index



- At the same point, the cattle exported on hoof index stood at 162.6 basis points during February 2015, increased by 6.5 basis points. This is a marginal increase of 6.5 percent as compared to February 2015, While a huge increase of 167.3 percent when compared to March 2014.
- The small stock abattoirs and butchers index extremely increased to 172.8 basis points during the month under review, this is an in-crease of 111.4 basis points when compared to the previous month. This is a representation of 181.3 per cent on monthly basis and a strong increase of 67.1 per cent as compared to March 2014.
- The small stock on hoof index stood at 172.0 points March 2015. This represents a strong increase of 56.4 per cent m/m and a minimal increase of 5.28 per cent when compared to March 2015. Despite the increase witnessed in the index of the on hoof exports, there was no sheep exported to Angola during the month under review.
- The index for Pigs declined in March 2015 to a record 91.4 basis points when compared to 112.2 basis point recorded in February 2015, representing a decline 18.5 per cent on m/m basis and 12.8 per cent on a year-on year basis.





Monthly Livestock Report

Issue 015
18 May 2015

Table1: Number of Livestock marketed

		Cattle		Small stock		Pigs	Total
		Export	Live	Export	Live		
2010	Jan	9	11	47	11	3	80
	Feb	8	11	78	23	3	124
	Mar	13	16	105	44	4	182
	Apr	19	12	114	35	4	185
	May	17	6	65	12	3	103
	Jun	18	17	105	41	3	183
	Jul	18	22	80	47	3	170
	Aug	12	24	69	37	3	145
	Sept	8	22	55	37	3	125
	Oct	10	19	52	31	4	115
	Nov	10	21	58	20	2	111
	Dec	6	13	75	30	1	124
2011	Jan	7	14	43	16	3	82
	Feb	8	18	75	15	4	119
	Mar	14	19	110	26	4	173
	Apr	16	14	78	27	4	140
	May	15	17	89	40	3	163
	Jun	17	16	76	31	3	143
	Jul	20	21	71	38	3	152
	Aug	12	21	43	26	3	104
	Sept	8	15	35	24	3	86
	Oct	11	20	36	27	4	97
	Nov	9	15	49	18	2	93
	Dec	6	10	73	32	1	123
2012	Jan	10	10	49	14	3	86
	Feb	10	7	77	20	3	117
	Mar	10	9	97	33	3	151
	Apr	11	7	90	27	6	141
	May	11	6	88	31	3	139
	Jun	13	9	83	37	3	145
	Jul	9	11	80	35	3	138
	Aug	7	18	62	31	1	119

		Cattle		Small stock		Pigs	Total
		Export	Live	Export	Live		
	Sept	6	14	63	32	4	119
	Oct	15	17	38	30	5	106
	Nov	17	18	62	20	1	118
	Dec	8	8	55	29	1	101
2013	Jan	13	13	61	14	4	105
	Feb	9	18	95	19	3	144
	Mar	16	27	124	38	3	207
	Apr	16	27	94	53	3	193
	May	22	26	93	46	4	190
	Jun	19	26	78	65	3	191
	Jul	12	33	73	38	2	159
	Aug	12	28	73	46	3	162
	Sept	12	25	61	38	4	139
	Oct	11	20	62	30	4	126
	Nov	13	18	64	29	4	128
	Dec	6	10	53	40	4	112
2014	Jan	5	7	47	20	4	84
	Feb	7	7	58	40	4	116
	Mar	10	10	78	50	3	151
	Apr	11	10	74	70	3	168
	May	18	0	80	5	3	107
	Jun	18	0	70	13	4	106
	Jul	17	1	59	16	4	97
	Aug	16	3	55	20	3	96
	Sept	11	15	35	31	3	95
	Oct	13	21	32	30	4	100
	Nov	10	16	27	11	3	66
	Dec	5	13	40	36	2	97
2015	Jan	12	18	35	20	4	89
	Feb	9	25	46	34	3	116
	Mar	12	26	130	53	3	116



Table 2: Composite Index of Livestock marketed

		Cattle		Small stock		Pigs	Weighted index
		Export	Live	Export	Live		
2010	Jan	71.1	65.2	62.4	34.7	108.4	65.6
	Feb	65.4	69.7	104.2	75.1	116.5	78.0
	Mar	104.4	99.5	139.6	143.9	136.2	115.3
	Apr	158.1	75.0	151.7	115.6	123.8	126.4
	May	139.4	36.0	86.8	39.8	87.9	85.8
	Jun	145.3	104.9	139.2	134.5	90.9	128.6
	Jul	145.1	138.8	105.9	153.5	95.8	133.5
	Aug	97.5	150.1	91.6	119.7	110.1	114.6
	Sept	62.3	136.8	73.3	120.4	100.6	93.9
	Oct	80.9	115.9	68.7	100.6	118.6	92.1
	Nov	83.6	129.1	77.4	64.8	62.6	93.6
	Dec	47.1	79.1	99.2	97.5	48.6	72.7
2011	Jan	71.1	86.3	57.0	51.2	109.5	72.3
	Feb	65.4	113.5	99.1	49.6	117.7	88.0
	Mar	104.4	117.2	145.8	86.2	137.6	117.0
	Apr	158.1	88.4	103.8	89.0	125.0	117.7
	May	139.4	106.2	117.9	131.1	88.8	122.0
	Jun	145.3	98.9	100.5	101.8	91.8	115.6
	Jul	145.1	127.0	94.3	124.4	96.7	124.8
	Aug	97.5	127.1	56.6	83.6	111.2	96.9
	Sept	62.3	94.9	46.9	77.6	101.6	71.7
	Oct	80.9	124.2	47.2	88.2	119.8	88.8
	Nov	83.6	94.9	65.2	58.3	63.2	80.0
	Dec	47.1	64.6	97.1	103.8	49.1	68.4
2012	Jan	55.2	61.9	65.3	46.5		60.5
	Feb	62.0	45.4	101.8	65.3	100.8	67.5
	Mar	113.4	55.1	128.2	106.6	105.2	98.0
	Apr	136.1	42.8	119.3	88.2	187.9	101.9
	May	121.0	39.3	116.9	100.4	100.2	92.7
	Jun	141.6	54.6	110.8	121.5	84.8	104.5
	Jul	165.3	69.4	106.4	114.5	100.5	116.4
	Aug	99.5	109.4	82.8	100.4	34.7	96.4

		Cattle		Small stock		Pigs	Weighted index
		Export	Live	Export	Live		
2013	Sept	67.7	85.2	83.9	105.5	128.0	82.2
	Oct	91.9	107.5	50.9	99.4	182.6	91.9
	Nov	76.1	109.2	82.2	66.1	39.7	85.2
	Dec	48.2	48.7	72.9	95.6	36.5	57.5
	Jan	80.9	70.0	80.3	46.2	127.4	76.2
	Feb	79.4	119.1	125.9	62.6	92.2	100.6
	Mar	83.2	171.3	164.0	124.5	92.2	131.5
	Apr	135.8	153.9	124.9	172.0	103.1	140.9
	May	184.0	154.9	123.3	150.7	119.8	156.5
	Jun	157.0	161.1	103.1	214.3	94.6	149.2
	Jul	103.1	203.1	96.9	125.8	61.2	132.5
	Aug	98.9	193.0	97.0	149.1	102.2	131.6
2014	Sept	99.2	145.7	81.2	123.0	123.3	112.4
	Oct	87.2	124.6	82.0	97.8	137.7	100.3
	Nov	110.2	112.3	84.9	93.8	134.3	104.8
	Dec	48.8	64.0	67.8	130.1	124.6	67.7
	Jan	43.7	44.1	62.8	65.5	135.7	53.5
	Feb	60.7	44.3	77.6	129.7	119.7	67.8
	Mar	83.5	60.8	103.4	162.6	104.9	88.8
	Apr	93.4	59.1	97.7	230.2	100.1	96.3
	May	149.0	2.2	105.8	17.7	114.6	82.1
	Jun	151.4	1.5	93.2	41.9	140.0	83.1
	Jul	137.7	5.0	78.9	51.7	129.2	76.7
	Aug	128.9	15.8	72.5	65.9	116.5	76.2
2015	Sept	88.9	91.6	46.4	100.1	113.6	82.4
	Oct	109.3	130.9	43.1	97.0	125.0	100.9
	Nov	78.9	99.6	35.8	35.0	91.0	72.3
	Dec	37.9	82.3	53.5	119.0	82.6	63.7
	Jan	98.4	109.2	45.8	66.8	143.3	89.2
Feb	70.7	152.7	61.4	110.0	112.2	99.8	
Mar	100.6	162.6	172.8	172.0	91.4	141.1	



Methodology

Data Sources

The livestock subsector contributed 1.5 per cent to the Gross Domestic Product. Livestock subsector growth declined by 39.2 per cent in 2013. The data are obtained from the Meat board of Namibia and Agricultural Union of Namibia, data collected for monthly sectoral reports are monthly number of livestock marketed for: Live export to South Africa and Angola for both cattle, goat and sheep, Export to abattoirs and butchers (Cattle, goats and sheep), and pigs and Milk production per hectare litres.

Base year

Livestock sectoral report is harmonised with the quarterly and annual national accounts base year 2010.

Calculations of index

The index is calculated based on the 2010 base year volumes and 2010 weights. The index is a magnitude of the volume changes over time, with reference to the volume of the base year 2010. Index is calculated as a ratio of a volume of a specific component in a specific month to the total volume of that component in 2010.