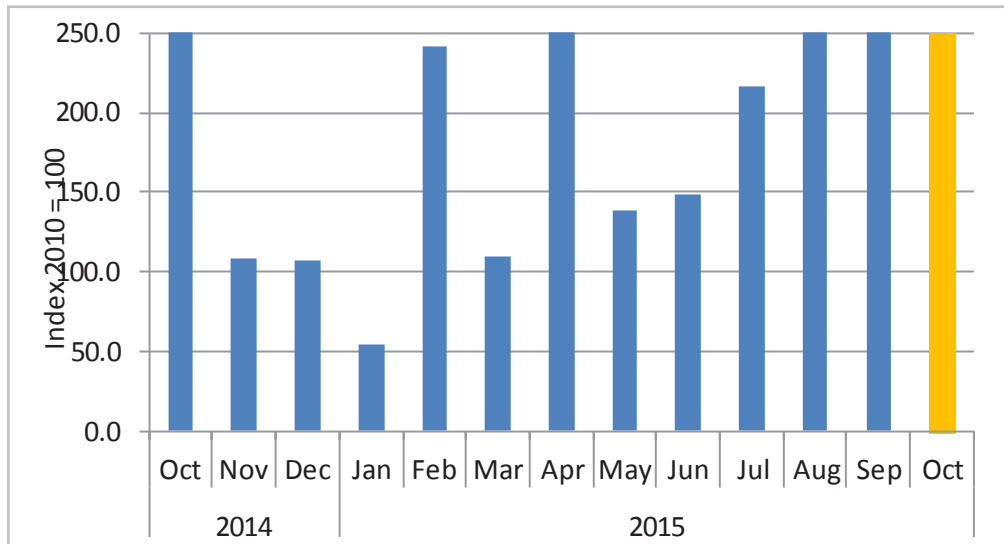
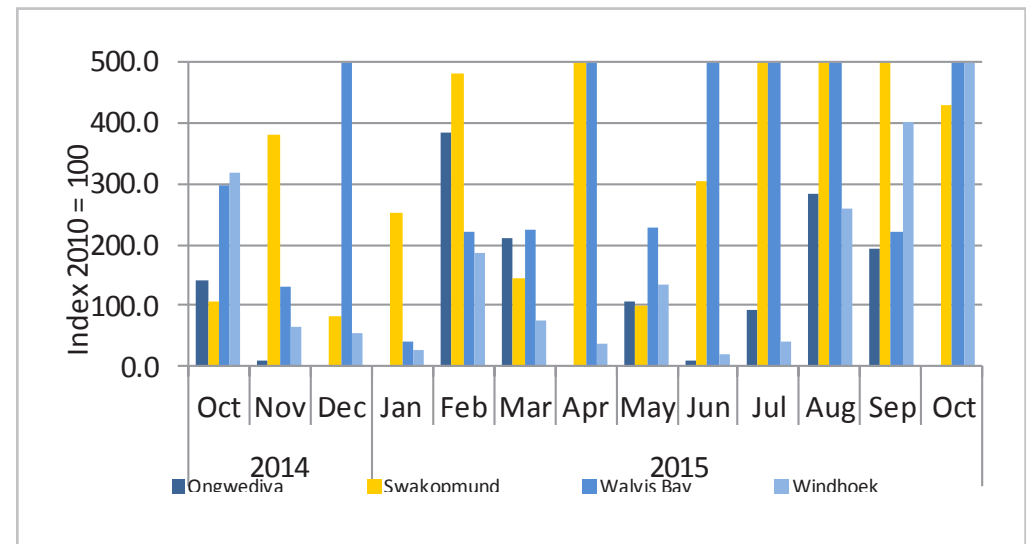


**Chart 1: Buildings completed index**



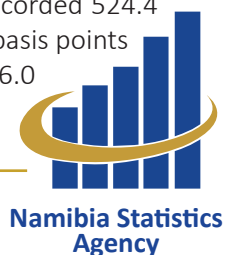
- The Composite “Buildings Completed” Index for October increased to 745.9 basis points from 393.5 basis points recorded in the preceding month. This represents an increase of 89.6 percent m/m and an increase of 169.1 percent y/y.
- The major contributor to m/m increase was the category Flats that increased by 238.6 percent in nominal value.
- In value terms, buildings completed during the period of January to October 2015 amounted to N\$ 1 515 million compared to N\$ 948 million recorded during the same period of 2014.

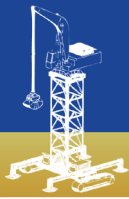
**Chart 2: Buildings completed indices for selected towns**



- **Windhoek** Municipality’s “Buildings Completed” Index recorded an index of 912.1 basis points in October 2015 from a 400.7 points recorded in the preceding month. This represents an increase of 127.7 percent m/m and 185.7 percent y/y.
- **Swakopmund** Municipality’s “Buildings Completed” Index recorded an index of 430.7 basis points in October 2015, a decrease from 605.9 basis points recorded in September 2015. This represents a decrease of 28.9 percent m/m and an increase of 307.9 percent y/y.
- **Ongwediva** Town Council reported that there were no building plans completed for the month of October 2015.
- **Walvis Bay** Municipality’s “Buildings Completed” index has recorded 524.4 basis points in October 2015 which is an increase from 222.2 basis points recorded in September 2015. This represents increases of 136.0 percent m/m and 75.9 percent y/y.

The composite buildings completed index in July and October 2014 and April 2015 exceeded the limited and stood at 316.4 basis point, 277.2 basis points and 425.8 basis points. While building completed indices for Walvis Bay in September and December 2014 and April and June 2015 exceeded the limited and stood at 521.1 basis points, 560.6 basis points 3080.8 basis points and 889.6 basis points, respectively. Swakopmund building completed index for April 2015 also exceed the limit and stood at 574.2 points. In order to improve readability, we have limited the index scale to 250 basis points and 500 basis points.





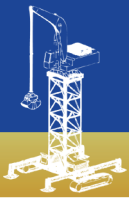
# Monthly Building Plans Report

**Table 1: Indices of buildings completed**

Year	Month	Ongwediva	Swakopmund	Walvis Bay	Windhoek	Composite index
2010	Jan	10.2	32.7	214.0	29.2	47.9
	Feb	49.0	81.6	58.1	148.6	123.5
	Mar	31.3	110.1	44.2	90.2	83.7
	Apr	33.0	51.7	76.7	97.6	85.0
	May	66.1	109.4	111.4	99.1	99.5
	June	35.5	77.3	95.7	148.0	125.6
	July	646.9	81.1	93.2	143.5	165.3
	Aug	82.5	109.7	40.8	69.7	72.7
	Sept	72.2	185.0	35.1	126.7	120.7
	Oct	80.9	72.0	211.5	86.4	97.4
	Nov	25.4	169.5	101.7	87.5	95.2
	Dec	67.0	119.8	117.5	73.5	83.6
2011	Jan	-	38.5	205.9	52.9	63.6
	Feb	39.7	142.6	48.5	60.7	68.4
	Mar	44.7	114.4	30.6	93.0	85.8
	Apr	80.3	55.0	261.1	199.9	179.5
	May	-	122.2	114.7	69.7	76.3
	June	24.0	144.8	119.1	183.5	160.7
	July	91.1	63.0	87.6	146.4	125.7
	Aug	69.4	295.6	149.1	162.5	171.6
	Sept	101.8	180.5	112.1	280.9	237.7
	Oct	34.1	130.7	21.2	45.7	53.2
	Nov	18.0	138.0	356.2	66.4	102.8
	Dec	62.6	271.2	40.6	81.4	100.1
2012	Jan	40.9	14.5	66.9	28.4	31.6
	Feb	-	170.4	53.5	194.1	162.7
	Mar	85.5	95.1	46.7	54.8	61.2
	Apr	-	120.8	62.9	286.3	221.6
	May	87.1	151.9	66.2	175.3	154.6
	June	152.1	115.4	281.6	292.7	259.1
	July	-	317.8	117.8	96.2	120.1
	Aug	107.3	271.3	251.1	76.6	122.1
	Sept	40.3	319.9	147.6	87.3	120.1
	Oct	150.8	353.3	328.8	234.7	253.9
	Nov	-	279.7	246.4	99.8	131.3

Year	Month	Ongwediva	Swakopmund	Walvis Bay	Windhoek	Composite index
	Dec	-	193.4	280.0	42.4	83.9
2013	Jan	471.9	25.3	309.0	49.0	102.9
	Feb	62.3	109.7	250.5	107.2	119.5
	Mar	36.4	158.7	90.6	207.3	176.8
	Apr	135.2	147.0	127.9	118.8	124.5
	May	36.0	90.2	133.9	188.6	159.6
	June	31.7	133.3	217.2	139.9	139.7
	July	-	117.1	92.4	90.1	87.5
	Aug	841.4	150.8	85.5	72.1	137.3
	Sept	65.9	148.5	154.0	43.6	70.2
	Oct	15.5	150.3	92.8	112.3	108.4
	Nov	138.7	286.7	180.9	36.1	90.6
	Dec	56.6	203.1	285.9	29.0	80.3
2014	Jan	46.4	62.2	37.1	78.4	69.7
	Feb	49.1	145.8	71.8	165.7	145.1
	Mar	176.9	178.6	220.7	54.1	96.2
	Apr	55.1	56.2	93.4	57.6	61.0
	May	167.7	98.7	415.9	96.5	135.5
	June	162.2	164.0	307.1	57.3	104.7
	July	84.6	107.4	117.9	408.1	316.4
	Aug	174.8	442.5	173.5	95.6	153.7
	Sept	15.0	170.9	521.1	81.6	134.8
	Oct	140.6	105.6	298.2	319.2	277.2
	Nov	10.4	381.9	132.4	65.0	108.8
	Dec	0.0	81.6	560.6	54.2	107.5
2015	Jan	0.0	250.9	40.7	25.3	54.0
	Feb	385.0	482.1	220.6	187.1	242.2
	Mar	212.0	145.1	224.5	75.2	109.4
	Apr	-	574.2	3,080.8	38.3	425.8
	May	106.6	98.7	228.8	135.0	138.3
	June	8.5	305.9	889.6	21.3	148.6
	July	91.4	565.0	1039.1	39.7	216.1
	Aug	282.8	772.0	512.9	260.1	353.9
	Sept	192.3	605.9	222.2	400.7	393.5
	Oct	0.0	430.7	524.4	912.1	745.9

The composite buildings completed index in July and October 2014 and April 2015 exceeded the limited and stood at 316.4 basis point, 277.2 basis points and 425.8 basis points. While building completed indices for Walvis Bay in September and December 2014 and April and June 2015 exceeded the limited and stood at 521.1 basis points, 560.6 basis points 3080.8 basis points and 889.6 basis points, respectively. Swakopmund building completed index for April 2015 also exceeded the limit and stood at 574.2 points. In order to improve readability, we have limited the index scale to 250 basis points and 500 basis points.



## Methodology

**Data Sources:** Selected local authorities

**Base year:** 2010

**Calculations of index:** The NSA monitors the value and number of buildings completed for 24 local authorities on a monthly basis. Four of these towns that accounted for 92 percent of the total values of all buildings completed in 2010 have been selected for the index compilation.

The composite buildings completed index in July and October 2014 and April 2015 exceeded the limited and stood at 316.4 basis point, 277.2 basis points and 425.8 basis points. While building completed indices for Walvis Bay in September and December 2014 and April and June 2015 exceeded the limited and stood at 521.1 basis points, 560.6 basis points 3080.8 basis points and 889.6 basis points, respectively. Swakopmund building completed index for April 2015 also exceed the limit and stood at 574.2 points. In order to improve readability, we have limited the index scale to 250 basis points and 500 basis points.