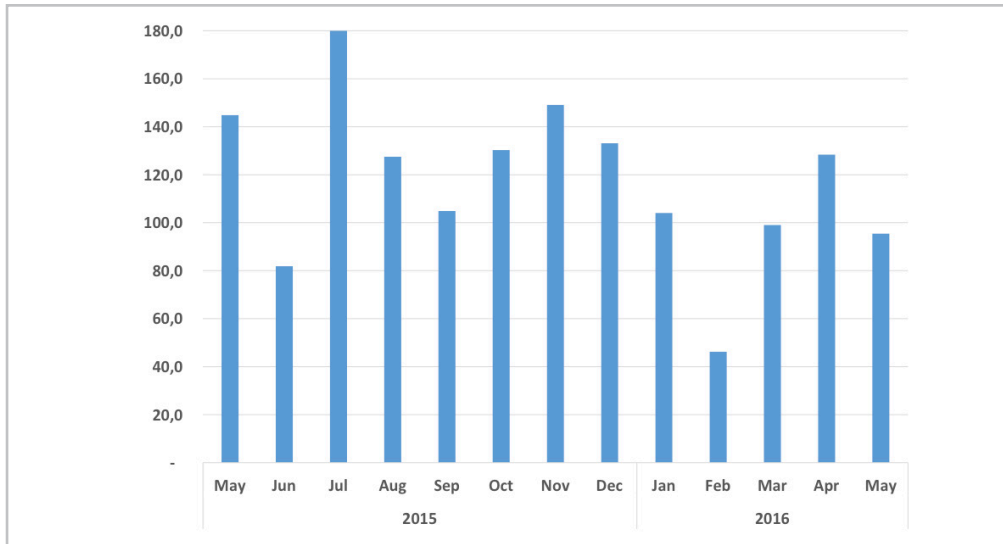
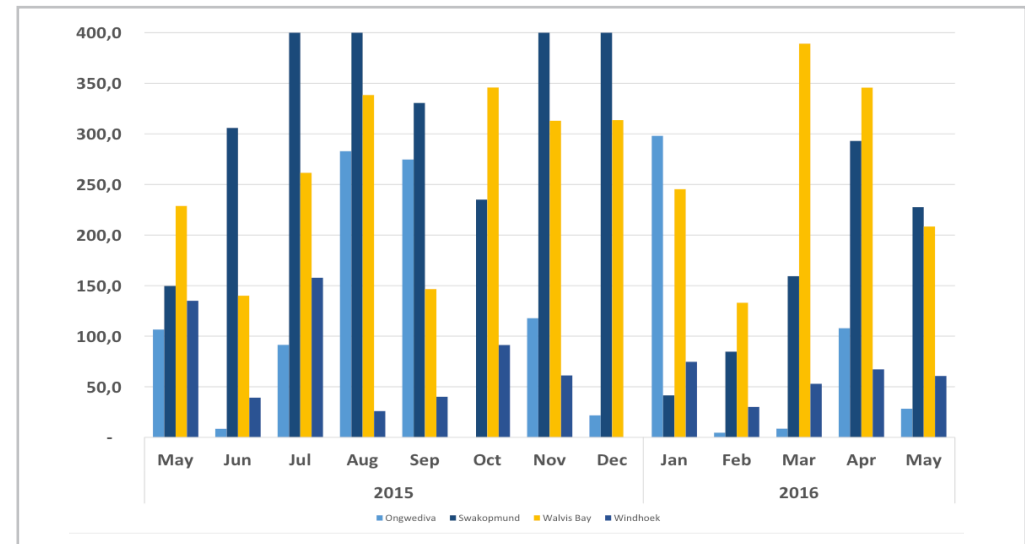


Chart 1: Buildings Completed Index

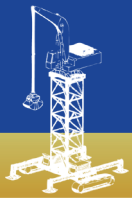


- The Composite Buildings Completed Index for May 2016 decreased to 95.4 basis points down from 128.4 basis points recorded in the preceding month. This represents declines of 25.7 percent m/m and 34.1 percent y/y.
- In monetary terms, buildings completed during the period of May 2016 amounted to N\$ 72 million compared to N\$ 110 million recorded during the same period of 2015.

Chart 2: Buildings Completed Indices for selected towns



- **Windhoek** Buildings Completed Index recorded 60.7 basis points in May 2016 compared to 67.2 basis points recorded for the previous month. This represents declines of 9.7 percent m/m and 55.0 percent y/y.
- **Swakopmund** Buildings Completed Index recorded 227.7 basis points in May 2016 compared to 293.0 basis points recorded for the previous month. This represents a decline of 22.3 percent m/m and an increase of 52.2 percent y/y.
- **Walvis Bay** Buildings Completed Index has recorded 208.5 basis points in May 2016 compared to 345.7 basis points recorded for the previous month. This represents declines of 39.7 percent m/m and 8.9 percent y/y.
- **Ongwediva** Buildings Completed Index recorded 28.4 basis points in May 2016 compared to 108.0 basis points recorded for the previous month. This represents declines of 73.7 percent m/m and 73.4 percent y/y.



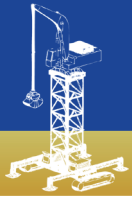
Monthly Building Plans Report

Issue 029
27 July 2016

Table 1: Indices of buildings completed

Year	Month	Ongwediva	Swakopmund	Walvis Bay	Windhoek	Composite index
2013	Jan	471.9	25.3	3 09.0	4 9.0	102.9
	Feb	62.3	1 09.7	2 50.5	107.2	119.5
	Mar	36.4	1 58.7	90.6	207.3	176.8
	Apr	135.2	1 47.0	1 27.9	118.8	124.5
	May	36.0	90.2	1 33.9	188.6	159.6
	Jun	31.7	1 33.3	2 17.2	139.9	139.7
	Jul	-	1 17.1	92.4	9 0.1	87.5
	Aug	841.4	1 50.8	85.5	7 2.1	137.3
	Sep	65.9	1 48.5	1 54.0	4 3.6	70.2
	Oct	15.5	1 50.3	92.8	112.3	108.4
	Nov	138.7	2 86.7	1 80.9	3 6.1	90.6
	Dec	56.6	2 03.1	2 85.9	2 9.0	80.3
2014	Jan	46.4	62.2	37.1	7 8.4	69.7
	Feb	49.1	1 45.8	71.8	165.7	145.1
	Mar	176.9	1 78.6	2 20.7	5 4.1	96.2
	Apr	55.1	56.2	93.4	5 7.6	61.0
	May	167.7	98.7	4 15.9	9 6.5	135.5
	Jun	162.2	1 64.0	3 07.1	5 7.3	104.7
	Jul	84.6	1 07.4	1 17.9	408.1	316.4
	Aug	174.8	4 42.5	1 73.5	9 5.6	153.7
	Sep	15.0	1 70.9	5 21.1	8 1.6	134.8
	Oct	140.6	1 05.6	2 98.2	319.2	277.2
	Nov	10.4	3 81.9	1 32.4	6 5.0	108.8
	Dec	-	81.6	5 60.6	5 4.2	107.5

Year	Month	Ongwediva	Swakopmund	Walvis Bay	Windhoek	Composite index
2015	Jan	-	2 50,9	40,7	2 5,3	54,0
	Feb	385,0	4 82,1	2 20,6	187,1	242,2
	Mar	212,0	1 45,1	2 24,5	7 5,2	109,4
	Apr	-	5 74,2	3 080,8	3 8,3	425,8
	May	106,6	1 49,6	2 28,8	135,0	144,8
	June	8,5	3 05,9	1 40,0	3 9,3	81,9
	July	91,4	5 65,0	2 61,5	157,7	216,1
	Aug	282,8	4 21,3	3 38,4	2 6,1	127,5
	Sep	274,7	3 30,6	1 46,6	4 0,1	104,9
	Oct	-	2 35,0	3 45,9	9 1,3	130,3
	Nov	117,8	5 09,5	3 13,0	6 1,2	149,1
	Dec	21,7	7 70,2	3 13,6	-	133,1
2016	Jan	298,1	41,5	2 45,4	7 4,7	104,1
	Feb	4,7	84,7	1 33,1	3 0,1	46,2
	Mar	8,6	1 59,3	3 89,2	5 3,0	99,1
	Apr	108,0	2 93,0	3 45,7	6 7,2	128,4
	May	28,4	2 27,7	2 08,5	6 0,7	95,4



Monthly Building Plans Report

Issue 029
27 July 2016

Methodology

Data Sources: Selected local authorities from the following town councils:
Ongwediva
Swakopmund
Walvis Bay
Windhoek

Base year: 2010

Calculations of index: The NSA monitors the value and number of buildings completed for 24 local authorities on a monthly basis. Four of these towns that accounted for 92 percent of the total values of all buildings completed in 2010 have been selected for the index compilation.