

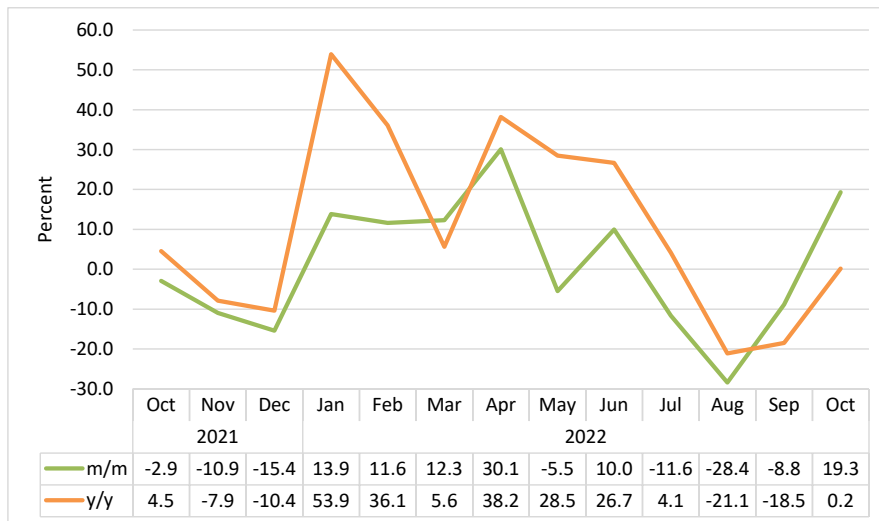


Livestock Sectoral Report October 2022

Namibia Statistics Agency
P.O. Box 2133
FGI House, Post Street Mall
Windhoek Namibia

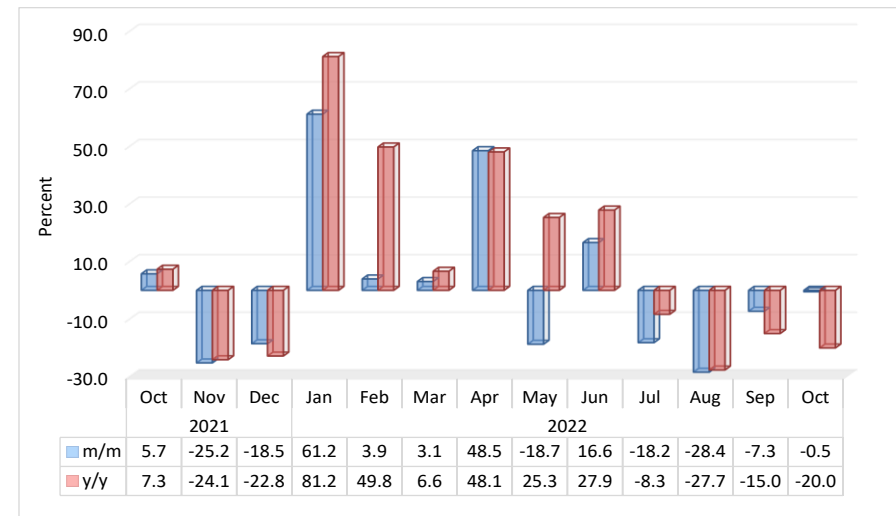
Tel: +264 61 431 3200
Fax: +264 61 431 3253
Email: info@nsa.org.na
www.nsa.org.na

Chart 1: Livestock Marketed Composite Index, Percent



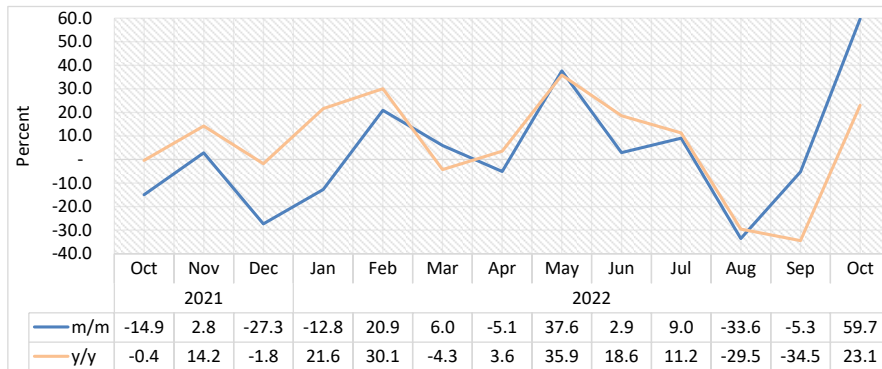
- The **Livestock Marketed Composite Index** improved monthly by 19.3 percent in October 2022, when compared to the decline of 8.8 percent that was recorded in the preceding month. Moreover, the index recorded a marginal increase of 0.2 percent, year on year.
- The improved monthly performance mainly emanated from an increase in live cattle exported which was a consequence of the lifting of Food and Mouth Disease (FMD) related restrictions on livestock movements by South Africa.
- In absolute terms, the total number of livestock marketed for October 2022 stood at 66 820 as compared to 58 291 and 56 463 livestock marketed during the preceding month and corresponding month of 2021, respectively.

Chart 2: Cattle Export Approved Abattoirs & Butchers Index, Percent



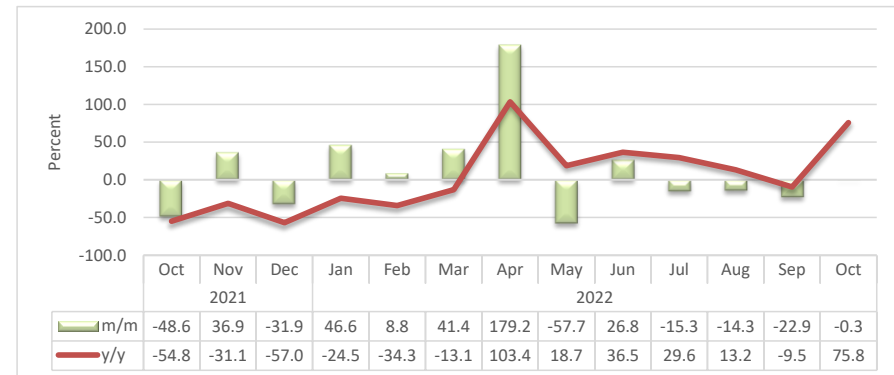
- The Index for **'Cattle Export Approved Abattoirs and Butchers'** in October 2022 recorded a marginal decline of 0.5 percent monthly, compared to a decline of 7.3 percent recorded a month earlier. Annually, the index recorded a decline of 20.0 percent.
- The number of cattle marketed through export-approved abattoirs and butchers for October 2022 was 6 324 animals, of which 91.5 percent (5 788 cattle) were sourced from the Southern Veterinary Cordon Fence (S-VCF), while 8.4 percent (536 cattle) were from the Northern Veterinary Cordon Fence (N-VCF).

Chart 3: Live Cattle Exported on Hoof Index, Percent



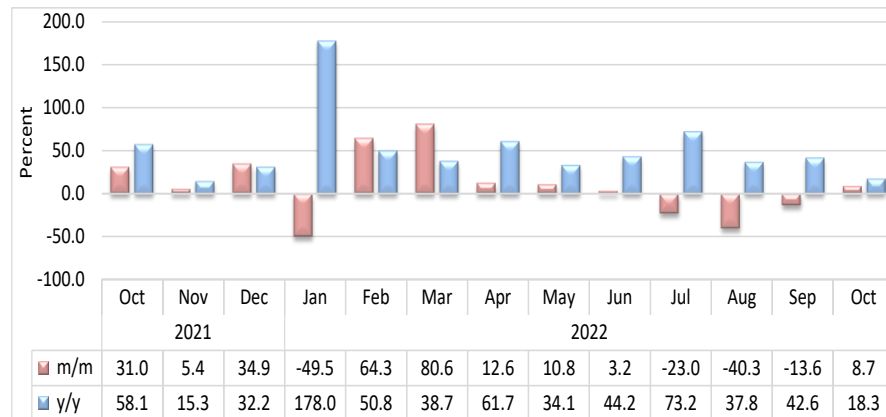
- The Index for **Live Cattle Exported on Hoof** registered a growth of 59.7 percent during the review period, compared to a reduction of 5.3 percent that was recorded in September 2022. Similarly, the index posted an annual increase of 23.1 percent.
- A total number of 15 667 live cattle on hoof were exported during the month of October 2022, compared to 9 808 cattle export recorded in September 2022 while 12 730 live cattle were registered a year earlier.
- South Africa was the main destination of exports with 15 514 cattle during the month of October 2022, followed by Angola in the second place with 149 cattle.

Chart 4: Small Stock Export Approved Abattoirs and Butchers Index, Percent



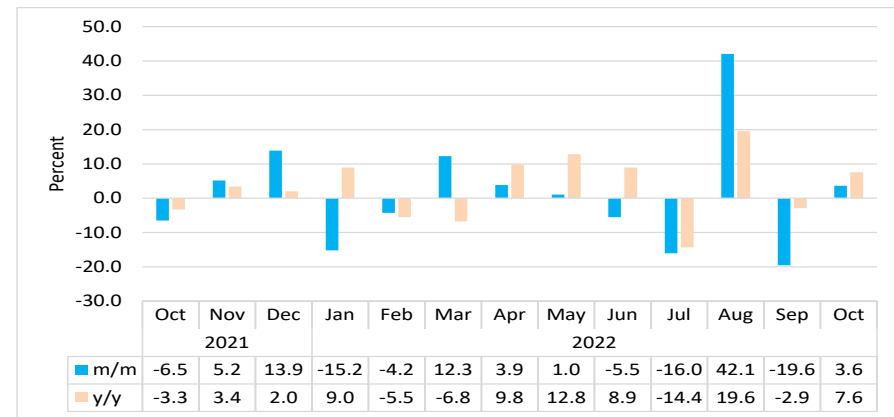
- On a monthly basis, the index for **'Small Stock Export Approved Abattoirs and Butchers'** recorded a marginal decline of 0.3 percent in October 2022, compared to a reduction of 22.9 percent that was recorded in September 2022. Furthermore, the annual index increased by 75.8 percent.
- A total of 8 653 small stock were marketed through the export-approved abattoirs and butchers in October 2022, of which 7 550 were sheep sourced from Southern Veterinary Cordon Fence (S-VCF) and 208 goats were sourced from Southern Veterinary Cordon Fence (S-VCF) while only 8 goats sourced from Northern Veterinary Cordon Fence (N-VCF).

Chart 5: Live Small Stock Exported, Percent



- On a monthly basis, the **Index for Live Small Stock Exported** recorded a growth of 8.7 percent in October 2022, compared to a reduction of 13.6 percent registered a month earlier. However, the index registered an increase of 18.3 percent year on year.
- During the review period, 32 355 small stocks were exported live in October 2022. Goats scooped the largest share of 51.8 percent, while Sheep contributed share of 48.2 percent to the total exported live small stock.
- A total of 15 606 sheep were exported in October 2022, of which 15 555 sheep were exported live to South Africa, while Botswana sourced 51 sheep from Namibia.
- Additionally, a total of 16 619 live goats were exported to South Africa during the period under review, while only 86 goats and 44 goats were exported to Botswana and Zimbabwe, respectively.

Chart 6: Pigs Index, Percent



- During the month of October 2022, the **Index for Pigs** increased on a monthly basis by 3.6 percent, in contrast to a decline of 19.6 percent registered in the preceding month. Similarly, the index recorded an increase of 7.6 percent, year on year.
- The number of pigs slaughtered locally stood at 3 821 pigs in October 2022, compared to 3 688 pigs slaughtered a month earlier, while 3 552 pigs were slaughtered locally during the corresponding month of 2021.

Table1. Number of livestock marketed ('000)

Year	Month	Cattle export abattoirs & butchers	Cattle live exported South Africa & Angola	Small stock Export abattoirs and butchers	Live small stock South Africa and Angola	Pigs slaughtered	Total Livestock Marketed
2018	Jan	5.2	17.8	19.6	13.2	3.8	59.6
	Feb	5.2	31.3	20.4	34.4	3.0	94.2
	Mar	7.8	37.1	33.0	39.3	3.0	120.2
	Apr	9.0	20.2	54.8	56.9	2.9	143.8
	May	7.0	20.6	43.2	64.2	3.7	138.7
	Jun	10.2	25.5	35.7	77.7	3.4	152.4
	Jul	5.3	27.4	33.1	77.3	4.0	147.1
	Aug	6.3	30.5	30.0	59.4	4.1	130.3
	Sep	6.1	28.9	21.5	39.8	4.1	100.4
	Oct	6.3	23.6	25.6	37.7	5.1	98.4
	Nov	7.2	23.7	30.0	40.3	4.2	105.5
	Dec	2.6	21.3	28.2	47.8	3.8	103.7
2019	Jan	1.8	12.0	24.0	27.5	4.5	69.8
	Feb	5.8	17.9	16.8	39.0	3.7	83.2
	Mar	13.5	33.4	33.4	62.9	3.7	146.9
	Apr	11.5	30.7	65.5	77.2	4.3	189.1
	May	18.9	37.4	32.8	79.6	4.1	172.8
	Jun	15.5	28.1	25.6	73.5	3.8	146.5
	Jul	14.5	28.1	22.6	57.1	4.2	126.6
	Aug	17.3	27.0	12.8	46.5	3.7	107.3
	Sep	13.5	22.4	11.3	34.6	3.8	85.5
	Oct	7.9	22.1	10.0	35.1	3.9	78.9
	Nov	8.4	19.0	8.1	27.5	3.8	66.8
	Dec	2.4	11.3	12.1	48.2	4.2	78.1

Table1: Number of livestock marketed ('000), continue.....

Year	Month	Cattle export abattoirs & butchers	Cattle live exported South Africa & Angola	Small stock Export abattoirs and butchers	Live small stock South Africa and Angola	Pigs slaughtered	Total Livestock Marketed
2020	Jan	6.0	9.9	10.9	11.3	3.7	41.9
	Feb	6.5	21.3	11.4	18.4	3.4	61.1
	Mar	8.2	17.6	14.8	32.3	4.0	76.8
	Apr	7.9	10.3	27.5	33.7	3.9	83.3
	May	13.2	6.1	13.5	36.4	3.3	72.6
	Jun	9.7	10.0	13.1	37.8	3.8	74.4
	Jul	7.8	19.1	10.9	29.1	4.0	70.9
	Aug	5.6	15.6	8.7	21.7	3.5	55.1
	Sep	5.4	14.7	9.9	16.4	3.7	50.1
	Oct	7.4	12.8	10.9	17.3	3.7	52.0
	Nov	7.8	11.5	9.8	25.0	3.6	57.7
	Dec	6.2	9.7	10.7	29.4	4.2	60.2
2021	Jan	4.3	6.8	8.9	7.1	3.3	30.4
	Feb	5.4	7.7	11.1	21.4	3.7	49.3
	Mar	7.8	11.1	11.9	42.0	4.2	77.0
	Apr	8.3	9.7	14.2	40.6	3.7	76.5
	May	8.0	10.2	10.3	54.2	3.6	86.3
	Jun	9.2	12.1	11.3	52.0	3.5	88.1
	Jul	10.4	14.0	10.1	33.3	3.8	71.7
	Aug	9.5	14.7	9.9	25.0	3.8	63.0
	Sep	7.5	15.0	9.6	20.9	3.8	56.7
	Oct	7.9	12.7	4.9	27.4	3.6	56.5
	Nov	5.9	13.1	6.7	28.8	3.7	58.3
	Dec	4.8	9.5	4.6	38.9	4.3	62.1
2022	Jan	7.8	8.3	6.7	19.6	3.6	46.0
	Feb	8.1	10.0	7.3	32.3	3.5	61.1
	Mar	8.3	10.6	10.4	58.3	3.9	91.4
	Apr	12.4	10.1	28.9	65.6	4.0	121.0
	May	10.0	13.9	12.2	72.7	4.1	112.9
	Jun	11.7	14.3	15.5	75.0	3.8	120.4
	Jul	9.6	15.6	13.1	57.7	3.2	99.3
	Aug	6.9	10.4	11.3	34.5	4.6	67.5
	Sep	6.4	9.8	8.7	29.8	3.7	58.3
	Oct	6.3	15.7	8.7	32.4	3.8	66.8

Table2: Indices of Livestock marketed

Year	Month	Cattle export abattoirs & butchers	Cattle Live export on hoof	Small stock Export abattoirs and butchers	Live small stock South Africa and Angola	Pigs slaughtered	Composite Index
2018	Jan	51.9	83.5	44.8	27.5	122.4	63.3
	Feb	52.1	146.8	46.6	71.6	94.2	90.0
	Mar	78.8	173.9	75.6	81.8	96.9	114.8
	Apr	90.4	94.5	125.6	118.4	93.5	97.2
	May	70.9	96.4	99.0	133.6	118.7	89.6
	Jun	102.5	119.4	81.9	161.8	107.6	112.5
	Jul	53.4	128.2	75.8	161.1	128.3	94.8
	Aug	63.5	142.9	68.6	123.7	132.3	100.9
	Sep	60.9	135.7	49.2	82.9	129.9	92.0
	Oct	63.6	110.8	58.6	78.5	163.9	85.3
	Nov	73.0	111.0	68.8	84.0	133.0	89.7
	Dec	26.6	99.9	64.6	99.5	120.0	66.2
2019	Jan	18.2	56.4	55.0	57.2	143.9	42.8
	Feb	58.2	83.9	38.5	81.3	116.4	70.1
	Mar	136.2	156.4	76.6	131.0	117.0	138.0
	Apr	116.2	143.8	149.9	160.7	136.2	133.6
	May	190.2	175.2	75.2	165.7	131.4	171.6
	Jun	155.6	131.9	58.7	153.1	120.5	137.8
	Jul	146.4	131.8	51.9	119.0	133.3	130.8
	Aug	174.1	126.7	29.3	96.9	117.6	136.5
	Sep	135.5	104.9	25.9	72.0	120.1	109.5
	Oct	79.4	103.4	22.8	73.1	125.1	84.8
	Nov	84.1	88.9	18.6	57.3	120.5	79.6
	Dec	24.0	53.1	27.6	100.4	133.3	45.2

Table2: Indices of Livestock marketed, continue...

Year	Month	Cattle export abattoirs & butchers	Cattle Live export on hoof	Small stock Export abattoirs and butchers	Live small stock South Africa and Angola	Pigs slaughtered	Composite Index
2020	Jan	60.6	46.6	24.9	23.6	118.7	51.3
	Feb	65.1	99.8	26.2	38.4	109.9	74.1
	Mar	82.2	82.7	33.8	67.3	126.1	78.7
	Apr	79.5	48.1	63.0	70.3	124.5	67.2
	May	133.1	28.7	31.0	75.8	105.3	80.3
	Jun	97.3	46.9	29.9	78.8	120.6	72.4
	Jul	78.4	89.6	25.0	60.5	128.9	78.4
	Aug	56.4	73.3	19.9	45.1	112.7	60.7
	Sep	54.8	68.7	22.6	34.1	119.2	57.7
	Oct	74.2	59.9	24.9	36.0	117.1	63.1
	Nov	78.5	53.8	22.4	52.1	115.2	63.8
	Dec	62.9	45.4	24.4	61.3	132.9	55.5
2021	Jan	43.2	32.0	20.4	14.7	105.5	36.8
	Feb	54.3	36.2	25.5	44.6	116.5	46.4
	Mar	78.6	52.1	27.3	87.5	132.6	67.2
	Apr	84.0	45.7	32.5	84.5	116.9	66.8
	May	80.7	47.9	23.6	112.9	114.9	67.9
	Jun	92.2	56.5	26.0	108.3	112.5	75.7
	Jul	105.2	65.7	23.2	69.4	120.1	81.4
	Aug	95.4	68.9	22.8	52.1	122.2	77.0
	Sep	75.3	70.2	20.5	43.5	121.1	67.8
	Oct	79.6	59.7	9.9	57.0	113.2	65.8
	Nov	59.6	61.4	14.1	60.0	119.1	58.6
	Dec	48.5	44.6	6.8	81.0	135.6	49.4
2022	Jan	78.2	38.9	15.4	40.9	115.0	56.6
	Feb	81.3	47.0	16.8	67.2	110.1	63.2
	Mar	83.7	49.9	23.7	121.4	123.6	70.9
	Apr	124.4	47.3	66.2	136.6	128.4	92.3
	May	101.1	65.1	28.0	151.4	129.7	87.2
	Jun	117.9	67.0	35.5	156.2	122.5	95.9
	Jul	96.4	73.1	30.1	120.3	102.9	84.8
	Aug	66.4	48.6	22.2	71.8	146.2	59.3
	Sep	60.7	46.0	15.6	62.0	117.6	53.6
	Oct	63.7	73.4	19.8	67.4	121.8	66.1

- Data Sources** : The data was obtained from the Meat Board of Namibia.
- Base year** : Livestock Sectoral report is harmonised with the quarterly and annual national accounts base year 2015.
- Calculations of index** : The index is calculated based on the 2015 base year volumes and 2015 weights. The index is a magnitude of the volume Changes over time, with reference to the volume of the base year 2015. The index is calculated as a ratio of the volume of a specific component in a specific month to the total volume of that component in 2015.
- Conversion** : 1 basis point = 0.01 percent