



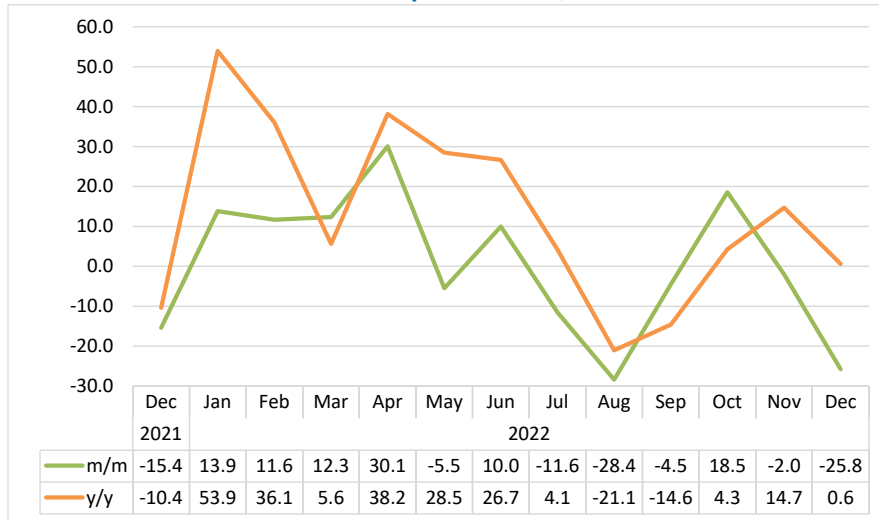
# Livestock Report December 2022

---

Namibia Statistics Agency  
P.O. Box 2133  
FGI House, Post Street Mall  
Windhoek Namibia

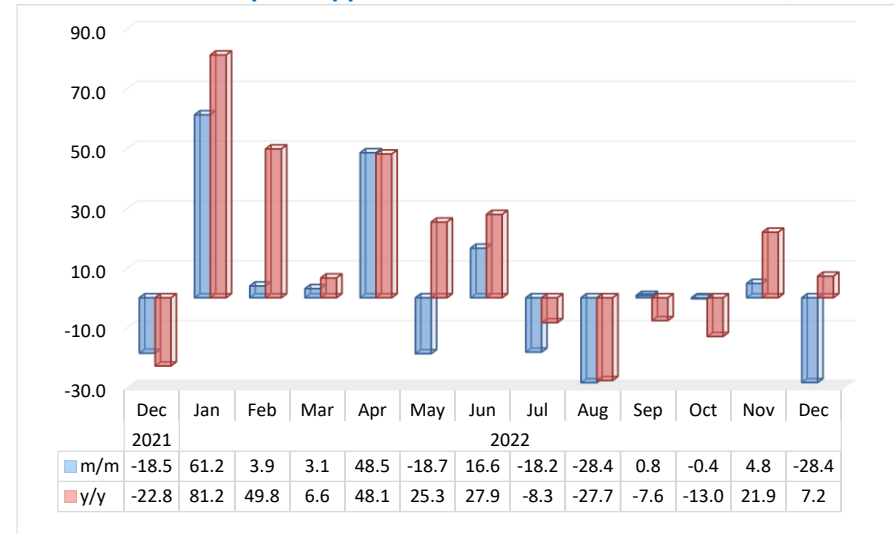
Tel: +264 61 431 3200  
Fax: +264 61 431 3253  
Email: [info@nsa.org.na](mailto:info@nsa.org.na)  
[www.nsa.org.na](http://www.nsa.org.na)

**Chart 1: Livestock Marketed Composite Index, Percent**



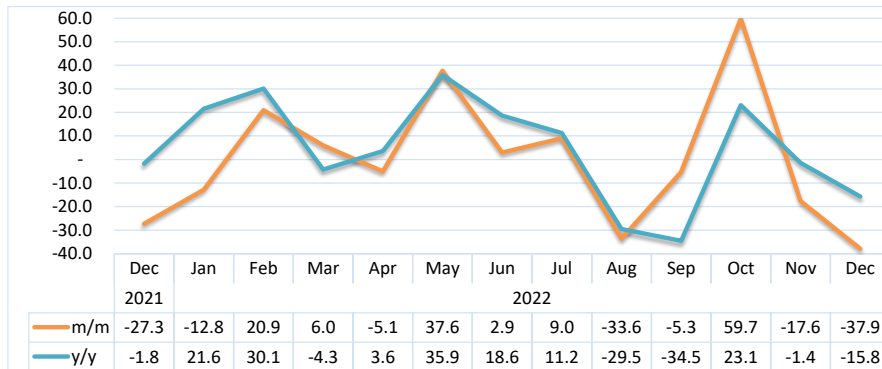
- The **Livestock Marketed Composite Index** recorded a monthly decline of 25.8 percent in December 2022 compared to a reduction of 2.0 percent in the preceding month. However, the index recorded a marginal increase of 0.6 percent, year on year.
- The decline registered monthly was due to live cattle exported on hoof, cattle marketed through export approved abattoirs & butchers, and pigs that reduced.
- In absolute terms, the total number of livestock marketed for December 2022 stood at 71 149 compared to 74 902 and 62 052 livestock marketed in the preceding month and in the corresponding month of 2021, respectively.

**Chart 2: Cattle Export Approved Abattoirs & Butchers Index, Percent**



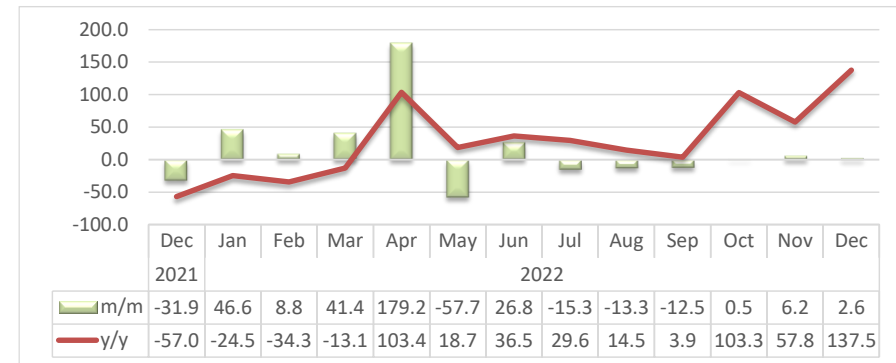
- The Index for **'Cattle Export Approved Abattoirs and Butchers'** in December 2022 recorded a decline of 28.4 percent monthly, compared to an increase of 4.8 percent posted a month earlier. However, the index recorded an increase of 7.2 percent.
- The number of cattle marketed through export-approved abattoirs and butchers for December 2022 stood at 5 165, of which 95.5 percent (4 931 cattle) were sourced from the Southern Veterinary Cordon Fence (S-VCF), while 4.5 percent (234 cattle) were sourced from the Northern Veterinary Cordon Fence (N-VCF).

**Chart 3: Live Cattle Exported on Hoof Index, Percent**



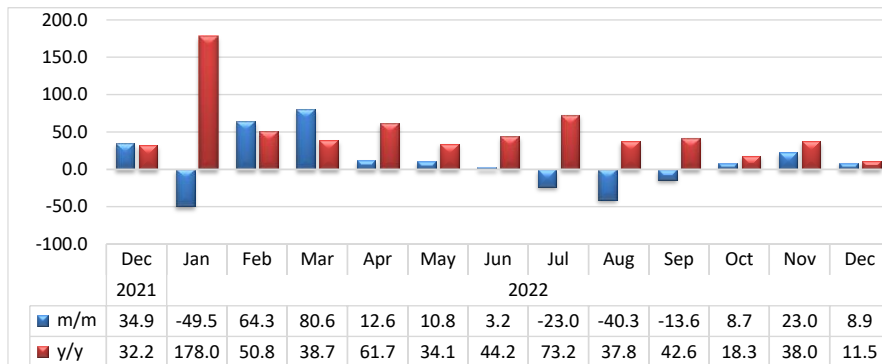
- The Index for **Live Cattle Exported on Hoof** declined by 37.9 percent during the review month, compared to a reduction of 17.6 percent that was recorded in November 2022. Similarly, the index posted an annual decline of 15.8 percent.
- A total number of 8 018 live cattle on hoof were exported during the month of December 2022, compared to export of 12 908 cattle recorded in November 2022, while 9 517 live cattle were exported a year earlier.
- South Africa was the main destination for export with 7 931 cattle during the month of December 2022, followed by Botswana in the second place with 56 cattle, while only 31 cattle were exported to Zambia.

**Chart 4: Small Stock Export Approved Abattoirs and Butchers Index, Percent**



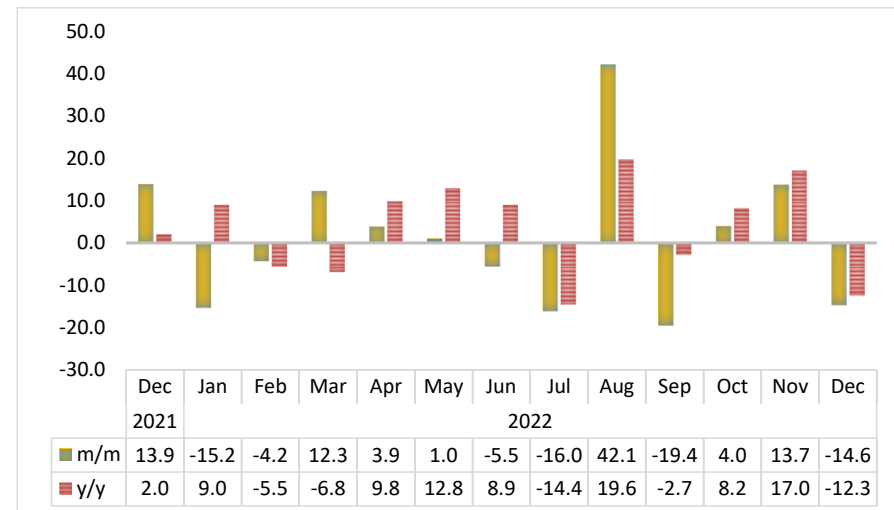
- **‘Small Stock Export Approved Abattoirs and Butchers’** index recorded a monthly increase of 2.6 percent in December 2022 compared to an increase of 6.2 percent that was registered in November 2022. Moreover, the index annually increased by 137.5 percent.
- A total of 10 903 small stock were marketed through the export approved abattoirs and butchers in December 2022 which were all sourced from Southern Veterinary Cordon Fence (S-VCF).

**Chart 5: Live Small Stock Export, Percent**



- The **Index for Live Small Stock Export** in December 2022 recorded an increase of 8.9 percent on a monthly basis, compared to an increase of 23.0 percent registered in the preceding month. Additionally, the index registered an increase of 11.5 percent, year on year.
- During the review period, 43 331 small stock were exported. Sheep recorded the largest share of 61.2 percent, while goats contributed 38.8 percent to the total export of live small stock.
- A total of 26 518 sheep were marketed in December 2022, of which 26 452 sheep (99.8%) were exported live to South Africa, while 37 sheep (0.1%) were exported to Botswana and 29 sheep (0.1%) were exported to Zambia.
- Additionally, a total of 16 769 live goats were exported to South Africa during the period under review, followed by Zimbabwe with 22 goats, while Botswana and Zambia both imported 11 goats each from Namibia.

**Chart 6: Pigs Index, Percentage change**



- For the month of December 2022, the **Index for Pigs** declined on a monthly basis by 14.6 percent, compared to a growth of 13.7 percent posted a month earlier. Similarly, the index recorded a decline of 12.3 percent, year on year.
- The number of pigs slaughtered locally in December 2022 was 3 732, compared to 4 370 pigs slaughtered a month earlier, while 4 253 pigs were slaughtered locally during the corresponding month of 2021.

**Table1. Number of livestock marketed ('000)**

Year	Month	Cattle export abattoirs & butchers	Cattle live exported South Africa & Angola	Small stock Export abattoirs and butchers	Live small stock South Africa and Angola	Pigs slaughtered	Total Livestock Marketed
2019	Jan	1.8	12.0	24.0	27.5	4.5	69.8
	Feb	5.8	17.9	16.8	39.0	3.7	83.2
	Mar	13.5	33.4	33.4	62.9	3.7	146.9
	Apr	11.5	30.7	65.5	77.2	4.3	189.1
	May	18.9	37.4	32.8	79.6	4.1	172.8
	Jun	15.5	28.1	25.6	73.5	3.8	146.5
	Jul	14.5	28.1	22.6	57.1	4.2	126.6
	Aug	17.3	27.0	12.8	46.5	3.7	107.3
	Sep	13.5	22.4	11.3	34.6	3.8	85.5
	Oct	7.9	22.1	10.0	35.1	3.9	78.9
	Nov	8.4	19.0	8.1	27.5	3.8	66.8
	Dec	2.4	11.3	12.1	48.2	4.2	78.1
2020	Jan	6.0	9.9	10.9	11.3	3.7	41.9
	Feb	6.5	21.3	11.4	18.4	3.4	61.1
	Mar	8.2	17.6	14.8	32.3	4.0	76.8
	Apr	7.9	10.3	27.5	33.7	3.9	83.3
	May	13.2	6.1	13.5	36.4	3.3	72.6
	Jun	9.7	10.0	13.1	37.8	3.8	74.4
	Jul	7.8	19.1	10.9	29.1	4.0	70.9
	Aug	5.6	15.6	8.7	21.7	3.5	55.1
	Sep	5.4	14.7	9.9	16.4	3.7	50.1
	Oct	7.4	12.8	10.9	17.3	3.7	52.0
	Nov	7.8	11.5	9.8	25.0	3.6	57.7
	Dec	6.2	9.7	10.7	29.4	4.2	60.2

**Table1: Number of livestock marketed ('000), continue.....**

Year	Month	Cattle export abattoirs & butchers	Cattle live exported South Africa & Angola	Small stock Export abattoirs and butchers	Live small stock South Africa and Angola	Pigs slaughtered	Total Livestock Marketed
2021	Jan	4.3	6.8	8.9	7.1	3.3	30.4
	Feb	5.4	7.7	11.1	21.4	3.7	49.3
	Mar	7.8	11.1	11.9	42.0	4.2	77.0
	Apr	8.3	9.7	14.2	40.6	3.7	76.5
	May	8.0	10.2	10.3	54.2	3.6	86.3
	Jun	9.2	12.1	11.3	52.0	3.5	88.1
	Jul	10.4	14.0	10.1	33.3	3.8	71.7
	Aug	9.5	14.7	9.9	25.0	3.8	63.0
	Sep	7.5	15.0	9.6	20.9	3.8	56.7
	Oct	7.9	12.7	4.9	27.4	3.6	56.5
	Nov	5.9	13.1	6.7	28.8	3.7	58.3
	Dec	4.8	9.5	4.6	38.9	4.3	62.1
2022	Jan	7.8	8.3	6.7	19.6	3.6	46.0
	Feb	8.1	10.0	7.3	32.3	3.5	61.1
	Mar	8.3	10.6	10.4	58.3	3.9	91.4
	Apr	12.4	10.1	28.9	65.6	4.0	121.0
	May	10.0	13.9	12.2	72.7	4.1	112.9
	Jun	11.7	14.3	15.5	75.0	3.8	120.4
	Jul	9.6	15.6	13.1	57.7	3.2	99.3
	Aug	6.9	10.4	11.4	34.5	4.6	67.6
	Sep	6.9	9.8	10.0	29.8	3.7	60.1
	Oct	6.9	15.7	10.0	32.4	3.8	68.8
	Nov	7.2	12.9	10.6	39.8	4.4	74.9
	Dec	5.2	8.0	10.9	43.3	3.7	71.1

**Table2: Indices of Livestock marketed**

Year	Month	Cattle export abattoirs & butchers	Cattle Live export on hoof	Small stock Export abattoirs and butchers	Live small stock South Africa and Angola	Pigs slaughtered	Composite Index
2019	Jan	18.2	56.4	55.0	57.2	143.9	42.8
	Feb	58.2	83.9	38.5	81.3	116.4	70.1
	Mar	136.2	156.4	76.6	131.0	117.0	138.0
	Apr	116.2	143.8	149.9	160.7	136.2	133.6
	May	190.2	175.2	75.2	165.7	131.4	171.6
	Jun	155.6	131.9	58.7	153.1	120.5	137.8
	Jul	146.4	131.8	51.9	119.0	133.3	130.8
	Aug	174.1	126.7	29.3	96.9	117.6	136.5
	Sep	135.5	104.9	25.9	72.0	120.1	109.5
	Oct	79.4	103.4	22.8	73.1	125.1	84.8
	Nov	84.1	88.9	18.6	57.3	120.5	79.6
	Dec	24.0	53.1	27.6	100.4	133.3	45.2
2020	Jan	60.6	46.6	24.9	23.6	118.7	51.3
	Feb	65.1	99.8	26.2	38.4	109.9	74.1
	Mar	82.2	82.7	33.8	67.3	126.1	78.7
	Apr	79.5	48.1	63.0	70.3	124.5	67.2
	May	133.1	28.7	31.0	75.8	105.3	80.3
	Jun	97.3	46.9	29.9	78.8	120.6	72.4
	Jul	78.4	89.6	25.0	60.5	128.9	78.4
	Aug	56.4	73.3	19.9	45.1	112.7	60.7
	Sep	54.8	68.7	22.6	34.1	119.2	57.7
	Oct	74.2	59.9	24.9	36.0	117.1	63.1
	Nov	78.5	53.8	22.4	52.1	115.2	63.8
	Dec	62.9	45.4	24.4	61.3	132.9	55.5

**Table2: Indices of Livestock marketed, continue...**

Year	Month	Cattle export abattoirs & butchers	Cattle Live export on hoof	Small stock Export abattoirs and butchers	Live small stock South Africa and Angola	Pigs slaughtered	Composite Index
2021	Jan	43.2	32.0	20.4	14.7	105.5	36.8
	Feb	54.3	36.2	25.5	44.6	116.5	46.4
	Mar	78.6	52.1	27.3	87.5	132.6	67.2
	Apr	84.0	45.7	32.5	84.5	116.9	66.8
	May	80.7	47.9	23.6	112.9	114.9	67.9
	Jun	92.2	56.5	26.0	108.3	112.5	75.7
	Jul	105.2	65.7	23.2	69.4	120.1	81.4
	Aug	95.4	68.9	22.8	52.1	122.2	77.0
	Sep	75.3	70.2	22.0	43.5	121.1	67.9
	Oct	79.6	59.7	11.3	57.0	113.2	65.9
	Nov	59.6	61.4	15.4	60.0	119.1	58.7
	Dec	48.5	44.6	10.5	81.0	135.6	49.7
2022	Jan	78.2	38.9	15.4	40.9	115.0	56.6
	Feb	81.3	47.0	16.8	67.2	110.1	63.2
	Mar	83.8	49.9	23.7	121.4	123.6	71.0
	Apr	124.4	47.3	66.2	136.6	128.4	92.3
	May	101.1	65.1	28.0	151.4	129.7	87.2
	Jun	117.9	67.0	35.5	156.2	122.5	95.9
	Jul	96.4	73.1	30.1	120.3	102.9	84.8
	Aug	69.0	48.6	26.1	71.8	146.2	60.7
	Sep	69.6	46.0	22.8	62.0	117.8	58.0
	Oct	69.3	73.4	22.9	67.4	122.5	68.8
	Nov	72.6	60.5	24.3	82.9	139.3	67.4
	Dec	52.0	37.6	25.0	90.3	119.0	50.0

- Data Sources** : The data was obtained from the Meat Board of Namibia.
- Base year** : Livestock Sectoral report is harmonised with the quarterly and annual national accounts base year 2015.
- Calculations of index** : The index is calculated based on the 2015 base year volumes and 2015 weights. The index is a magnitude of the volume Changes over time, with reference to the volume of the base year 2015. The index is calculated as a ratio of the volume of a specific component in a specific month to the total volume of that component in 2015.
- Conversion** : 1 basis point = 0.01 percent