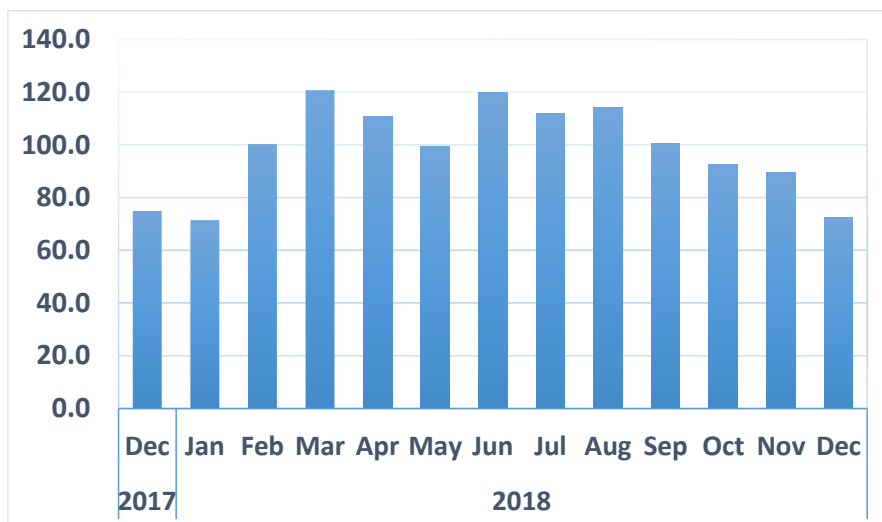


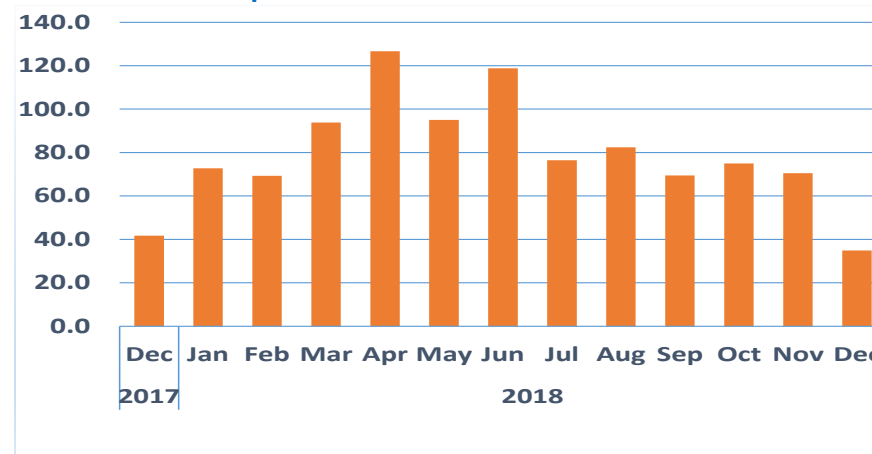


Chart 1: Livestock Marketed Index 2010 = 100



- The Livestock Marketed Composite Index recorded 72.5 basis points in December 2018 compared to 89.5 basis points registered in November 2018. These are decreases of 19.0 percent m/m and 3.2 percent y/y.
- In absolute terms, the number of livestock marketed recorded in December 2018 was 83 618 compared to 88 068 recorded during the preceding month.

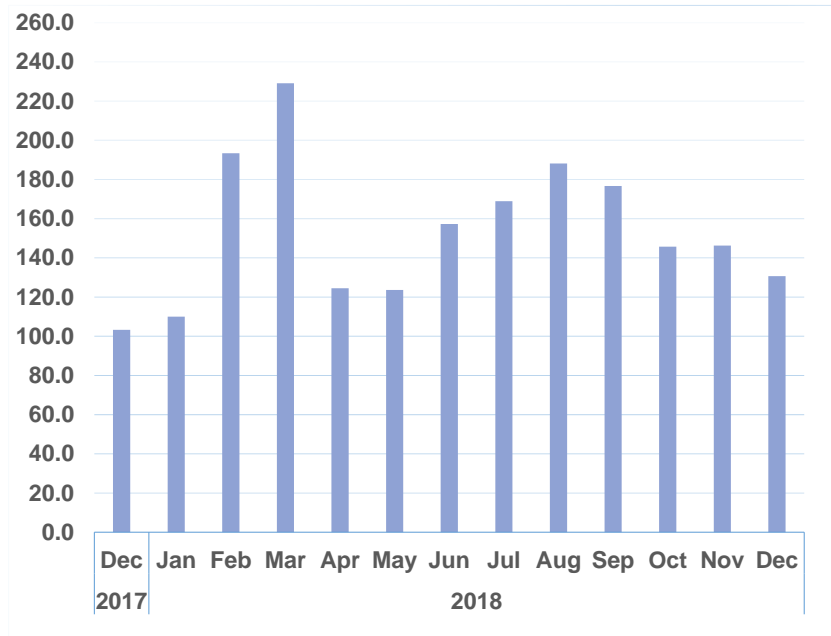
Chart 2: Cattle export abattoirs & butchers



- The index for 'cattle export abattoirs and butchers' stood at 34.9 basis points in December 2018 compared to 70.5 basis points registered in November 2018. These are declines of 50.5 percent m/m and 47.4 percent y/y (Chart 2).
- The decline in the cattle export abattoirs and butchers y/y was attributed to low stock capacity at feedlots due to high weaner prices that prevailed at auctions during 2018.
- The number of cattle marketed to abattoirs in December 2018 dropped to 4 219 from 8 530 recorded in the previous month.

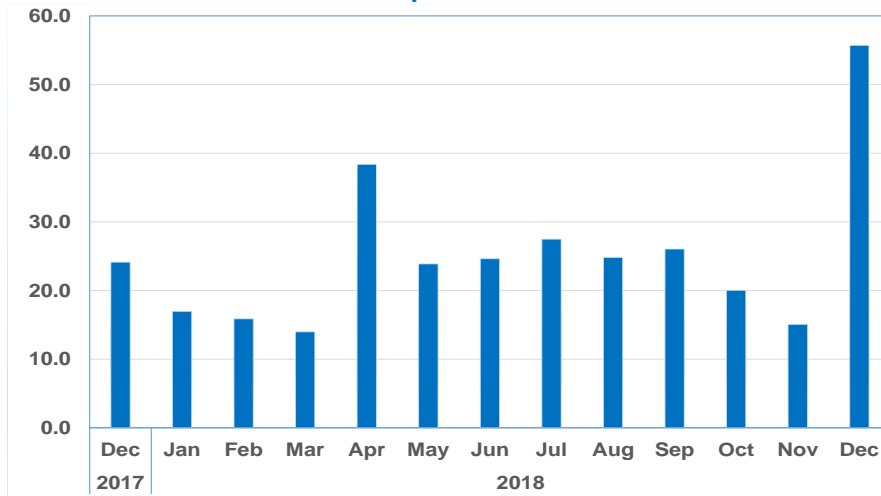


Chart 3: Cattle live exported on hoof



- The index for 'cattle live exported on hoof' stood at 130.7 basis points in December 2018 compared to 146.3 basis points recorded for November 2018. These are decreases of 10.6 percent m/m and 26.5 percent y/y.
- The number of cattle live exported on hoof was 21 164 in December 2018 compared to 23 684 recorded in the month earlier.

Chart 4: Small stock exported abattoir and butchers

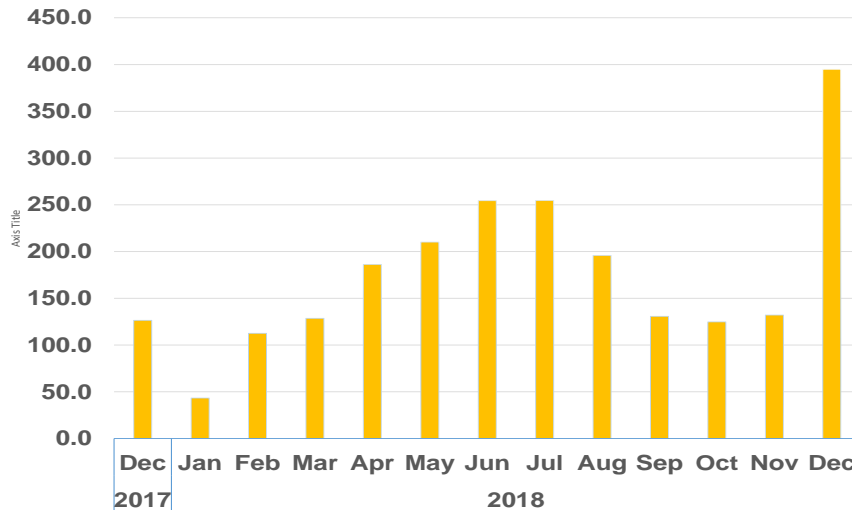


- The small stock exported abattoirs and butchers index for December 2018 registered 55.7 basis points compared to 15.1 basis points recorded for the previous month. These are increases of 270.3 percent m/m and 149.4 percent y/y.
- The number of small stock marketed to abattoirs and butchers in December has dropped to 6 742 from 11 341 recorded for the preceding month.



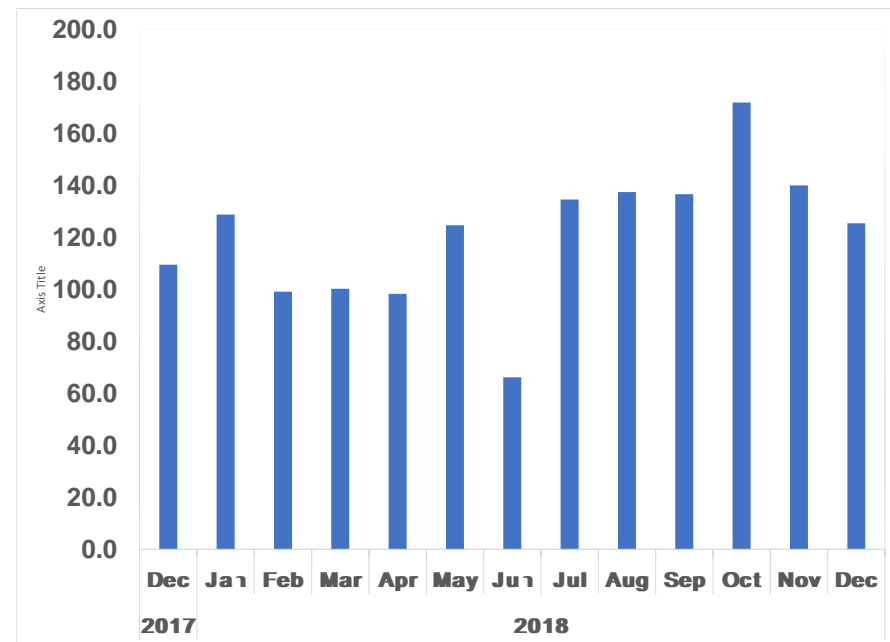
- The number of live small stock exported to South Africa & Angola stood at 47 753 in December 2018 compared to a total of 40 340 live small stock recorded in the preceding month.

Chart 5: Live small stock exported to South Africa & Angola



- The index for live small stock exported to South Africa & Angola stood at 156.4 basis points in December 2018 compared to 132.1 basis points recorded during the previous month. This represents increases of 18.4 percent m/m and 23.6 percent y/y.

Chart 6: Pigs Index





- The index for Pigs stood at 125.4 basis points recorded in December 2018 compared to 140.0 basis points recorded in November 2018. This represents a decline of 10.4 percent m/m and an increase of 14.5 percent y/y.
- The number of pigs slaughtered locally stood at 3 740 in December 2018 compared to a total of 4 173 Pigs slaughtered during the preceding month while 3 265 pigs were slaughtered in December 2017.



Table1. Number of livestock marketed ('000)

		Cattle		Small stock		Pigs	Total
		Export	Live	Export	Live		
2010	Jan	9	11	47	11	3	80
	Feb	8	11	78	23	3	124
	Mar	13	16	105	44	4	182
	Apr	19	12	114	35	4	185
	May	17	6	65	12	3	103
	Jun	18	17	105	41	3	183
	Jul	18	22	80	47	3	170
	Aug	12	24	69	37	3	145
	Sep	8	22	55	37	3	125
	Oct	10	19	52	31	4	115
	Nov	10	21	58	20	2	111
	Dec	6	13	75	30	1	124
2011	Jan	9	14	43	16	3	84
	Feb	8	18	75	15	4	120
	Mar	13	19	110	26	4	172
	Apr	19	14	78	27	4	143
	May	17	17	89	40	3	166
	Jun	18	16	76	31	3	143
	Jul	18	21	71	38	3	150
	Aug	12	21	43	26	3	104
	Sep	8	15	35	24	3	85
	Oct	10	20	36	27	4	96
	Nov	10	15	49	18	2	94
	Dec	6	10	73	32	1	122
2012	Jan	7	10	49	14	3	83
	Feb	8	7	77	20	3	115
	Mar	14	9	97	33	3	155
	Apr	16	7	90	27	6	146
	May	15	6	88	31	3	143
	Jun	17	9	83	37	3	149
	Jul	20	11	80	35	3	149
	Aug	12	18	62	31	1	124
	Sep	8	14	63	32	4	121
	Oct	11	17	38	30	5	103
	Nov	9	18	62	20	1	110
	Dec	6	8	55	29	1	99
2013	Jan	10	11	61	14	4	100
	Feb	10	19	95	19	3	146
	Mar	10	28	124	38	3	202
	Apr	16	25	94	53	3	191
	May	22	25	93	46	4	190
	Jun	19	26	78	65	3	191
	Jul	12	33	73	38	2	159
	Aug	12	31	73	46	3	165
	Sep	12	24	61	38	4	138
	Oct	11	20	62	30	4	126
	Nov	13	18	64	29	4	128
	Dec	6	10	51	40	4	111

Table1. Continue...

2015	Jan	12	18	35	20	4	89
	Feb	9	25	46	34	3	116
	Mar	12	26	78	53	3	171
	Apr	13	18	48	43	3	125
	May	15	14	63	79	2	173
	Jun	17	22	57	69	4	168
	Jul	17	25	50	73	4	169
	Aug	9	34	31	65	4	143
	Sep	11	26	27	46	3	113
	Oct	11	28	73	36	3	152
	Nov	11	11	39	13	1	75
	Dec	5	10	73	46	3	138
2016	Jan	9	8	16	21	4	59
	Feb	7	17	29	36	4	94
	Mar	11	23	45	32	3	115
	Apr	14	24	57	47	3	144
	May	10	22	40	65	4	142
	Jun	12	32	39	78	4	165
	Jul	16	0	38	18	4	76
	Aug	11	0	41	30	4	85
	Sep	14	1	30	27	4	76
	Oct	10	7	22	32	4	75
	Nov	11	18	20	27	4	80
	Dec	4	14	14	38	4	74
2017	Jan	5	11	12	17	4	49
	Feb	10	22	13	43	4	91
	Mar	12	23	25	51	4	115
	Apr	11	25	20	53	4	114
	May	13	27	16	67	4	127
	Jun	18	33	12	65	4	132
	Jul	15	37	12	54	4	122
	Aug	14	42	16	54	3	129
	Sep	15	27	33	30	2	108
	Oct	10	28	21	32	3	94
	Nov	11	24	19	28	4	86
	Dec	8	17	17	39	3	83
2018	Jan	9	18	13	13	4	56
	Feb	8	31	12	34	3	89
	Mar	11	37	11	39	3	101
	Apr	15	20	29	57	3	124
	May	11	20	18	64	4	117
	Jun	14	25	19	78	2	138
	Jul	9	27	21	78	4	139
	Aug	10	30	19	60	4	123
	Sep	8	29	20	40	4	101
	Oct	9	24	15	38	5	91
	Nov	9	24	11	40	4	88
	Dec	4	21	7	48	4	84



Table 2: Composite Index of Livestock marketed

		Cattle		Small stock		Pigs	Total
		Export	Live	Export	Live		
2010	Jan	9	11	47	11	3	80
	Feb	8	11	78	23	3	124
	Mar	13	16	105	44	4	182
	Apr	19	12	114	35	4	185
	May	17	6	65	12	3	103
	Jun	18	17	105	41	3	183
	Jul	18	22	80	47	3	170
	Aug	12	24	69	37	3	145
	Sep	8	22	55	37	3	125
	Oct	10	19	52	31	4	115
	Nov	10	21	58	20	2	111
	Dec	6	13	75	30	1	124
2011	Jan	9	14	43	16	3	84
	Feb	8	18	75	15	4	120
	Mar	13	19	110	26	4	172
	Apr	19	14	78	27	4	143
	May	17	17	89	40	3	166
	Jun	18	16	76	31	3	143
	Jul	18	21	71	38	3	150
	Aug	12	21	43	26	3	104
	Sep	8	15	35	24	3	85
	Oct	10	20	36	27	4	96
	Nov	10	15	49	18	2	94
	Dec	6	10	73	32	1	122
2012	Jan	7	10	49	14	3	83
	Feb	8	7	77	20	3	115
	Mar	14	9	97	33	3	155
	Apr	16	7	90	27	6	146
	May	15	6	88	31	3	143
	Jun	17	9	83	37	3	149
	Jul	20	11	80	35	3	149
	Aug	12	18	62	31	1	124
	Sep	8	14	63	32	4	121
	Oct	11	17	38	30	5	103
	Nov	9	18	62	20	1	110
	Dec	6	8	55	29	1	99
2013	Jan	10	11	61	14	4	100
	Feb	10	19	95	19	3	146
	Mar	10	28	124	38	3	202
	Apr	16	25	94	53	3	191
	May	22	25	93	46	4	190
	Jun	19	26	78	65	3	191
	Jul	12	33	73	38	2	159
	Aug	12	31	73	46	3	165
	Sep	12	24	61	38	4	138
	Oct	11	20	62	30	4	126
	Nov	13	18	64	29	4	128
	Dec	6	10	51	40	4	111

Table 2. Continue...

2015	Jan	98.4	109.2	45.8	66.8	143.3	89.2
	Feb	70.7	152.7	61.4	110.0	112.2	98.6
	Mar	100.6	162.6	103.2	172.0	91.4	126.0
	Apr	107.8	112.6	63.7	140.8	95.2	102.1
	May	126.3	83.8	83.0	259.9	83.5	114.1
	Jun	137.5	134.6	75.4	226.5	132.6	130.8
	Jul	137.0	154.1	65.9	239.7	142.7	136.0
	Aug	76.7	208.0	41.2	213.7	122.9	122.7
	Sep	89.9	159.7	36.1	151.0	93.5	104.9
	Oct	94.3	173.2	97.3	118.4	97.2	121.1
	Nov	88.6	70.4	51.8	41.4	34.6	68.8
	Dec	42.1	61.1	96.9	151.7	113.4	72.3
2016	Jan	76.0	51.2	21.8	68.9	137.2	58.4
	Feb	60.0	107.1	39.0	116.5	137.8	77.7
	Mar	91.9	139.7	60.4	105.4	117.0	101.7
	Apr	112.0	146.5	75.0	153.9	112.4	118.1
	May	86.8	137.9	53.3	211.6	137.6	108.0
	Jun	102.6	196.6	51.5	254.6	128.5	134.4
	Jul	132.8	0.0	49.8	59.7	134.1	68.0
	Aug	87.8	1.2	54.4	96.9	125.5	56.5
	Sep	116.8	6.9	39.3	90.0	122.5	64.4
	Oct	82.0	43.4	28.8	105.5	123.9	62.4
	Nov	88.1	111.5	26.1	87.5	148.6	84.0
	Dec	32.0	86.9	18.4	123.8	135.0	57.8
2017	Jan	37.9	69.8	15.6	56.6	126.9	47.8
	Feb	81.1	135.0	16.7	139.2	127.1	90.3
	Mar	98.6	143.1	32.6	165.7	143.9	105.4
	Apr	90.4	157.0	26.8	174.3	129.0	105.6
	May	107.2	167.3	21.6	217.9	138.7	117.8
	Jun	152.8	201.4	15.5	213.2	124.0	141.8
	Jul	125.1	227.1	16.2	177.3	140.5	137.5
	Aug	111.8	262.0	21.1	177.9	101.8	143.0
	Sep	123.0	168.2	44.1	99.0	80.3	115.8
	Oct	81.9	175.8	27.4	105.0	86.0	100.7
	Nov	94.9	145.9	25.2	92.5	137.7	96.6
	Dec	66.3	103.3	22.3	126.5	109.5	74.9
2018	Jan	72.7	110.0	17.0	43.3	128.8	71.4
	Feb	69.3	193.4	15.9	112.6	99.1	100.2
	Mar	93.8	229.1	14.0	128.5	100.3	120.7
	Apr	126.6	124.5	38.4	186.2	98.2	110.9
	May	95.1	123.6	23.9	210.1	124.7	99.5
	Jun	118.8	157.3	24.6	254.4	66.1	119.9
	Jul	76.4	168.9	27.5	254.7	134.5	111.8
	Aug	82.4	188.2	24.8	195.9	137.4	114.1
	Sep	69.5	176.7	26.0	130.7	136.6	100.5
	Oct	75.0	145.7	20.0	124.8	171.9	92.6
	Nov	70.5	146.3	15.1	132.1	140.0	89.5
	Dec	34.9	130.7	8.9	156.4	125.4	72.5



Methodology

Data Sources: The data are obtained from the Meat Board of Namibia and the Agricultural Union of Namibia

Base year: Livestock sectoral report is harmonised with the Quarterly and annual national accounts base year 2010.

Calculations of index: The index is calculated based on the 2010 base year volumes and 2010 weights. The index is a magnitude of the volume changes over time, with reference to the volume of the base year 2010. Index is calculated as a ratio of a volume of a specific component in a specific month to the total volume of that component in 2010.