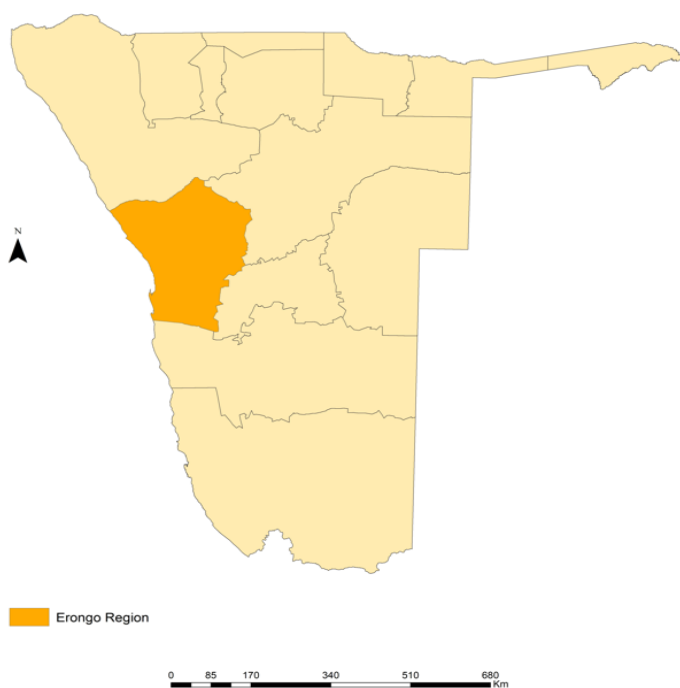




Census of Business Establishments Erongo Regional Profile 2019/21

July 2022



Namibia Statistics Agency
P.O. Box 2133
FGI House, Post Street Mall
Windhoek Namibia

Tel: +264 61 431 3200
Fax: +264 61 431 3253
Email: info@nsa.org.na
www.nsa.org.na

MISSION STATEMENT

In a coordinated manner we produce and disseminate relevant, quality, and timely statistics that are fit-for-purpose in accordance with international standards and best practice

VISION STATEMENT

Be a high-performance institution in statistics delivery

CORE VALUES

Performance

Integrity

Service focus

Transparency

Accuracy

Partnership

Preface

The Namibia Statistics Agency (NSA) conducted the 2019/21 Census of Establishments between October 2019 and April 2021. The Census of Establishments was conducted together with the Population and Housing Census Mapping exercise that visited all physical structures in the country. This was the first Census of Business Establishments to be carried out by the NSA.

The Erongo Census of Business Establishments regional profile is the first of its kind and is released based on the 2019/21 establishment census data. This regional profile provides basic data analysis with highlights of the 2019/21 Census of Establishments carried specifically in the region. Furthermore, the report produces an analysis on businesses demography, economic sectors, employment, and revenues generation in all constituencies found in Erongo region between October 2019 and April 2021.

NSA extend its gratitude to all stakeholders for participation the establishment's census, amidst the COVID-19 pandemic without which this report would have not been possible. More specifically, the business community as well as households that responded to the NSA by providing the required information. NSA is grateful to the participants who contributed to ensuring that this census was a success. In particular, the technical team that ensured that timely completion of the establishment's census activity is achieved.

Finally, NSA is hopeful that the users of this report will find its contents useful for their decision making and planning purposes, including business investments.



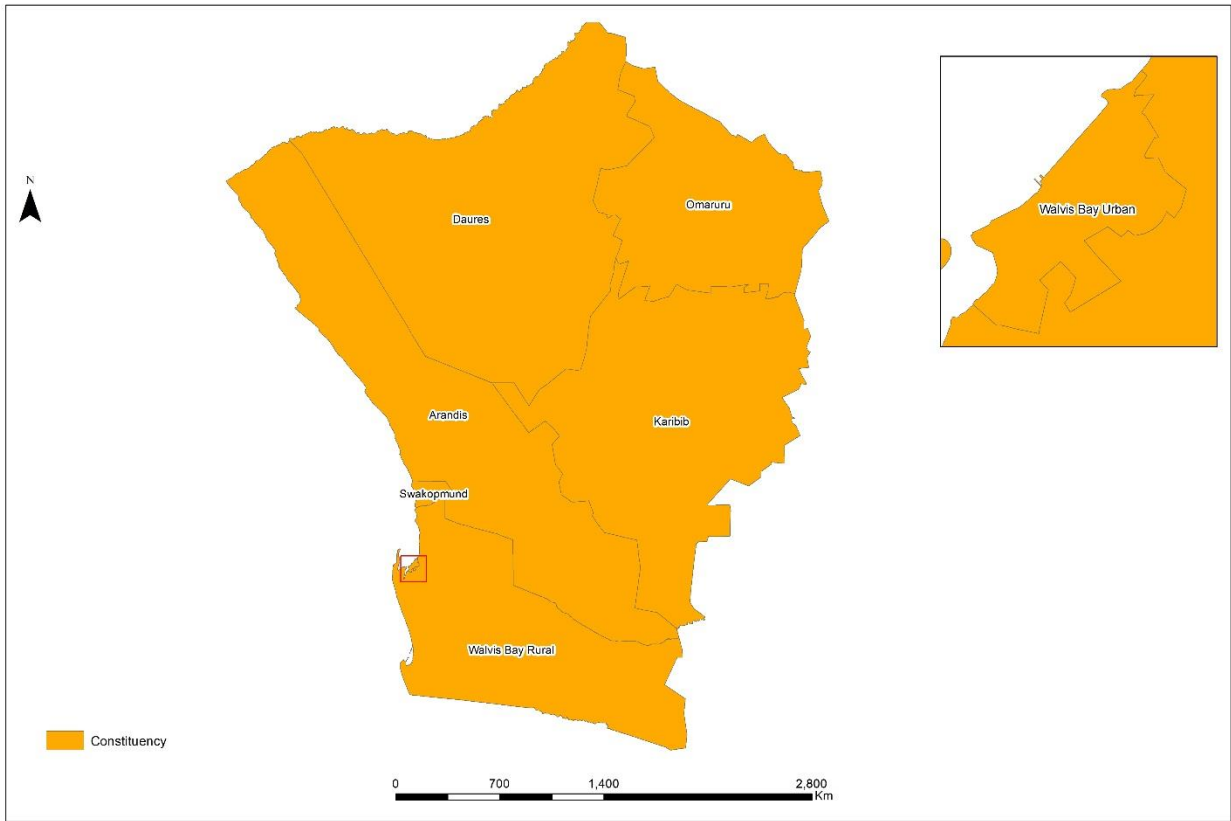
Alex Shimuafeni

Statistician-General & CEO
July 2022

Table of Contents

| | |
|---|-----------|
| Preface | 3 |
| List of Acronyms..... | 6 |
| Executive Summary | 7 |
| CHAPTER 1: INTRODUCTION AND OVERVIEW | 8 |
| 1.1 Background | 8 |
| 1.2 Objectives..... | 8 |
| 1.3 Limitations..... | 8 |
| 1.4 Response rates..... | 9 |
| CHAPTER 2: MAIN FINDINGS..... | 10 |
| 2.1 Demographic characteristics..... | 10 |
| 2.1.1 Establishments by constituency..... | 10 |
| 2.1.2 Responding establishments by urban and rural areas..... | 11 |
| 2.2 Working status | 11 |
| 2.2.1 Closed Establishments | 11 |
| 2.2.2 Operational establishments..... | 12 |
| 2.3 Establishment size..... | 12 |
| 2.3.1 Establishments by size and constituency..... | 12 |
| 2.4 Period of operational commencement..... | 13 |
| 2.4.1 Age Analysis | 13 |
| 2.4.2 Distribution of establishments by period of starting operation | 13 |
| 2.4.3 Economic activity distribution of establishments by year of starting operation..... | 14 |
| 2.5 Establishments ownership | 15 |
| 2.5.1 Establishments by type of ownership..... | 15 |
| 2.5.2 Establishments by type of ownership and constituency | 16 |
| 2.5.3 Establishments by type of ownership and economic activity | 17 |
| 2.6 Employment..... | 19 |
| 2.6.1 Employment by nationality and constituency | 19 |
| 2.6.2 Employment by nationality and economic activities..... | 19 |
| 2.7 Economic activities..... | 20 |
| 2.7.1 Establishments by economic activities | 20 |
| Annexure I List of Terms and Definitions | 22 |

ERONGO REGION DEMARCATION BY CONSTITUENCY



List of Acronyms

| | |
|------|---|
| CAPI | Computer Aided Personal Interview |
| EA | Enumeration Area |
| GDP | Gross Domestic Product |
| GIS | Geographic Information Systems |
| ISIC | International Standard Industry Classification of all economic activities |
| MSME | Micro, small, medium enterprises |
| NSA | Namibia Statistics Agency |
| SBR | Statistical Business Register |
| SNA | System of National Accounts |

Executive Summary

The Census of Business Establishments was conducted from October 2019 to April 2021. It covered all business establishments countrywide with a fixed location, irrespective of the number of employees except for open market and communal farming activities. In addition, establishments that were attached to household structures were excluded. The Census covered all the economic sectors as spelt out in the International Standard Industrial Classification of all Economic Activities (ISIC) Revision 4. Hence for the census of establishments undertaking, grouping of establishments was carried out in compliance with the ISIC Rev.4.

Number of establishments: The total number of establishments contacted in the region were 3,981. Swakopmund constituency had the highest responding establishments accounting for 35.7 percent of the total, followed by Walvis Bay Urban constituency (33.1%). Whilst Darues constituency recorded the least number of establishments of 4.2 percent.

Size of establishments: The census revealed that most establishments (3,286) were characterized as micro establishments, followed by small establishments (453) and in the third-place medium establishments (195). Only 47 of establishments constituted as large establishments.

Ownership: The census revealed that 44.7 percent of establishments (1,779) were classified as Sole proprietors, while 28.4 percent (1,131) were classified as close cooperation. The least type of ownerships were Limited liability companies (Public) and Partnerships that recorded 0.3 percent (10 establishments) and 1.5 percent (58 establishments) in the region.

Employment: During the census period, establishments in all constituencies of Erongo reported to have a total of 42,472 employees. Most of these employees were recruited in 'Wholesale and retail trade' (8,091 employees) and Manufacturing (7,428 employees) sectors. In relation to nationality, the census revealed that 41,726 employees were Namibians while 746 were non-Namibians employees.

CHAPTER 1: INTRODUCTION AND OVERVIEW

1.1 Background

A Census of Business Establishments is a statistical activity undertaken to collect comprehensive information on the profile and structure of business activities in an economy. The census collects structural information about each business, such as name, economic activity, turnover, location, and employment. This structural information is central to the collection of business statistics since it enables one to identify and to precisely describe each business' participation in the economy. It provides a frame from which a sample that represents a population of business establishments can be selected.

It is against this background that the NSA conducted the first census. The census was carried out together with the 2019/21 Population and Housing Census Mapping, which commenced in October 2019 and ended April 2021. The extended period of enumeration was mainly caused by COVID-19 pandemic measures that were put in place to curb the spread of the virus.

The results in this publication are presented in tables and graphs with distribution, numbers, and percentages of different estimates. Hyphen (-) and zero (0) observed in the tables represents a value of zero and insignificant values, respectively.

This report provides detailed basic highlights from the Census mapping including detailed analysis on the structural and demographic characteristics of establishments in the Erongo region.

1.2 Objectives

The main objectives of the Census of Business Establishments were to provide:

- Detailed structural and demographic characteristics of establishments.
- Statistical information towards enriching the Statistical Business Register (SBR).
- A frozen frame of establishments at a specific time.
- A display of geographic distribution of economic activities

1.3 Limitations

Due to the prevalence of the COVID-19 pandemic, a prolonged data collection process was observed, which had an impact on the response rate of the census across constituencies.

Response rates

The overall response rate for the establishments in Erongo region was 69.0 percent. Walvis Bay Rural (77.2%) and Swakopmund (76.9%) constituencies recorded the highest response rates. While Daures constituency registered the lowest response rate of 44.3 percent (Table 1).

Table 1: Response rate by constituency

| Constituency | Total Number of establishments | Non-response | | Response | |
|----------------------|--------------------------------|--------------|-------------|--------------|-------------|
| | | Number | % | Number | % |
| Arandis | 352 | 127 | 36.1 | 225 | 63.9 |
| Daures | 370 | 206 | 55.7 | 164 | 44.3 |
| Karibib | 400 | 134 | 33.5 | 266 | 66.5 |
| Omaruru | 284 | 86 | 30.3 | 198 | 69.7 |
| Swakopmund | 1,852 | 428 | 23.1 | 1,424 | 76.9 |
| Walvis Bay Rural | 500 | 114 | 22.8 | 386 | 77.2 |
| Walvis Bay Urban | 2,014 | 696 | 34.6 | 1,318 | 65.4 |
| Erongo region | 5,772 | 1,791 | 31.0 | 3,981 | 69.0 |

CHAPTER 2: MAIN FINDINGS

2.1 Demographic characteristics

2.1.1 Establishments by constituency

Erongo region is situated in the western part of Namibia, with a geographical size covering 63,639 km², comprising of 7 constituencies. The responding establishments in Erongo region were 3,981 (Table 2). According to the Census of Business Establishments 2019/21 report, Erongo region ranked 6th in terms of regions with the highest number of responding establishments in Namibia with a contribution of 6.5 percent.

Table 2: Distribution of responding establishment by constituency

| Constituency | Number | % |
|----------------------|--------------|--------------|
| Arandis | 225 | 5.7 |
| Daures | 168 | 4.2 |
| Karibib | 265 | 6.7 |
| Omaruru | 198 | 5.0 |
| Swakopmund | 1,422 | 35.7 |
| Walvis Bay Rural | 385 | 9.7 |
| Walvis Bay Urban | 1,318 | 33.1 |
| Erongo region | 3,981 | 100.0 |

The percentage distribution of responding establishments is presented in Figure 1. It is observed that Swakopmund constituency had the highest number of responding establishments (35.7%) followed by Walvis Bay Urban (33.1%), and Walvis Bay Rural constituency (9.7%), whilst Daures constituency recorded the least number of responding establishments at 4.2 percent.

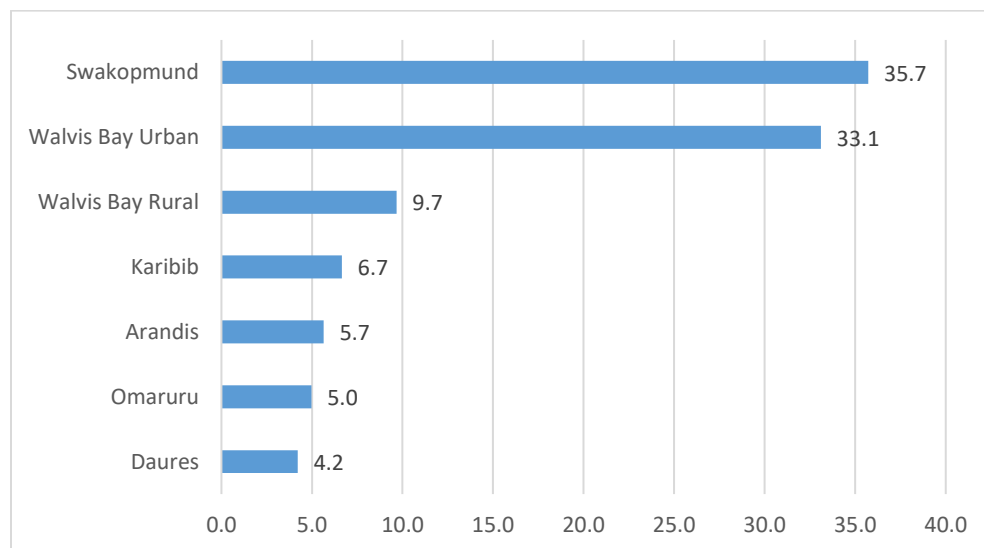


Figure 1: Percentage distribution of responding establishments

2.1.2 Responding establishments by urban and rural areas

Figure 2 depicts information on responding establishments by urban and rural areas. Most of the establishments (92.9%) were operating in urban area while 7.1 percent of the responding establishments were found to be operating in the rural area.

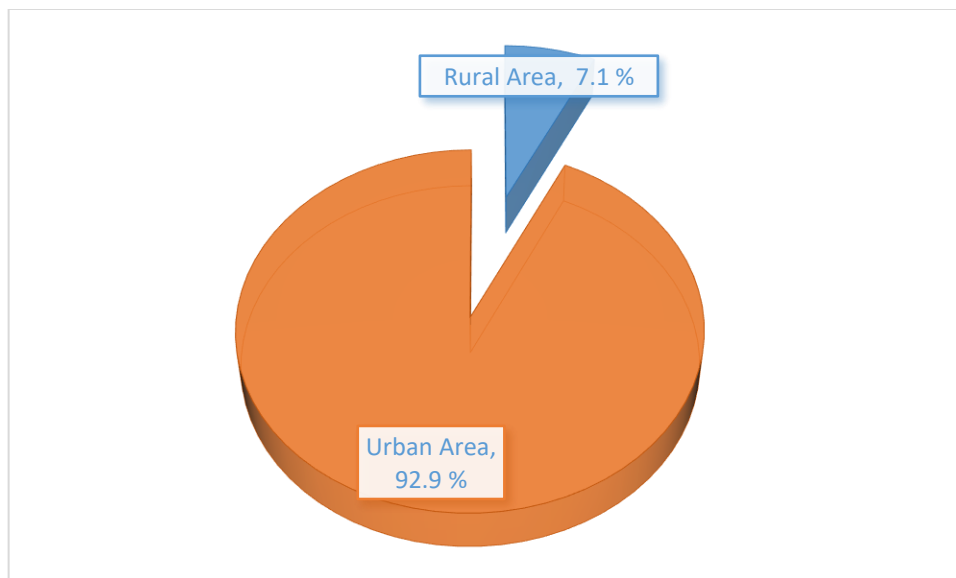


Figure 2: Share of responding establishments by urban and rural areas

2.2 Working status

2.2.1 Closed Establishments

The census sought information on business establishments that were temporarily and permanently closed. Reason cited by respondents for the closures were mainly due to the impact of COVID-19 pandemic. The results presented in Table 3 reveals that a total of 36 establishments were non-operational, of which 34 establishments were temporarily closed while 2 establishments reported to have closed permanently.

Closed establishments were mainly prominent in Swakopmund and Walvis Bay Urban constituencies with each recording 19.4 percent. Whereas the least (8.3%) of establishments that closed where in Daures constituency.

Table 3: Distribution of closed establishments by constituency

| Constituency | Permanently closed | | Temporarily closed | | Total number closed | |
|----------------------|--------------------|------------|--------------------|--------------|---------------------|--------------|
| | Number | % | Number | % | Number | % |
| Arandis | - | - | 4 | 11.8 | 4 | 11.1 |
| Daures | - | - | 3 | 8.8 | 3 | 8.3 |
| Karibib | - | - | 5 | 14.7 | 5 | 13.9 |
| Omaruru | - | - | 5 | 14.7 | 5 | 13.9 |
| Swakopmund | - | - | 7 | 20.6 | 7 | 19.4 |
| Walvis Bay Rural | - | - | 5 | 14.7 | 5 | 13.9 |
| Walvis Bay Urban | 2 | 100.0 | 5 | 14.7 | 7 | 19.4 |
| Erongo region | 2 | 100 | 34 | 100.0 | 36 | 100.0 |

2. 2.2 Operational establishments

Table 4 depicts the distribution of establishments that were operational by constituency. The number of establishments that were operational in the region amounted to 3,945. Swakopmund constituency ranked the highest with 1,415 establishments.

On the contrary, the lowest number of operational establishments were found in Daures and Omaruru constituencies with 165 establishments (4.2%) and 193 establishments (4.9%), respectively.

Table 4: Distribution of operational establishments by constituency

| Constituency | Operational establishments | |
|----------------------|----------------------------|--------------|
| | Number | % |
| Arandis | 221 | 5.6 |
| Daures | 165 | 4.2 |
| Karibib | 260 | 6.6 |
| Omaruru | 193 | 4.9 |
| Swakopmund | 1,415 | 35.9 |
| Walvis Bay Rural | 380 | 9.6 |
| Walvis Bay Urban | 1,311 | 33.2 |
| Erongo region | 3,945 | 100.0 |

2.3 Establishment size¹

2.3.1 Establishments by size and constituency

In terms of the distribution of the establishments by size as presented in Table 5 the region is immersed with micro establishments (3,286), followed by small establishments (453) and medium establishments (195). Furthermore, the results shows that only 47 large establishments were registered in the region.

At constituency level, micro establishments were largely observed in Walvis Bay Urban and Swakopmund constituencies with 68.1 percent and 12.8 percent of establishments respectively. On the other hand, Walvis Bay Rural constituency registered no micro establishments. Similarly, the highest proportion of large establishments were recorded in Walvis Bay Urban (40.4%) and Swakopmund (33.8%) constituencies respectively.

Table 5: Percentage distribution of establishments by employee size and constituency

| Constituency | Establishment size | | | | Total Number of Establishments (%) |
|--------------|--------------------|-----------------|------------------|---------------|------------------------------------|
| | Micro (1- 10) | Small (11 - 30) | Medium (31 -100) | Large (> 100) | |
| Arandis | 4.3 | 5.1 | 5.9 | 4.0 | 5.7 |
| Daures | 2.1 | 2.6 | 4.2 | 5.3 | 4.2 |

¹ The size measures are based on the national MSME policy 2016 - 2021.

| | | | | | |
|---------------------------------------|--------------|--------------|--------------|--------------|--------------|
| Karibib | 8.5 | 5.1 | 6.8 | 6.0 | 6.7 |
| Omaruru | 4.3 | 3.1 | 4.7 | 7.9 | 5.0 |
| Swakopmund | 12.8 | 31.8 | 36.5 | 33.8 | 35.7 |
| Walvis Bay Rural | - | 5.6 | 11.0 | 2.6 | 9.7 |
| Walvis Bay Urban | 68.1 | 46.7 | 30.8 | 40.4 | 33.1 |
| Erongo region | 100.0 | 100.0 | 100.0 | 100.0 | 100.0 |
| Total Number of Establishments | 3,286 | 453 | 195 | 47 | 3,981 |

2.4 Period of operational commencement

2.4.1 Age Analysis

Table 6 shows the age-range of responding establishments based on their inception dates. At the time of the census, most establishments (47.1%) in the region were aged 6 to 10 years old. This was followed by 16.9 percent of establishments that were aged between 11 to 15 years old.

Table 6: Distribution of establishments by age

| Age in years | Number of establishments | % |
|----------------------|--------------------------|--------------|
| < 2 years | 411 | 10.3 |
| 2 years to 5 years | 590 | 14.8 |
| 6 years to 10 years | 1,874 | 47.1 |
| 11 years to 15 years | 673 | 16.9 |
| > 15 years | 433 | 10.9 |
| Erongo region | 3,981 | 100.0 |

2.4.2 Distribution of establishments by period of starting operation

The census also sought information on the year the establishments started with operations and using '2013 and before' as the base year. Out of 3,981 establishments that responded, most establishments (1,458) started operating during the period of '2013 and before' (Figure 3). In addition, a surge of 1,125 establishments started operating during the period of 2018 - 2019 while the lowest influx of 394 establishments started operating during the period of 2014 - 2015.

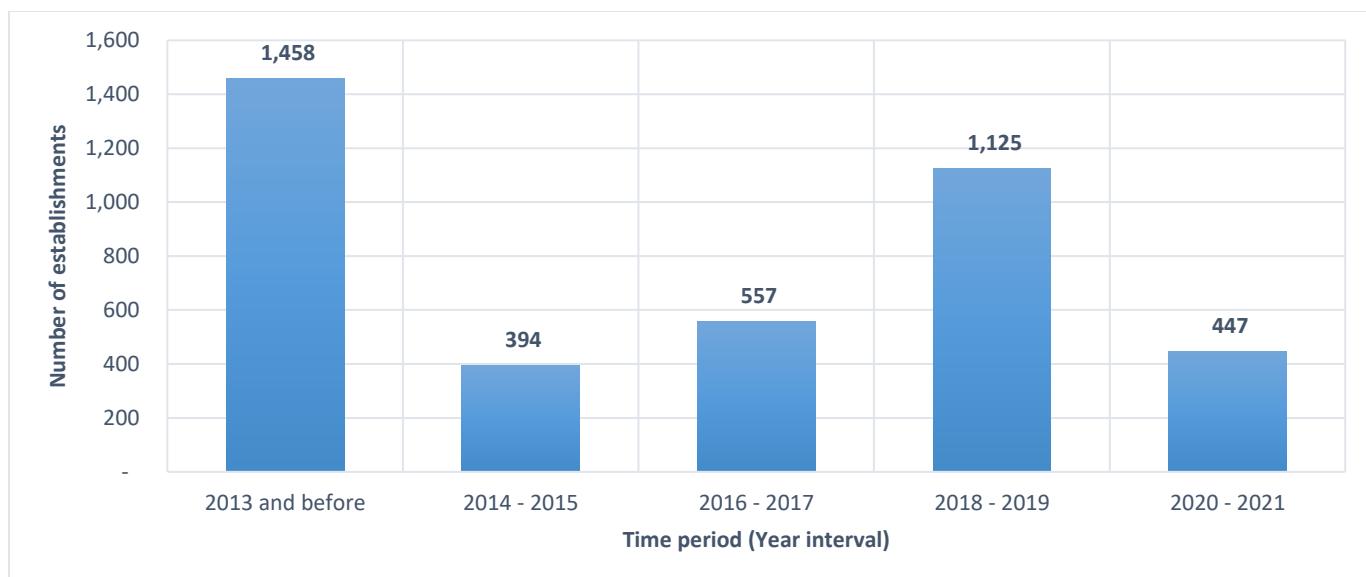


Figure 3: Number of establishments by period of starting operation

During the period 2018 - 2019, Walvis Bay Urban constituency (412 establishments) and Swakopmund constituency (345 establishments) recorded the highest number of new establishments (Table 7), an indication of favourable business climate in those constituencies.

Table 7: Distribution of establishments by year intervals and constituency

| Constituency | Year Intervals | | | | | Total Number of establishments |
|----------------------|-----------------|-------------|-------------|--------------|-------------|--------------------------------|
| | 2013 and before | 2014 - 2015 | 2016 - 2017 | 2018 - 2019 | 2020 - 2021 | |
| Arandis | 87 | 26 | 23 | 63 | 26 | 225 |
| Daures | 86 | 13 | 19 | 37 | 13 | 168 |
| Karibib | 94 | 23 | 29 | 82 | 37 | 265 |
| Omaruru | 100 | 13 | 18 | 50 | 17 | 198 |
| Swakopmund | 515 | 164 | 223 | 345 | 175 | 1,422 |
| Walvis Bay Rural | 87 | 37 | 43 | 136 | 82 | 385 |
| Walvis Bay Urban | 489 | 118 | 202 | 412 | 97 | 1,318 |
| Erongo region | 1,458 | 394 | 557 | 1,125 | 447 | 3,981 |

2.4.3 Economic activity distribution of establishments by year of starting operation

The census reveals a consistent surge of establishments over the years in 'Wholesale and retail trade' and 'Accommodation and food service activities' sectors as presented in Table 8. While for the same period, the number of emerging establishments in 'Information and communication', Water supply and Electricity supply sectors were low.

Table 8: Distribution of establishments by starting period of operations and economic activity

| Sector | Year interval | | | | | Total number of establishments |
|---|-----------------|-------------|-------------|--------------|-------------|--------------------------------|
| | 2013 and before | 2014 - 2015 | 2016 - 2017 | 2018 - 2019 | 2020 - 2021 | |
| Agriculture, forestry, and fishing | 24 | 4 | 4 | 11 | 4 | 47 |
| Mining and quarrying | 9 | 2 | 4 | 6 | 1 | 22 |
| Manufacturing | 152 | 32 | 36 | 101 | 32 | 353 |
| Electricity supply | 7 | 2 | 1 | 6 | 1 | 17 |
| Water supply | 3 | 3 | 2 | 5 | - | 13 |
| Construction | 29 | 6 | 11 | 8 | 2 | 56 |
| Wholesale and retail trade | 401 | 142 | 255 | 447 | 251 | 1,496 |
| Transportation and storage | 55 | 7 | 12 | 21 | 1 | 96 |
| Accommodation and food service activities | 290 | 78 | 106 | 212 | 83 | 769 |
| Information and communication | 11 | 2 | 5 | 2 | - | 20 |
| Financial and insurance activities | 27 | 10 | 16 | 24 | 5 | 82 |
| Real estate activities | 10 | 4 | 4 | 5 | 1 | 24 |
| Professional, scientific, and technical activities | 49 | 16 | 12 | 24 | 2 | 103 |
| Administrative and support service activities | 35 | 11 | 7 | 20 | 8 | 81 |
| Public administration and defence | 64 | 7 | 5 | 20 | - | 96 |
| Education | 98 | 17 | 20 | 49 | 15 | 199 |
| Human health and social work activities | 54 | 16 | 19 | 42 | 4 | 135 |
| Arts, entertainment, and recreation | 27 | 4 | 4 | 21 | 3 | 59 |
| Other service activities | 113 | 31 | 34 | 101 | 34 | 313 |
| Activities of extraterritorial organizations and bodies | - | - | - | - | - | - |
| Erongo region | 1,458 | 394 | 557 | 1,125 | 447 | 3,981 |

2.5 Establishments ownership

2.5.1 Establishments by type of ownership

Majority of the establishments (44.7%) were found to be operating as Sole proprietors followed by Close cooperation (28.4%) and Limited liability companies (private) with 15.0 percent as displayed in Figure 4. The least type of ownerships were Limited liability companies (public) with 0.3 percent.

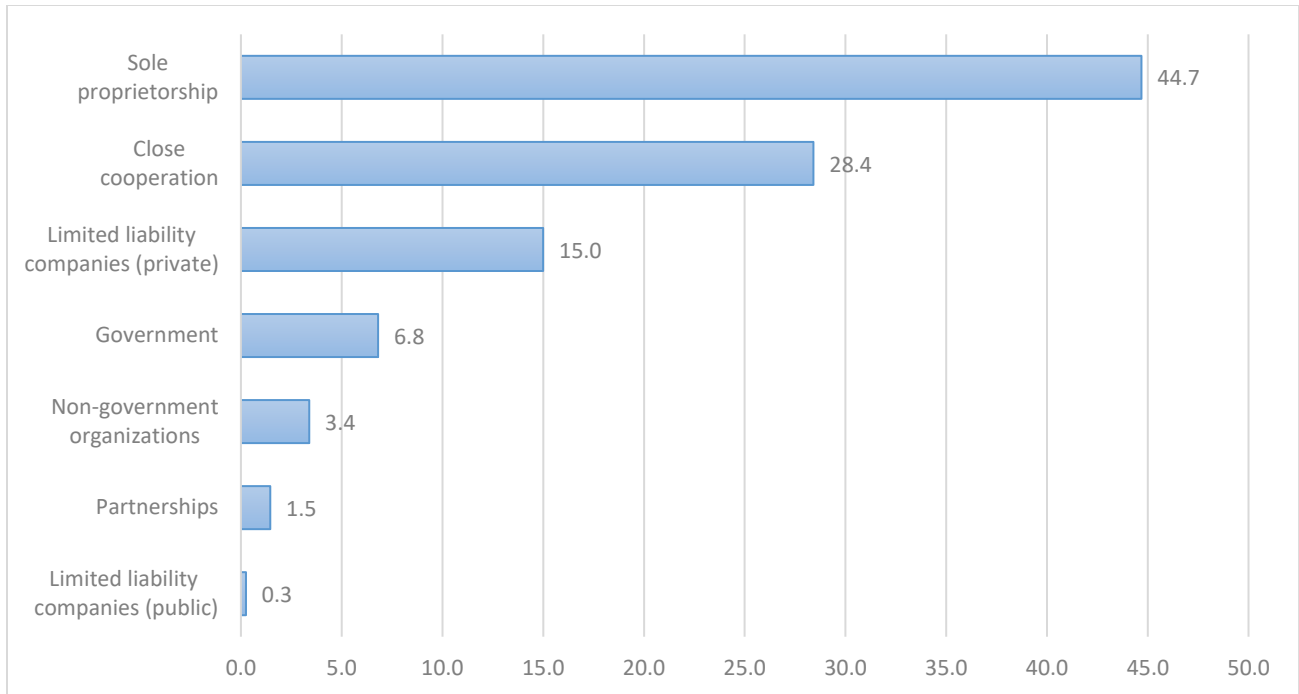


Figure 4: Percentage distribution of responding establishments by type of ownership

2.5.2 Establishments by type of ownership and constituency

The census reveals that out of 3,981 establishments in Erongo region, most establishments (1,779) were trading as Sole proprietors (Table 9). These establishments were mainly situated in Swakopmund constituency with 645 establishments, followed by Walvis Bay Urban constituency with 458 establishments. Whereas Omaruru constituency recorded the least number of Sole proprietors with 76 establishments only.

Furthermore, the findings indicate that Close cooperation were prominent in Walvis Bay Urban constituency with 450 establishments, followed by Swakopmund constituency with 425 establishments. While Daures constituency recorded the least number of establishments with 28 establishments.

Table 9: Distribution of establishments by type of ownership and constituency

| Constituency | Sole proprietorship | Partnerships | Close cooperation | Government | Limited liability companies (private) | Limited liability companies (public) | Non-government organizations |
|--------------|---------------------|--------------|-------------------|------------|---------------------------------------|--------------------------------------|------------------------------|
| Arandis | 100 | 2 | 67 | 17 | 24 | 2 | 13 |
| Daures | 84 | - | 28 | 44 | 3 | - | 9 |
| Karibib | 127 | 2 | 46 | 44 | 31 | 1 | 14 |
| Omaruru | 76 | 3 | 65 | 21 | 20 | 1 | 12 |

| | | | | | | | |
|----------------------|--------------|-----------|--------------|------------|------------|-----------|------------|
| Swakopmund | 645 | 28 | 425 | 72 | 209 | 4 | 39 |
| Walvis Bay Rural | 289 | - | 50 | 17 | 14 | - | 15 |
| Walvis Bay Urban | 458 | 23 | 450 | 56 | 296 | 2 | 33 |
| Erongo region | 1,779 | 58 | 1,131 | 271 | 597 | 10 | 135 |

2.5.3 Establishments by type of ownership and economic activity

In terms of distribution of economic activities by ownership status, most Sole proprietors amounting to 341 establishments were operating in 'Wholesale and retail trade' sector (Table 10

Table 10). The least Sole proprietors were operating within 'Public administration and defence' sector with only 4 establishments.

Furthermore, the highest number of establishments operating as Close cooperation were involved in the 'Wholesale and retail trade' sector, which accounted for 268 establishments, followed by Manufacturing sector with 55 establishments.

Table 10: Distribution of establishments by type of ownership and economic activities

| Sector | Ownership status | | | | | | | Total Number of establishments |
|--|---------------------|--------------|-------------------|------------|---------------------------------------|--------------------------------------|------------------------------|--------------------------------|
| | Sole proprietorship | Partnerships | Close cooperation | Government | Limited liability companies (private) | Limited liability companies (public) | Non-government organizations | |
| Agriculture, forestry, and fishing | 27 | - | 16 | - | 1 | 3 | - | 47 |
| Mining and quarrying | 6 | - | 15 | - | - | - | 1 | 22 |
| Manufacturing | 196 | - | 55 | - | - | 9 | 93 | 353 |
| Electricity supply | 6 | 1 | 10 | - | - | - | - | 17 |
| Water supply | 7 | 1 | 3 | - | - | - | 2 | 13 |
| Construction | 41 | 2 | 10 | - | - | 1 | 2 | 56 |
| Wholesale and retail trade | 341 | 3 | 268 | - | - | 7 | 877 | 1,496 |
| Transportation and storage | 40 | 3 | 50 | - | - | 1 | 2 | 96 |
| Accommodation and food service activities | 195 | 23 | 43 | - | 9 | - | 499 | 769 |
| Information and communication | 6 | 2 | 10 | - | - | - | 2 | 20 |
| Financial and insurance activities | 23 | 1 | 37 | 10 | - | 3 | 8 | 82 |
| Real estate activities | 16 | 1 | 2 | - | - | 3 | 2 | 24 |
| Professional, scientific, and technical activities | 39 | 15 | 19 | - | 1 | 13 | 16 | 103 |
| Administrative and support service activities | 51 | 3 | 15 | - | - | - | 12 | 81 |
| Public administration and defence | 4 | 87 | 3 | - | 2 | - | - | 96 |

| | | | | | | | | |
|---|--------------|-----------|--------------|------------|------------|-----------|------------|--------------|
| Education | 28 | 87 | 8 | - | 15 | - | 61 | 199 |
| Human health and social work activities | 27 | 31 | 22 | - | 14 | 18 | 23 | 135 |
| Arts, entertainment, and recreation | 25 | 9 | 6 | - | 4 | - | 15 | 59 |
| Other service activities | 53 | 2 | 5 | - | 89 | - | 164 | 313 |
| Activities of extraterritorial organizations and bodies | - | - | - | - | - | - | - | - |
| Erongo region | 1,779 | 58 | 1,131 | 271 | 597 | 10 | 135 | 3,981 |

2.5.4 Sole proprietors by sex and constituency

In terms of sole proprietor's ownership by sex, the census revealed that male ownership dominates, accounting for 57.9 percent of establishments as opposed to 42.1 percent of establishments owned by females.

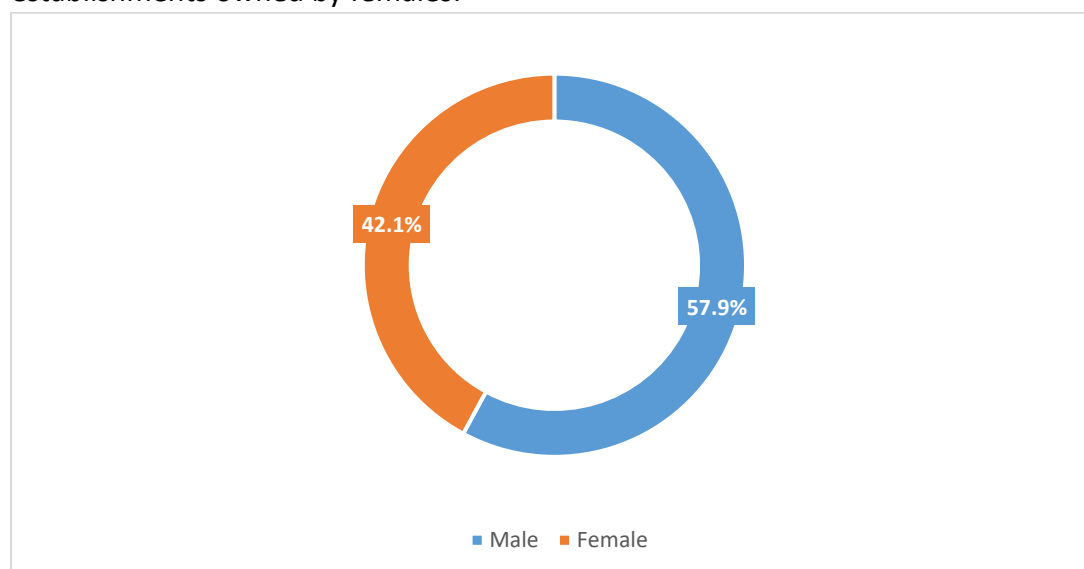


Figure 5: Share of Sole proprietors by sex

Table 11 presents the distribution of ownership of sole proprietorship establishments by sex and constituency. The result shows that 1,030 establishments were owned by males as compared to 749 establishments that were owned by females. This distribution is further reflected in all constituencies were male ownership dominated their female counterparts with Arandis constituency recording the lowest male dominance of 55.3 percent.

Table 11: Distribution of sole proprietorship by sex and constituency

| Constituency | Sex | | | | Total number |
|----------------------|------------|-------------|--------------|-------------|--------------|
| | Female | | Male | | |
| | Number | % | Number | % | |
| Arandis | 46 | 44.7 | 57 | 55.3 | 103 |
| Daures | 37 | 44.6 | 46 | 55.4 | 83 |
| Karibib | 56 | 43.8 | 72 | 56.3 | 128 |
| Omaruru | 29 | 39.2 | 45 | 60.8 | 74 |
| Swakopmund | 295 | 45.7 | 350 | 54.3 | 645 |
| Walvis Bay Rural | 116 | 40.3 | 172 | 59.7 | 288 |
| Walvis Bay Urban | 170 | 37.1 | 288 | 62.9 | 458 |
| Erongo region | 749 | 42.1 | 1,030 | 57.9 | 1,779 |

2.6 Employment

2.6.1 Employment by nationality and constituency

The total number of employed persons in establishments for Erongo region stood at 42,472 employees. In terms of nationality, Namibian employees amounted to 41,726 compared to 746 non-Namibian employees. The regional proportion of non-Namibian employees to the total employment was 1.8 percent. At constituency level, the highest share of 1.9 percent was recorded in Walvis Bay Urban constituency (Table 12).

Table 12: Distribution of employees by nationality and constituency

| Constituency | Namibian Employees | | Non-Namibian employees | | Total employment |
|----------------------|--------------------|-------------|------------------------|------------|------------------|
| | Number | % | Number | % | |
| Arandis | 1,594 | 98.9 | 17 | 1.1 | 1,611 |
| Daures | 1,061 | 98.4 | 17 | 1.6 | 1,078 |
| Karibib | 2,373 | 98.2 | 44 | 1.8 | 2,417 |
| Omaruru | 1,731 | 98.6 | 24 | 1.4 | 1,755 |
| Swakopmund | 10,067 | 98.4 | 161 | 1.6 | 10,228 |
| Walvis Bay Rural | 1,354 | 98.8 | 17 | 1.2 | 1,371 |
| Walvis Bay Urban | 23,546 | 98.1 | 466 | 1.9 | 24,012 |
| Erongo region | 41,726 | 98.2 | 746 | 1.8 | 42,472 |

2.6.2 Employment by nationality and economic activities

The census further reveals that within the Erongo region, 'Wholesale and retail trade' sector employed the highest number of employees amounting to 8,091 followed by 7,428 employees in the Manufacturing sector. While, the least number of employees were found in Water supply and 'Information and Communication' sectors recording 107 employees and 111 employees, respectively.

The non-Namibian workforce were prominent in 'Agriculture, forestry, and fishing with 244 employees, followed by Manufacturing sector with 101 employees (Table 13).

Table 13: Distribution of employees by nationality and economic activities

| Sector | Namibian Employees | Non-Namibian employees | Total Employment |
|---|--------------------|------------------------|------------------|
| Agriculture, forestry, and fishing | 5,782 | 244 | 6,026 |
| Mining and quarrying | 621 | 12 | 633 |
| Manufacturing | 7,327 | 101 | 7,428 |
| Electricity supply | 193 | 1 | 194 |
| Water supply | 107 | - | 107 |
| Construction | 1,195 | 12 | 1,207 |
| Wholesale and retail trade | 8,007 | 84 | 8,091 |
| Transportation and storage | 2,176 | 64 | 2,240 |
| Accommodation and food service activities | 3,734 | 54 | 3,788 |
| Information and communication | 110 | 1 | 111 |
| Financial and insurance activities | 587 | 1 | 588 |
| Real estate activities | 117 | 1 | 118 |
| Professional, scientific, and technical activities | 945 | 19 | 964 |
| Administrative and support service activities | 3,030 | 7 | 3,037 |
| Public administration and defence | 2,469 | 13 | 2,482 |
| Education | 2,726 | 46 | 2,772 |
| Human health and social work activities | 1,373 | 67 | 1,440 |
| Arts, entertainment, and recreation | 266 | 1 | 267 |
| Other service activities | 961 | 18 | 979 |
| Activities of extraterritorial organizations and bodies | - | - | - |
| Erongo region | 41,726 | 746 | 42,472 |

2.7 Economic activities

2.7.1 Establishments by economic activities

The results in **Error! Reference source not found.**⁴ indicates that most establishments were operating in 'Wholesale and retail trade' sector accounting for 37.6 percent of the total responding establishments. This was followed by 'Accommodation and food service activities' sector with a share of 19.3 percent. On the other hand, the proportion of establishments operating in the Water supply and Electricity supply sectors were the least, accounting for 0.3 percent and 0.4 percent, respectively.

Table 14: Distribution of establishment by economic activities

| Sector | Number of establishments | % |
|---|--------------------------|--------------|
| Agriculture, forestry, and fishing | 47 | 1.2 |
| Mining and quarrying | 22 | 0.6 |
| Manufacturing | 353 | 8.9 |
| Electricity supply | 17 | 0.4 |
| Water supply | 13 | 0.3 |
| Construction | 56 | 1.4 |
| Wholesale and retail trade | 1,496 | 37.6 |
| Transportation and storage | 96 | 2.4 |
| Accommodation and food service activities | 769 | 19.3 |
| Information and communication | 20 | 0.5 |
| Financial and insurance activities | 82 | 2.1 |
| Real estate activities | 24 | 0.6 |
| Professional, scientific, and technical activities | 103 | 2.6 |
| Administrative and support service activities | 81 | 2.0 |
| Public administration and defence | 96 | 2.4 |
| Education | 199 | 5.0 |
| Human health and social work activities | 135 | 3.4 |
| Arts, entertainment, and recreation | 59 | 1.5 |
| Other service activities | 313 | 7.9 |
| Activities of extraterritorial organizations and bodies | - | - |
| Erongo region | 3,981 | 100.0 |

Annexure I List of Terms and Definitions

Concepts and definitions of the 2019 - 2021 establishment census was guided by 2008 SNA and ISIC revision 4:

- Branch:** A smaller establishment located away from the main office, generally referred to as subsidiaries, where a single production activity of the establishment is conducted.
- Census Mapping:** The process of dividing the country into smaller units of about equal population size, which will make it possible for an enumerator to enumerate the total population.
- Close Corporation Cc:** is a form of ownership that consist of a minimum of one and a maximum of ten members. The interest of member of the close corporation is expressed as a percentage. The name of the close corporation ends with 'CC'.
- Economic production:** Is an activity, carried out under the responsibility, control and management of an establishment that uses inputs of labour, capital, land to produce outputs of goods and services.
- Economic territory:** The area under the effective economic control of a single government, Economic territory has the dimensions of physical location as well as legal jurisdiction, so that corporations created under the law of that jurisdiction are part of that economy.
- Establishment Age:** Refers to the exact time when an establishment starting its initial starting dates with economic production. The variable captured the date, month, and year when the establishment started operating. To simplify the report, we grouped the establishment age into five cohorts.
- Establishment census:** Is a statistical undertaking on the full set of economic units belonging to a given population or universe. It is the complete enumeration of a population or groups at a point in time with respect to well defined characteristics.
- Establishment size:** the establishments size are based on the number of full time employees grouped in different categories.
- Employment:** As per the Labour Act “employer” means any person, including the State and a user enterprise referred to in section 128(1) who - (a) employs or provides work for, an individual and who remunerates or expressly or tacitly undertakes to remunerate that individual.
- Establishment:** Is a unit that is situated in a single location and in which only a single productive activity is carried out or in which the principal activity accounts for most of the value added.²
- Government:** Consists of institutional units aiming to fulfilling their potential responsibilities and their role of economic regulation, produce services (and possibly goods) for

² System of National Accounts

individuals or collective consumption mainly on a non-profit basis and redistribute income and wealth.

Household: A household usually consists of one or more persons, related or unrelated, who live together in the same house/homestead/compound, but not necessarily in the same dwelling unit and have the same or common catering or eating arrangement (cook and eat together), and are answerable to the same Head of household. It is important to remember that members who belong to the same household do not necessarily need to be related in blood or marriage.

Limited Liability Companies (Private): Refers to a legal entity that comprises of 1 – 50 members and has its own legal personality. The public cannot buy shares in a private company. The name of a private company ends with (Pty) Ltd, which mean proprietary limited.

Limited Liability Companies (Public): Is a publicly owned company, has a minimum of 7 shareholders, but maximum number of shareholders is only limited by the number of shares issued to the public. The public is invited to buy shares in a public company and these shares are publicly traded on the stock exchange.

Operational establishment: These refers to an establishment that is engaged into economic production during the period of census undertaking.

Partnerships: Refers to a form of business that comprises of 2 -20 partners. Under a partnership there is joint control and authority over aspects of the business.

Production Boundary: According to the SNA production boundary is the production of all goods and services produced as outputs destined for the market, whether for sale or barter. It also includes all goods or services provided free to individual households or collectively to the community by government units or NGOs.

Revenue: A measure of the inflow or increase in net assets generated by the sales made by a company. It reflects the amounts brought into the company by the sales process during a specified period.

Response rate: Is defined as the proportion (expressed in percentage) of establishments which responded to the census questionnaire to the total listed (mapped) establishments.

Non-government Organization: Are legal entities that are principally engaged in the production of non-profit services for households or the community at large and whose main resources are voluntary contributions.

Sole Proprietorship: Is referred to a sole trader or one person business it has only one owner. A sole proprietor has no legal personality. Therefore, the assets of the business belong to the owner and is personally liable for all debt and claims made against the business.