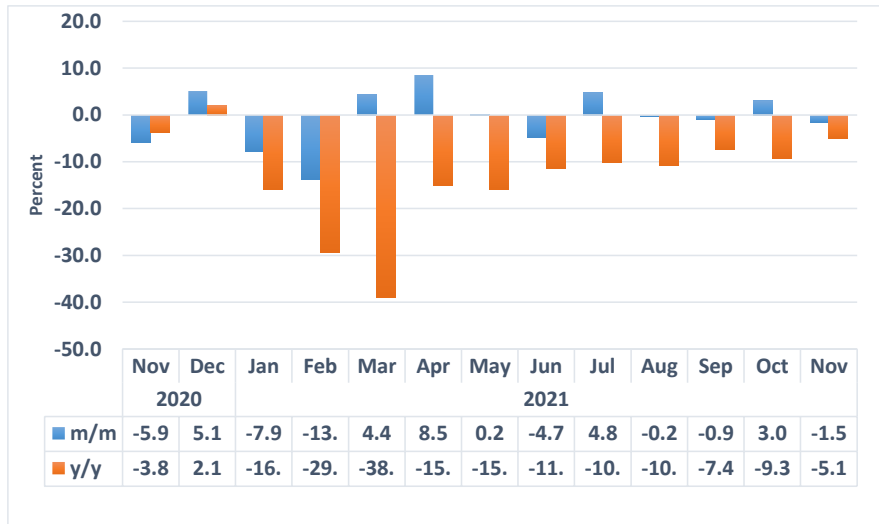




Electricity Sectoral Report November 2021

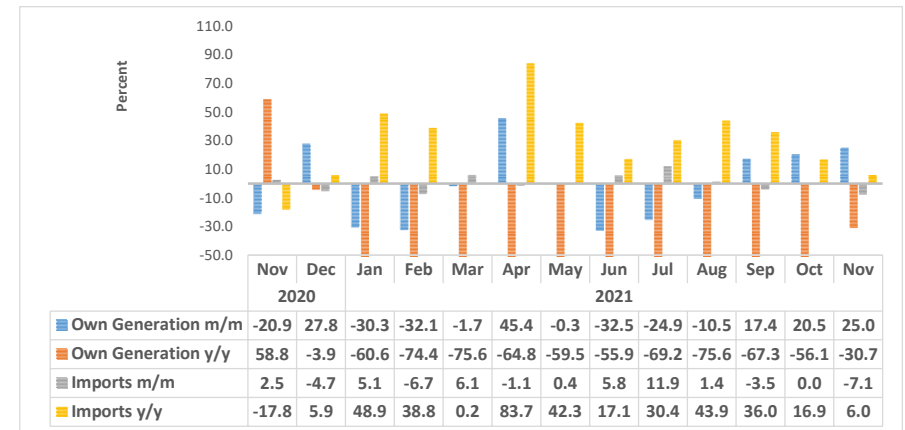
Chart 1: Electricity Sources Composite Index, Percent



- The **Electricity Sources Composite Index** that is composed of own generation (production) and imported electricity recorded a decline on a monthly basis of 1.5 percent in November 2021, whereas in October 2021 the index registered a growth of 3.0 percent. On yearly basis, the index recorded a reduction of 5.1 percent.
- The decline recorded on monthly basis was reflected in imported electricity that went down by 7.1 percent (Chart 2). This decline was mainly emanating from electricity sourced from Eskom Aggreneis-South Africa that recorded a decrease of 12.9 percent.
- Local production of electricity stood at 76 294 MWh in November 2021 compared to 61 058 MWh produced in October 2021. Most of the generation of electricity was mainly produced by the Independent Power

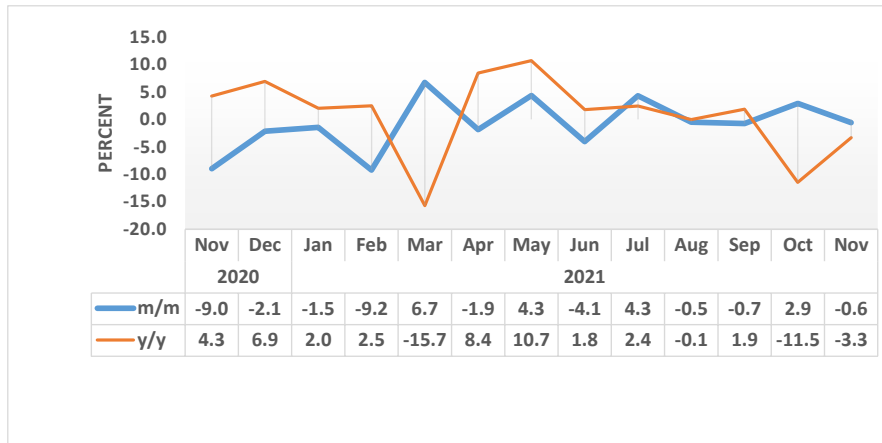
Producers (IPP), accounting for 50.3 percent of generated electricity while the rest was mainly produced from the Ruacana Power Station (43.9%).

Chart 2: Electricity Source Index, Percent



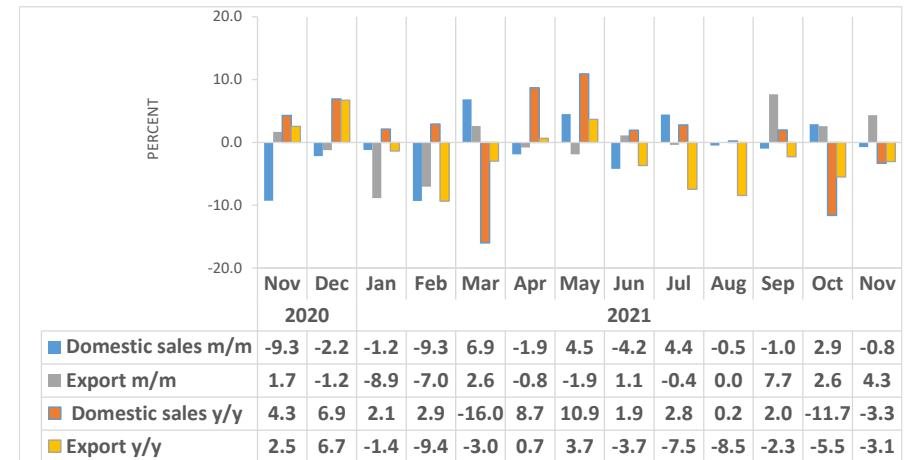
- The monthly **Import Index** was recorded a decline of 7.1 percent in November 2021, whereas 0.0 percent was registered in October 2021. Annually, electricity import index rose by 6.0 percent.
- In November 2021, a total of 270 322 MWh of electricity was imported in the country. The electricity was mainly sourced from South Africa (46.1%) followed by Zambia (25.9%).
- Zimbabwe supplied 13.7 percent of electricity required by Namibia while 10.5 percent of electricity was sourced from Day Ahead Market – APP.

Chart 3: Electricity Sales Composite Index, Percent



- The **Electricity Sales Composite Index** for November 2021 posted a monthly decline of 0.6 percent compared to an increase of 2.9 percent recorded in October 2021. However, the index recorded a decline of 3.3 percent year on year.
- The monthly decline in the index registered was due to decline in the Domestic Sale (-0.8%) Chart 4.

Chart 4: Electricity Sales Index, Percent



- The **Domestic Sales Index** recorded a decline of 0.8 percent month on month while registering a decline of 3.3 percent on an annual basis.
- The monthly decline in domestic sales mainly emanated from sales to mining (-8.5%) and Commercial-LPU (-2.2%). Sales to Eskom Orange River also recorded a decrease of 0.9 percent..
- For the month of November 2021 the amount of electricity sold on the domestic market stood at 299 292 MWh down from 301 575 MWh and 309 634 MWh recorded in the preceding month and corresponding month of 2020, respectively. In the review period, electricity sold in the domestic market was mainly sourced by the Redistributors – LPU (68.3%) followed by Mining which accounted for 23.1 percent.

- The **Export Sales Index** posted a monthly growth of 4.3 percent in November 2021 compared to 2.6 percent registered in October 2021. On an annual basis, the index went down by 3.1 percent.
- In the month of November 2021, Namibia exported 10 346 MWh of electricity. Angola accounted for 57.4 percent of electricity exports, followed by Botswana (37.1%) while South Africa accounted for 5.5 percent.

Table 1: Electricity SOURCES in MWH

Year	Month	Own generated	Import
2018	Jan	79,862	334,179
	Feb	197,034	207,219
	Mar	214,593	200,423
	Apr	260,294	127,802
	May	222,541	145,444
	Jun	99,652	274,653
	Jul	110,380	323,915
	Aug	85,206	271,109
	Sep	77,605	294,266
	Oct	61,374	324,465
	Nov	64,153	319,578
	Dec	83,455	307,166
2019	Jan	142,891	265,752
	Feb	123,392	248,783
	Mar	161,498	227,721
	Apr	172,656	178,848
	May	117,685	284,256
	Jun	71,677	313,783
	Jul	78,401	284,776
	Aug	69,310	309,423
	Sep	59,311	325,442
	Oct	61,458	333,984
	Nov	69,370	310,411
	Dec	146,604	229,566

Table 1: Electricity Sources In MWH Continue...

Year	Month	Own generated	Import
2020	Jan	249,327	171,655
	Feb	260,165	171,759
	Mar	268,742	252,506
	Apr	270,785	136,187
	May	234,883	176,429
	Jun	145,495	226,701
	Jul	156,692	227,982
	Aug	176,845	209,579
	Sep	155,062	213,956
	Oct	139,242	248,759
	Nov	110,168	255,038
	Dec	140,822	243,109
2021	Jan	98,191	255,534
	Feb	66,648	238,395
	Mar	65,547	252,906
	Apr	95,326	250,225
	May	95,027	251,119
	Jun	64,155	265,577
	Jul	48,192	297,297
	Aug	43,152	301,495
	Sep	50,664	290,922
	Oct	61,058	290,893
	Nov	76,294	270,322

Table 2: Electricity sources index (2015=100)

Year	Month	Own generated Index	Import Index	Electricity Sources Composite Index
2018	Jan	72.3	140.3	118.7
	Feb	178.3	87.0	115.9
	Mar	194.2	84.1	119.0
	Apr	235.6	53.6	111.3
	May	201.4	61.0	105.5
	Jun	90.2	115.3	107.3
	Jul	99.9	136.0	124.5
	Aug	77.1	113.8	102.2
	Sep	70.2	123.5	106.6
	Oct	55.5	136.2	110.6
	Nov	58.1	134.1	110.0
	Dec	75.5	128.9	112.0
2019	Jan	129.3	111.5	117.2
	Feb	111.7	104.4	106.7
	Mar	146.2	95.6	111.6
	Apr	156.3	75.1	100.8
	May	106.5	119.3	115.3
	Jun	64.9	131.7	110.5
	Jul	71.0	119.5	104.1
	Aug	62.7	129.9	108.6
	Sep	53.7	136.6	110.3
	Oct	55.6	140.2	113.4
	Nov	62.8	130.3	108.9
	Dec	132.7	96.4	107.9

Table 2: Electricity sources index (2015=100) Continue...

Year	Month	Own generated Index	Import Index	Electricity Sources Composite Index
2020	Jan	225.7	72.1	120.7
	Feb	235.5	72.1	123.9
	Mar	243.2	106.0	149.5
	Apr	245.1	57.2	116.7
	May	212.6	74.1	117.9
	Jun	131.7	95.2	106.7
	Jul	141.8	95.7	110.3
	Aug	160.1	88.0	110.8
	Sep	140.3	89.8	105.8
	Oct	126.0	104.4	111.3
	Nov	99.7	107.0	104.7
	Dec	127.5	102.0	110.1
2021	Jan	88.9	107.3	101.4
	Feb	60.3	100.1	87.5
	Mar	59.3	106.2	91.3
	Apr	86.3	105.0	99.1
	May	86.0	105.4	99.3
	Jun	58.1	111.5	94.6
	Jul	43.6	124.8	99.1
	Aug	39.1	126.5	98.8
	Sep	45.9	122.1	98.0
	Oct	55.3	122.1	100.9
	Nov	69.1	113.5	99.4

Table 3: Electricity Sales in MWH

Year	Month	Domestic Sales	Export Sales
2018	Jan	310,053	10,153
	Feb	279,129	9,518
	Mar	297,305	8,811
	Apr	302,402	9,387
	May	286,835	8,603
	Jun	289,537	8,749
	Jul	317,062	9,557
	Aug	288,276	9,000
	Sep	288,600	9,634
	Oct	295,518	9,643
	Nov	295,492	9,969
	Dec	282,672	10,445
2019	Jan	303,617	11,340
	Feb	274,852	10,343
	Mar	306,655	10,125
	Apr	280,791	9,942
	May	299,191	9,779
	Jun	281,389	9,279
	Jul	298,427	9,336
	Aug	271,582	9,578
	Sep	279,789	9,880
	Oct	289,128	10,391
	Nov	296,837	10,410
	Dec	283,314	9,880

Electricity Sales in MWH Continue...

Year	Month	Domestic Sales	Export Sales
2020	Jan	293,012	9,741
	Feb	263,685	9,854
	Mar	345,424	9,445
	Apr	261,738	9,029
	May	268,139	8,600
	Jun	279,446	9,359
	Jul	289,489	9,704
	Aug	295,368	9,809
	Sep	287,338	9,895
	Oct	341,363	10,497
	Nov	309,634	10,674
	Dec	302,906	10,544
2021	Jan	299,283	9,608
	Feb	271,421	8,931
	Mar	290,056	9,164
	Apr	284,527	9,089
	May	297,400	8,915
	Jun	284,881	9,015
	Jul	297,535	8,978
	Aug	296,030	8,979
	Sep	293,074	9,668
	Oct	301,575	9,917
	Nov	299,292	10,346

Table 4: Electricity sales index

Year	Month	Domestic sales Index	Export Index	Electricity Sales Composite Index
2018	Jan	115.2	130.5	115.6
	Feb	103.7	122.3	104.2
	Mar	110.5	113.3	110.6
	Apr	112.4	120.7	112.6
	May	106.6	110.6	106.7
	Jun	107.6	112.5	107.7
	Jul	117.8	122.8	118.0
	Aug	107.1	115.7	107.4
	Sep	107.2	123.8	107.7
	Oct	109.8	123.9	110.2
	Nov	109.8	128.1	110.3
	Dec	105.0	134.3	105.9
2019	Jan	112.8	145.8	113.8
	Feb	102.1	132.9	103.0
	Mar	114.0	130.1	114.4
	Apr	104.3	127.8	105.0
	May	111.2	125.7	111.6
	Jun	104.6	119.3	105.0
	Jul	110.9	120.0	111.2
	Aug	100.9	123.1	101.5
	Sep	104.0	127.0	104.6
	Oct	107.4	133.6	108.2
	Nov	110.3	133.8	111.0
	Dec	105.3	127.0	105.9

Electricity sales index Continue...

Year	Month	Domestic sales Index	Export Index	Electricity Sales Composite Index
2020	Jan	108.9	125.2	109.3
	Feb	98.0	126.7	98.8
	Mar	128.4	121.4	128.2
	Apr	97.3	116.1	97.8
	May	99.6	110.5	99.9
	Jun	103.8	120.3	104.3
	Jul	107.6	124.7	108.1
	Aug	109.8	126.1	110.2
	Sep	106.8	127.2	107.4
	Oct	126.9	134.9	127.1
	Nov	115.1	137.2	115.7
	Dec	112.6	135.5	113.2
2021	Jan	111.2	123.5	111.6
	Feb	100.9	114.8	101.3
	Mar	107.8	117.8	108.1
	Apr	105.7	116.8	106.0
	May	110.5	114.6	110.6
	Jun	105.9	115.9	106.1
	Jul	110.6	115.4	110.7
	Aug	110.0	115.4	110.2
	Sep	108.9	124.3	109.3
	Oct	112.1	127.5	112.5
	Nov	111.2	133.0	111.8

Methodology : Graphical and tabular analysis

Data Sources : The data sources for volume of electricity is sourced from Nam-power. These are data on domestic and export sale, Own Generation and import sources. The Production is in kilowatts per hour (kWh) for all the variables.

Index calculation: The index of sales and sources weighted uses the volume data of 2015.

Conversion : 1 basis point = 0.01 percent