



Chart 1: Electricity Total Sales Index (2010 = 100)

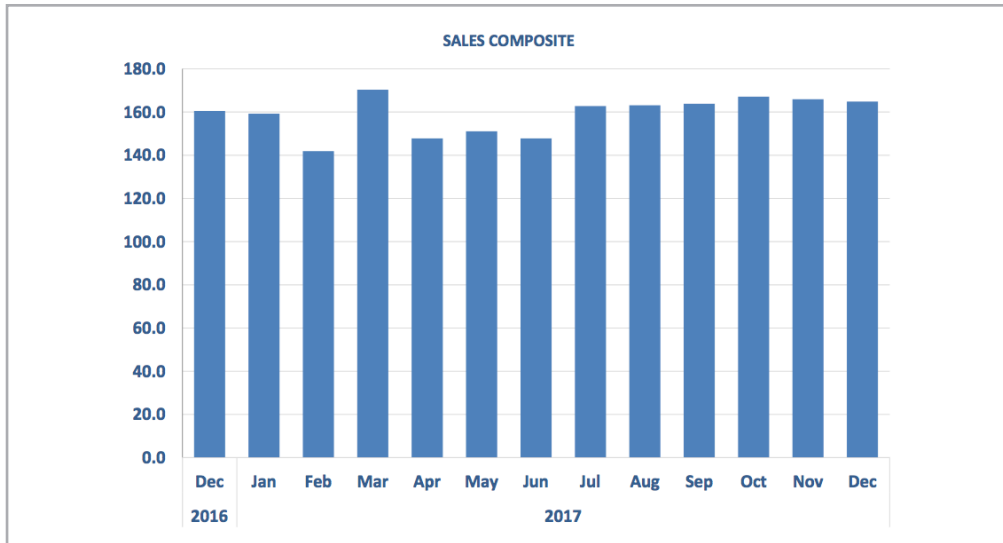
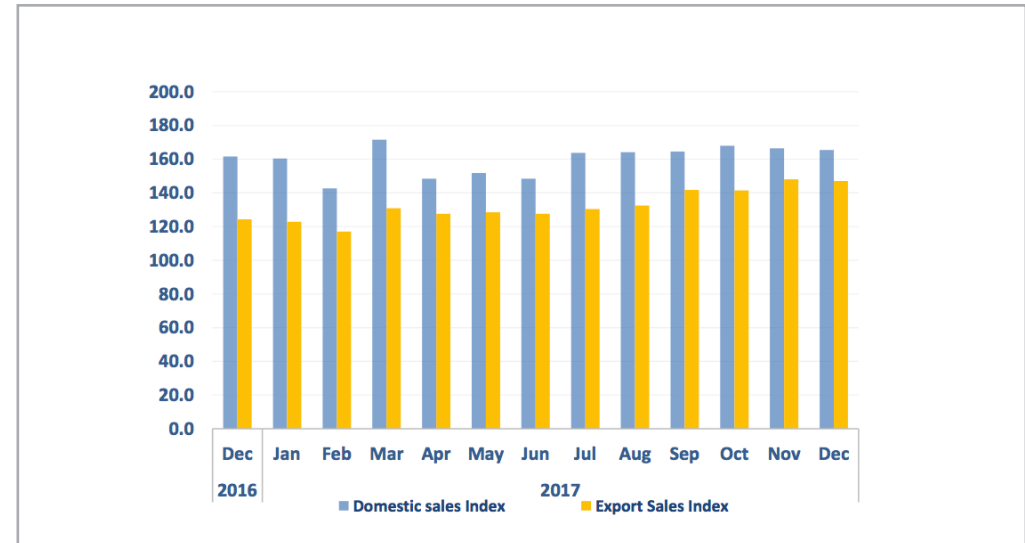


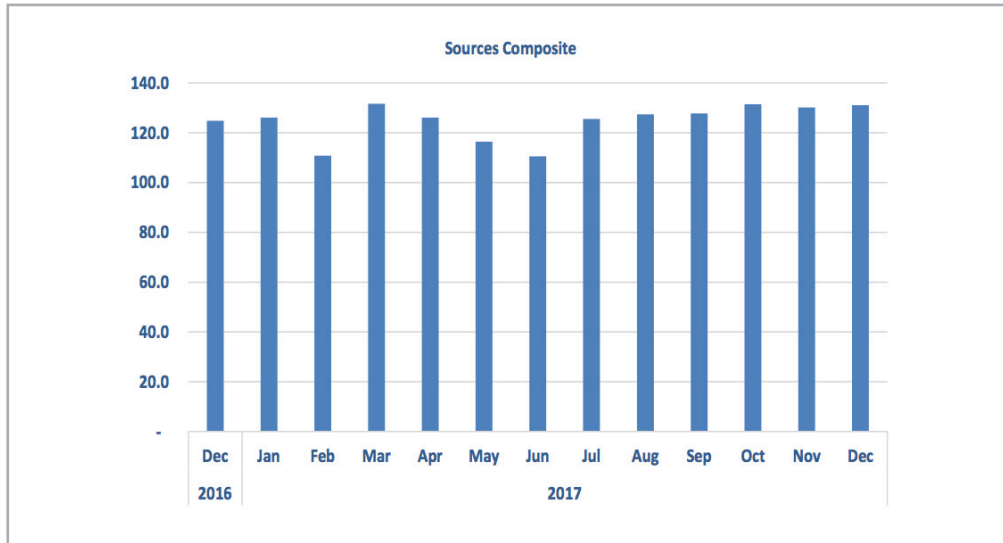
Chart 2: Electricity Sales Subsectors Index (2010 = 100)



- The **Electricity Sales Composite Index (ESCI)** that consists of domestic and export sales stood at 164.9 basis points in December 2017 compared to 165.9 basis points recorded during the previous month. This represents a decrease of 0.6 percent m/m and an increase of 2.7 percent y/y.
- The **domestic sales sub-index** recorded 165.4 basis points in December 2017 compared to 166.4 basis points recorded in November 2017 (See Chart 2). This shows a decrease of 0.6 percent m/m and an increase of 2.3 percent y/y.
- The **export sales sub-index** recorded 147.0 basis points in December 2017 compared to 148.0 basis points registered in November 2017. This represents a decrease of 0.7 percent m/m and an increase of 18.3 percent y/y.
- A total of 358 817 MWh of electricity was distributed in the domestic economy during December 2017 whilst only 9 728 MWh was exported during the same period.



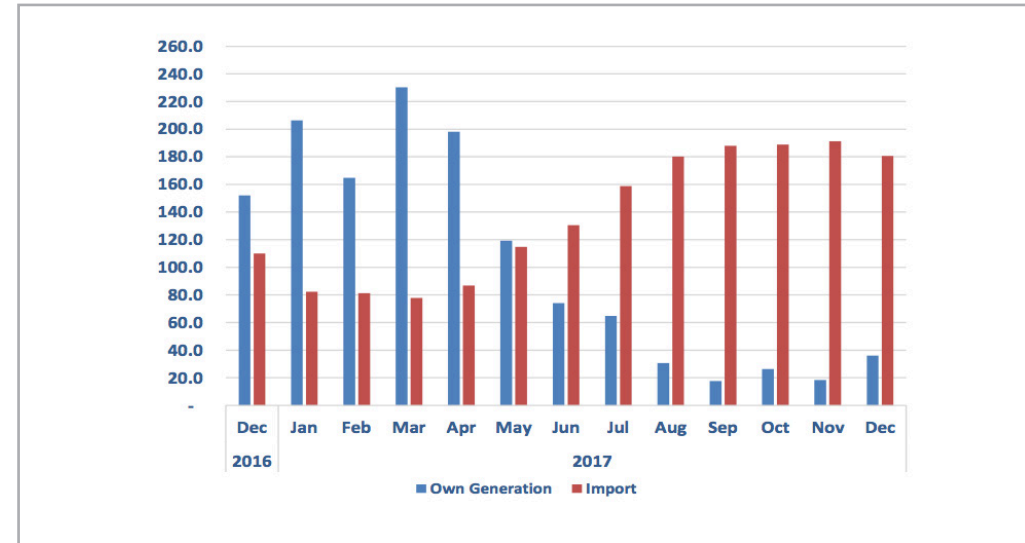
Chart 3: Electricity Total Sources Index (2010 = 100)



The **Electricity Sources Composite Index (ESCI)** that consists of own generated and import sources decreased, recording 129.6 basis points in December 2017 compared to 130.1 basis points recorded in the previous month. This represents a decrease of 0.4 percent m/m and an increase of 3.8 percent y/y.

- The own generated source sub-index recorded 36.0 basis points in December 2017 compared to 18.3 basis points recorded in November 2017 (See Chart 4). This translates to an increase of 96.3 percent m/m and a decline of 76.3 percent y/y.

Chart 4: Electricity Sources Subsectors Index (2010 = 100)



- The import sources sub-index recorded 180.7 basis points in December 2017 compared to 191.2 basis points recorded in November 2017. This represents a decrease of 5.5 percent m/m and an increase of 64.2 percent y/y.
- A total of 40 532 MWh of electricity was generated in Namibia during December 2017 whilst 372 611 MWh was imported during the same period.



Monthly Electricity Report

Issue 044
05 March 2018

Table 1: Electricity sales subsector in MWh

Year	Month	Domestic sales	Exports
2010	Jan	209,050	6,266
	Feb	199,448	5,930
	Mar	223,412	6,093
	Apr	210,872	6,786
	May	212,520	6,577
	Jun	216,385	6,458
	Jul	223,373	6,668
	Aug	222,042	6,530
	Sep	215,880	6,597
	Oct	224,282	7,300
	Nov	220,976	7,168
	Dec	225,009	7,019
2011	Jan	220,754	6,723
	Feb	209,276	6,094
	Mar	224,987	5,518
	Apr	211,291	4,485
	May	224,720	4,853
	Jun	227,816	6,768
	Jul	241,925	7,382
	Aug	237,336	7,186
	Sep	233,669	6,854
	Oct	240,742	8,653
	Nov	233,689	7,338
	Dec	229,641	7,556
2012	Jan	238,320	7,885
	Feb	226,787	7,269
	Mar	242,209	7,829
	Apr	229,105	7,473
	May	239,032	7,832
	Jun	245,163	7,339
	Jul	255,169	7,282
	Aug	248,953	7,551
	Sep	242,637	7,340
	Oct	255,556	7,651
	Nov	255,349	7,364
	Dec	241,860	5,348
2013	Jan	252,370	7,819
	Feb	240,016	7,847
	Mar	254,075	7,680
	Apr	247,225	7,444
	May	246,908	6,311
	Jun	245,297	6,908
	July	257,875	6,416
	Aug	252,068	7,083
	Sept	249,489	7,117
	Oct	260,609	7,222
	Nov	261,928	6,673
	Dec	237,401	7,027
2014	Jan	241 755	7 267
	Feb	243 913	6 988
	Mar	2 57 198	6 988
	Apr	254 657	3 528
	May	2 54 651	3 126
	Jun	256 963	3 339
	Jul	2 65 930	3 151
	Aug	257 104	3 391
	Sep	259 670	3 534
	Oct	2 72 475	3 513
	Nov	272 649	3 337
	Dec	2 54 873	7 559
2015	Jan	273 548	8 051
	Feb	2 44 280	7 329
	Mar	275 447	8 051
	Apr	2 58 836	7 086
	May	2 66 261	6 476
	Jun	272 395	6 853
	Jul	2 78 331	6 930
	Aug	2 75 082	7 515
	Sep	266 705	8 261
	Oct	3 08 507	9 122
	Nov	3 17 226	8 812
	Dec	3 86 755	8 876
2016	Jan	235 943	8 614
	Feb	3 29 678	8 465
	Mar	340 141	8 209
	Apr	332 054	8 190
	May	360 693	7 646
	Jun	3 19 637	8 142
	Jul	3 28 472	8 405
	Aug	3 40 658	7 709
	Sep	3 38 117	8 087
	Oct	355 265	8 555
	Nov	350 664	8 844
	Dec	3 50 587	8 221
2017	Jan	347 882	8 127
	Feb	3 09 404	7 741
	Mar	372 168	8 660
	Apr	321 999	8 440
	May	329 224	8 502
	Jun	3 21 999	8 440
	Jul	355 164	8 629
	Aug	3 55 952	8 766
	Sep	356 907	9 379
	Oct	364 259	9 356
	Nov	3 61 064	9 794
	Dec	3 58 817	9 728



Monthly Electricity Report

Issue 044
05 March 2018

Table 2: Total subsector electricity index (2010=100)

Year	Month	Domestic sales Index	Exports Index	Total Sales Index
2010	Jan	96.4	94.7	96.3
	Feb	91.9	89.6	91.9
	Mar	103.0	92.1	102.7
	Apr	97.2	102.6	97.4
	May	98.0	99.4	98.0
	Jun	99.7	97.6	99.7
	Jul	103.0	100.8	102.9
	Aug	102.4	98.7	102.2
	Sep	99.5	99.7	99.5
	Oct	103.4	110.3	103.6
	Nov	101.9	108.3	102.1
	Dec	103.7	106.1	103.8
2011	Jan	101.8	101.6	101.8
	Feb	96.5	92.1	96.3
	Mar	103.7	83.4	103.1
	Apr	97.4	67.8	96.5
	May	103.6	73.4	102.7
	Jun	105.0	102.3	104.9
	Jul	111.5	111.6	111.5
	Aug	109.4	108.6	109.4
	Sep	107.7	103.6	107.6
	Oct	111.0	130.8	111.6
	Nov	107.7	110.9	107.8
	Dec	105.9	114.2	106.1
2012	Jan	109.9	119.2	110.1
	Feb	104.5	109.9	104.7
	Mar	111.6	118.3	111.8
	Apr	105.6	113.0	105.8
	May	110.2	118.4	110.4
	Jun	113.0	110.9	112.9
	Jul	117.6	110.1	117.4
	Aug	114.8	114.1	114.7
	Sep	111.8	110.9	111.8
	Oct	117.8	115.6	117.7
	Nov	117.7	111.3	117.5
	Dec	111.5	80.8	110.6
2013	Jan	116.3	118.2	116.4
	Feb	110.6	118.6	110.9
	Mar	117.1	116.1	117.1
	Apr	114.0	112.5	113.9
	May	113.8	95.4	113.3
	Jun	113.1	104.4	112.8
	July	118.9	97.0	118.2
	Aug	116.2	107.1	115.9
	Sept	115.0	107.6	114.8
	Oct	120.1	109.2	119.8
	Nov	120.7	100.9	120.2
	Dec	109.4	106.2	109.3

Year	Month	Domestic sales Index	Exports Index	Total Sales Index
2014	Jan	111.4	109.8	111.4
	Feb	112.4	105.6	112.2
	Mar	118.6	105.6	118.2
	Apr	117.4	53.3	115.5
	May	117.4	47.2	115.3
	Jun	118.5	50.5	116.4
	Jul	122.6	47.6	120.4
	Aug	118.5	51.3	116.5
	Sep	119.7	53.4	117.7
	Oct	125.6	53.1	123.5
	Nov	125.7	50.4	123.5
	Dec	117.5	114.3	117.4
2015	Jan	126.1	121.7	126.0
	Feb	112.6	110.8	112.5
	Mar	127.0	121.7	126.8
	Apr	119.3	107.1	119.0
	May	122.7	97.9	122.0
	June	125.6	103.6	124.9
	Jul	128.3	104.7	127.6
	Aug	126.8	113.6	126.4
	Sep	122.9	124.9	123.0
	Oct	142.2	137.9	142.1
	Nov	146.2	133.2	145.8
	Dec	178.3	134.2	177.0
2016	Jan	108.8	130.2	109.4
	Feb	152.0	128.0	151.3
	Mar	156.8	124.1	155.8
	Apr	153.1	123.8	152.2
	May	166.3	115.6	164.8
	Jun	147.3	123.1	146.6
	Jul	151.4	127.0	150.7
	Aug	157.0	116.5	155.8
	Sep	155.9	122.2	154.9
	Oct	163.8	129.3	162.7
	Nov	161.6	133.7	160.8
	Dec	161.6	124.3	160.5
2017	Jan	160.4	122.8	159.3
	Feb	142.6	117.0	141.9
	Mar	171.6	130.9	170.4
	Apr	148.4	127.6	147.8
	May	151.8	128.5	151.1
	June	148.4	127.6	147.8
	Jul	163.7	130.4	162.7
	Aug	164.1	132.5	163.1
	Sep	164.5	141.8	163.8
	Oct	167.9	141.4	167.1
	Nov	166.4	148.0	165.9
	Dec	165.4	147.0	164.9



Monthly Electricity Report

Issue 044
05 March 2018

Table 3: Electricity sources subsector in MWh

Year	Month	Own generated	Import
2010	Jan	140 644	170 135
	Feb	1 42 680	150 060
	Mar	1 78 638	151 972
	Apr	173 468	139 471
	May	178 156	139 442
	Jun	1 48 632	174 819
	Jul	97 670	225 031
	Aug	7 2 090	249 267
	Sep	4 0 591	274 406
	Oct	2 7 817	299 253
	Nov	20 446	300 328
	Dec	1 30 795	200 847
2011	Jan	179 164	151 325
	Feb	1 62 476	142 391
	Mar	1 78 048	164 230
	Apr	172 703	142 254
	May	1 76 917	150 988
	Jun	1 69 554	164 192
	Jul	124 571	223 981
	Aug	118 103	224 347
	Sep	77 751	254 100
	Oct	42 346	307 624
	Nov	53 511	282 511
	Dec	1 51 806	180 962
2012	Jan	157 208	164 502
	Feb	166 661	1 59 444
	Mar	229 125	1 40 437
	Apr	2 35 433	1 20 761
	May	1 55 836	1 89 724
	Jun	9 8 948	2 53 287
	Jul	7 4 187	2 86 481
	Aug	7 1 051	2 86 376
	Sep	67 074	279 955
	Oct	6 5 758	294 002
	Nov	55 820	278 314
	Dec	142 163	198 319
2013	Jan	1 67 462	1 95 583
	Feb	125 756	204 038
	Mar	167 472	2 06 633
	Apr	2 11 960	1 44 284
	May	1 04 421	2 46 184
	Jun	76 007	2 74 746
	July	72 474	2 84 626
	Aug	64 967	2 93 024
	Sept	63 001	288 570
	Oct	53 014	314 523
	Nov	5 5 559	2 93 075
	Dec	176 914	1 70 331

Year	Month	Own generated	Import
2014	Jan	145 842	198 645
	Feb	1 15 363	1 98 001
	Mar	1 84 214	1 41 568
	Apr	237 021	105 445
	May	210 882	196 032
	Jun	118 989	242 204
	Jul	99 737	2 63 470
	Aug	92 585	266 068
	Sep	7 6 471	2 75 901
	Oct	6 7 229	3 01 895
	Nov	5 7 226	2 96 399
	Dec	2 09 267	216 303
2015	Jan	1 66 465	1 84 477
	Feb	149 796	178 355
	Mar	1 75 681	1 99 340
	Apr	2 12 911	1 69 782
	May	1 25 127	2 40 258
	June	87 582	269 882
	Jul	72 589	295 327
	Aug	71 478	297 025
	Sep	6 4 753	1 22 673
	Oct	5 2 155	3 02 342
	Nov	64 708	2 95 293
	Dec	82 584	3 04 172
2016	Jan	1 89 959	235 943
	Feb	1 79 873	194 909
	Mar	190 795	3 48 351
	Apr	1 82 267	197 959
	May	16 273	199 437
	Jun	108 304	256 083
	Jul	97 040	2 75 631
	Aug	97 386	278 153
	Sep	66 601	312 590
	Oct	66 875	316 925
	Nov	83 487	311 182
	Dec	1 71 237	226 916
2017	Jan	2 32 502	1 69 601
	Feb	1 85 610	1 67 716
	Mar	2 59 472	160 430
	Apr	223 170	178 971
	May	134 392	2 36 814
	June	83 410	269 000
	Jul	72 916	327 542
	Aug	3 4 542	3 71 617
	Sep	1 9 885	387 666
	Oct	2 9 702	3 89 450
	Nov	2 0 651	394 322
	Dec	20 651	3 94 322



Monthly Electricity Report

Issue 044
05 March 2018

Table 4: Total subsector electricity index (2010=100)

Year	Month	Own generated Index	Import Index	Total Electricity in Namibia Index
2010	Jan	124.9	8 2.5	97.5
	Feb	126.7	7 2.8	91.8
	Mar	-	7 3.7	47.7
	Apr	154.0	67.6	98.1
	May	158.2	6 7.6	99.6
	Jun	132.0	8 4.8	101.4
	Jul	8 6.7	109.1	101.2
	Aug	6 4.0	120.9	100.8
	Sep	36.0	133.0	98.8
	Oct	2 4.7	145.1	102.6
	Nov	18.2	145.6	100.6
	Dec	116.1	9 7.4	104.0
2011	Jan	159.1	7 3.4	1 03.6
	Feb	144.2	6 9.0	95.6
	Mar	158.1	79.6	107.3
	Apr	153.3	6 9.0	98.8
	May	157.1	7 3.2	1 02.8
	Jun	150.5	7 9.6	1 04.7
	Jul	110.6	108.6	1 09.3
	Aug	104.9	108.8	1 07.4
	Sep	6 9.0	123.2	1 04.1
	Oct	3 7.6	149.1	109.7
	Nov	4 7.5	137.0	105.4
	Dec	134.8	87.7	104.4
2012	Jan	139.6	7 9.8	1 00.9
	Feb	148.0	7 7.3	1 02.3
	Mar	203.4	6 8.1	1 15.9
	Apr	209.0	5 8.5	1 11.7
	May	138.4	92.0	108.4
	Jun	87.8	122.8	110.5
	Jul	6 5.9	138.9	113.1
	Aug	6 3.1	138.8	112.1
	Sep	5 9.5	135.7	1 08.8
	Oct	58.4	142.5	1 12.8
	Nov	49.6	134.9	104.8
	Dec	126.2	96.2	1 06.8
2013	Jan	148.7	94.8	113.8
	Feb	111.6	9 8.9	103.4
	Mar	148.7	100.2	1 17.3
	Apr	188.2	70.0	1 11.7
	May	9 2.7	119.4	1 09.9
	Jun	67.5	133.2	1 10.0
	July	64.3	138.0	1 12.0
	Aug	5 7.7	142.1	1 12.3
	Sept	55.9	139.9	110.2
	Oct	4 7.1	152.5	115.3
	Nov	4 9.3	142.1	1 09.3
	Dec	157.1	8 2.6	1 08.9

Year	Month	Own generated Index	Import Index	Total Electricity in Namibia Index
2014	Jan	129.5	96.3	108.0
	Feb	102.4	96.0	98.3
	Mar	163.5	68.6	102.2
	Apr	210.4	51.1	107.4
	May	187.2	95.0	127.6
	Jun	105.6	117.4	113.3
	Jul	88.5	127.7	113.9
	Aug	82.2	129.0	112.5
	Sep	67.9	133.8	110.5
	Oct	59.7	146.4	115.8
	Nov	50.8	143.7	110.9
	Dec	185.8	104.9	133.5
2015	Jan	147.8	89.4	110.1
	Feb	133.0	86.5	102.9
	Mar	156.0	96.6	117.6
	Apr	189.0	82.3	120.0
	May	111.1	116.5	114.6
	June	77.8	130.9	112.1
	Jul	64.4	143.2	115.4
	Aug	63.5	144.0	115.6
	Sep	57.5	59.5	58.8
	Oct	46.3	146.6	111.2
	Nov	57.4	143.2	112.9
	Dec	73.3	147.5	121.3
2016	Jan	168.6	114.4	133.6
	Feb	159.7	94.5	117.5
	Mar	169.4	168.9	169.1
	Apr	161.8	96.0	119.2
	May	14.4	96.7	67.6
	Jun	96.2	124.2	114.3
	Jul	86.2	133.6	116.9
	Aug	86.5	134.9	117.8
	Sep	59.1	151.6	118.9
	Oct	59.4	153.7	120.4
	Nov	74.1	150.9	123.8
	Dec	152.0	110.0	124.9
2017	Jan	206.4	82.2	126.1
	Feb	164.8	81.3	110.8
	Mar	230.4	77.8	131.7
	Apr	198.1	86.8	126.1
	May	119.3	114.8	116.4
	June	74.1	130.4	110.5
	Jul	64.7	158.8	125.6
	Aug	30.7	180.2	127.4
	Sep	17.7	188.0	127.8
	Oct	26.4	188.8	131.4
	Nov	18.3	191.2	130.1
	Dec	36.0	180.7	129.6



Methodology

- Background:** Domestic electricity sales, exports data and sources is weighted to calculate the overall index.
- Data sources:** NamPower
- Base year:** 2010