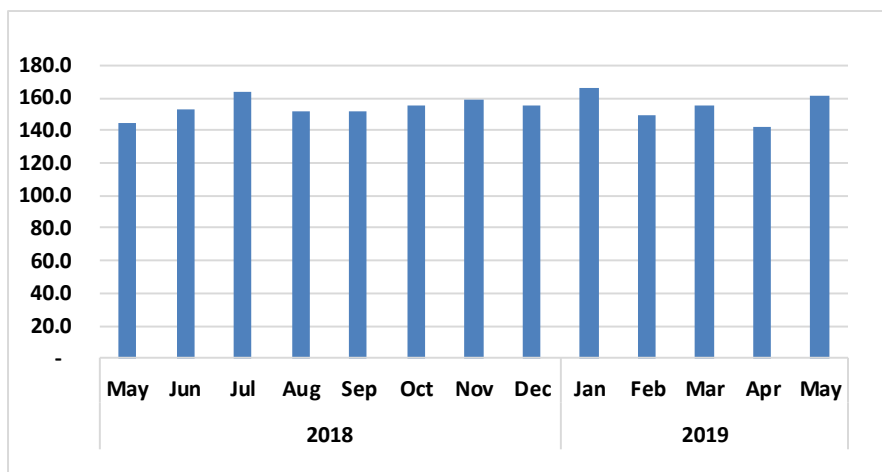


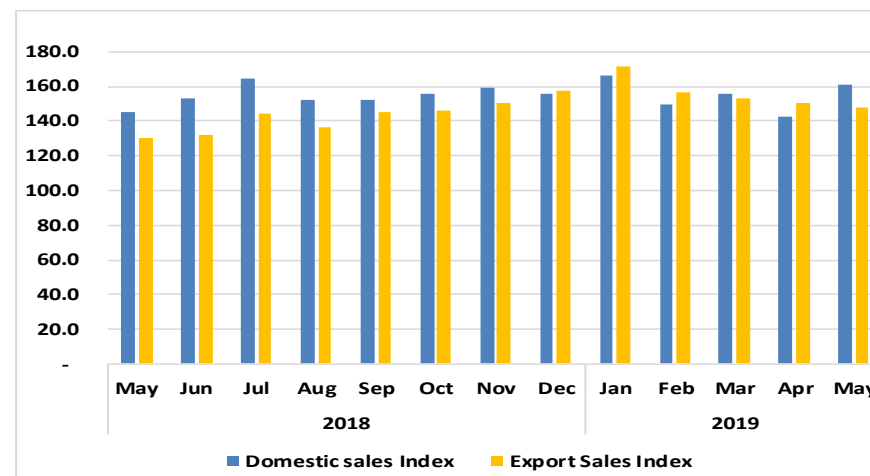


Chart 1: Electricity Total Sales Index (2010 = 100)



- The **Electricity Sales Composite Index (ESeCI)** that consists of domestic and export sales for May 2019 stood at 161.1 basis points compared to 142.5 basis points recorded in April 2019. These represent increases of 13.0 percent m/m and 11.1 percent y/y.
- The **domestic sales sub-index** recorded 161.5 basis points in May 2019 compared to 142.3 basis points recorded in April 2019 (Chart 2). These show increases of 13.5 percent m/m and 11.1 percent y/y.

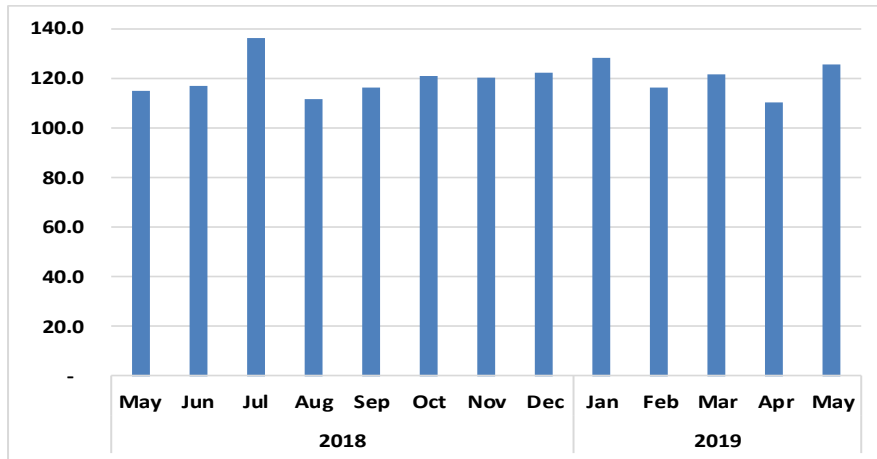
Chart 2: Electricity Sales Subsectors Index (2010 = 100)



- The **export sales sub-index** recorded 147.8 basis points in May 2019 compared to 150.3 basis points recorded in April 2019. This represents a decline of 1.6 percent m/m and an increase of 13.7 percent y/y.
- A **total** of 350 293 MWh of electricity was sold in the domestic economy during May 2019, whereas only 9 779 MWh was exported during the same period.



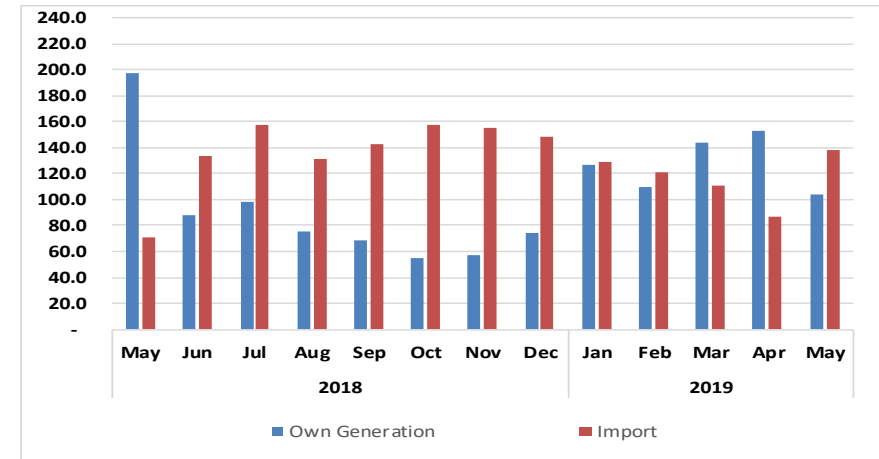
Chart 3: Electricity Total Sources Index (2010 = 100)



- The **Electricity Sources Composite Index (ESoCI)** that consists of own generated and import of electricity stood at 126.0 basis points in May 2019 compared to 110.2 basis points recorded for the previous month. These represent increases of 14.3 percent m/m and 9.2 percent y/y.
- The **own generation** sub-index recorded 104.5 basis points in May 2019 compared to 153.3 basis points recorded for April 2019 (Chart 4). These represent declines of 31.8 percent m/m and 47.1 percent y/y.

The decline y/y is attributed to the slowdown in the generation of electricity that was mainly obtained from the Ruacana and Ombepo Energy Wind IPP Power Stations.

Chart 4: Electricity Sources Subsectors Index (2010 = 100)



- The **import sub-index** elevated, recording 137.8 basis points in May 2019 compared to 86.7 basis points recorded in April 2019. These show increases of 58.9 percent m/m and 95.4 percent y/y.
- The increase over the year in electricity imports was mainly due to the increase of the electricity imported from Eskom Aggeneis and Scorpion Power Stations.
- A **total** of 117 685 MWh of electricity was produced in Namibia during May 2019 while 284 256 MWh were imported during the same period.



Monthly Electricity Report

Table 1: Electricity sales subsector in MWh

Year	Month	Domestic Sales	Export
2010	Jan	209 050	6 266
	Feb	199 448	5 930
	Mar	223 412	6 093
	Apr	210 872	6 786
	May	212 520	6 577
	Jun	216 385	6 458
	Jul	223 373	6 668
	Aug	222 042	6 530
	Sep	215 880	6 597
	Oct	224 282	7 300
	Nov	220 976	7 168
	Dec	225 009	7 019
2011	Jan	220 754	6 723
	Feb	209 276	6 094
	Mar	224 987	5 518
	Apr	211 291	4 485
	May	224 720	4 853
	Jun	227 816	6 768
	Jul	241 925	7 382
	Aug	237 336	7 186
	Sep	233 669	6 854
	Oct	240 742	8 653
	Nov	233 689	7 338
	Dec	229 641	7 556
2012	Jan	238 320	7 885
	Feb	226 787	7 269
	Mar	242 209	7 829
	Apr	229 105	7 473
	May	239 032	7 832
	Jun	245 163	7 339
	Jul	255 169	7 282
	Aug	248 953	7 551
	Sep	242 637	7 340
	Oct	255 556	7 651
	Nov	255 349	7 364
	Dec	241 860	5 348
2013	Jan	252 370	7 819
	Feb	240 016	7 847
	Mar	254 075	7 680
	Apr	247 225	7 444
	May	246 908	6 311
	Jun	245 297	6 908
	Jul	257 875	6 416
	Aug	252 068	7 083
	Sept	249 489	7 117
	Oct	260 609	7 222
	Nov	261 928	6 673
	Dec	237 401	7 027

Table 1: Continue...

Year	Month	Domestic Sales	Export
2015	Jan	273,548	8,051
	Feb	244,280	7,329
	Mar	275,447	8,051
	Apr	258,836	7,086
	May	266,261	6,476
	Jun	272,395	6,853
	Jul	278,331	6,930
	Aug	275,082	7,515
	Sep	266,705	8,261
	Oct	308,507	9,122
	Nov	317,226	8,812
	Dec	386,755	8,876
2016	Jan	235,943	8,614
	Feb	329,678	8,465
	Mar	340,141	8,209
	Apr	332,054	8,190
	May	360,693	7,646
	Jun	319,637	8,142
	Jul	328,472	8,405
	Aug	340,658	7,709
	Sep	338,117	8,087
	Oct	355,265	8,555
	Nov	350,664	8,844
	Dec	350,587	8,221
2017	Jan	347,882	8,127
	Feb	309,404	7,741
	Mar	372,168	8,660
	Apr	321,999	8,440
	May	329,224	8,502
	Jun	321,999	8,440
	Jul	355,164	8,629
	Aug	355,952	8,766
	Sep	356,907	9,379
	Oct	364,259	9,356
	Nov	361,064	9,794
	Dec	358,817	9,728
2018	Jan	364,558	10,153
	Feb	329,357	9,518
	Mar	345,885	8,811
	Apr	330,372	9,387
	May	315,369	8,603
	Jun	333,169	8,749
	Jul	357,273	9,557
	Aug	330,124	9,000
	Sep	329,439	9,634
	Oct	338,198	9,643
	Nov	345,135	9,969
	Dec	337,683	10,445
2019	Jan	360,391	11,340
	Feb	324,235	10,343
	Mar	338,207	10,125
	Apr	308,713	9,942
	May	350,293	9,779



Table 2: Total subsector electricity index (2010=100)

Year	Month	Domestic sales Index	Export Index	Total Sales Index
2010	Jan	96.4	94.7	96.3
	Feb	91.9	89.6	91.9
	Mar	103.0	92.1	102.7
	Apr	97.2	102.6	97.4
	May	98.0	99.4	98.0
	Jun	99.7	97.6	99.7
	Jul	103.0	100.8	102.9
	Aug	102.4	98.7	102.2
	Sep	99.5	99.7	99.5
	Oct	103.4	110.3	103.6
	Nov	101.9	108.3	102.1
	Dec	103.7	106.1	103.8
2011	Jan	101.8	101.6	101.8
	Feb	96.5	92.1	96.3
	Mar	103.7	83.4	103.1
	Apr	97.4	67.8	96.5
	May	103.6	73.4	102.7
	Jun	105.0	102.3	104.9
	Jul	111.5	111.6	111.5
	Aug	109.4	108.6	109.4
	Sep	107.7	103.6	107.6
	Oct	111.0	130.8	111.6
	Nov	107.7	110.9	107.8
	Dec	105.9	114.2	106.1
2012	Jan	109.9	119.2	110.1
	Feb	104.5	109.9	104.7
	Mar	111.6	118.3	111.8
	Apr	105.6	113.0	105.8
	May	110.2	118.4	110.4
	Jun	113.0	110.9	112.9
	Jul	117.6	110.1	117.4
	Aug	114.8	114.1	114.7
	Sep	111.8	110.9	111.8
	Oct	117.8	115.6	117.7
	Nov	117.7	111.3	117.5
	Dec	111.5	80.8	110.6
2013	Jan	116.3	118.2	116.4
	Feb	110.6	118.6	110.9
	Mar	117.1	116.1	117.1
	Apr	114.0	112.5	113.9
	May	113.8	95.4	113.3
	Jun	113.1	104.4	112.8
	Jul	118.9	97.0	118.2
	Aug	116.2	107.1	115.9
	Sept	115.0	107.6	114.8
	Oct	120.1	109.2	119.8
	Nov	120.7	100.9	120.2
	Dec	109.4	106.2	109.3

Table 2: Continue...

Year	Month	Domestic sales	Export Index	Total Sales
2015	Jan	126.1	121.7	126.0
	Feb	112.6	110.8	112.5
	Mar	127.0	121.7	126.8
	Apr	119.3	107.1	119.0
	May	122.7	97.9	122.0
	June	125.6	103.6	124.9
	Jul	128.3	104.7	127.6
	Aug	126.8	113.6	126.4
	Sep	122.9	124.9	123.0
	Oct	142.2	137.9	142.1
	Nov	146.2	133.2	145.8
	Dec	178.3	134.2	177.0
2016	Jan	108.8	130.2	109.4
	Feb	152.0	128.0	151.3
	Mar	156.8	124.1	155.8
	Apr	153.1	123.8	152.2
	May	166.3	115.6	164.8
	Jun	147.3	123.1	146.6
	Jul	151.4	127.0	150.7
	Aug	157.0	116.5	155.8
	Sep	155.9	122.2	154.9
	Oct	163.8	129.3	162.7
	Nov	161.6	133.7	160.8
	Dec	161.6	124.3	160.5
2017	Jan	160.4	122.8	159.3
	Feb	142.6	117.0	141.9
	Mar	171.6	130.9	170.4
	Apr	148.4	127.6	147.8
	May	151.8	128.5	151.1
	Jun	148.4	127.6	147.8
	Jul	163.7	130.4	162.7
	Aug	164.1	132.5	163.1
	Sep	164.5	141.8	163.8
	Oct	167.9	141.4	167.1
	Nov	166.4	148.0	165.9
	Dec	165.4	147.0	164.9
2018	Jan	168.0	153.5	167.6
	Feb	151.8	143.9	151.6
	Mar	159.4	133.2	158.7
	Apr	152.3	141.9	152.0
	May	145.4	130.0	144.9
	Jun	153.6	132.2	152.9
	Jul	164.7	144.4	164.1
	Aug	152.2	136.0	151.7
	Sep	151.9	145.6	151.7
	Oct	155.9	145.8	155.6
	Nov	159.1	150.7	158.8
	Dec	155.7	157.9	155.7
2019	Jan	166.1	171.4	166.3
	Feb	149.5	156.3	149.7
	Mar	155.9	153.0	155.8
	Apr	142.3	150.3	142.5
	May	161.5	147.8	161.1



Table 3: Electricity sources subsector in MWh

Year	Month	Own generated	Import
2010	Jan	140 644	170 135
	Feb	142 680	150 060
	Mar	178 638	151 972
	Apr	173 468	139 471
	May	178 156	139 442
	Jun	148 632	174 819
	Jul	97 670	225 031
	Aug	72 090	249 267
	Sep	40 591	274 406
	Oct	27 817	299 253
	Nov	20 446	300 328
	Dec	130 795	200 847
2011	Jan	179 164	151 325
	Feb	162 476	142 391
	Mar	178 048	164 230
	Apr	172 703	142 254
	May	176 917	150 988
	Jun	169 554	164 192
	Jul	124 571	223 981
	Aug	118 103	224 347
	Sep	77 751	254 100
	Oct	42 346	307 624
	Nov	53 511	282 511
	Dec	151 806	180 962
2012	Jan	157 208	164 502
	Feb	166 661	159 444
	Mar	229 125	140 437
	Apr	235 433	120 761
	May	155 836	189 724
	Jun	98 948	253 287
	Jul	74 187	286 481
	Aug	71 051	286 376
	Sep	67 074	279 955
	Oct	65 758	294 002
	Nov	55 820	278 314
	Dec	142 163	198 319
2013	Jan	167 462	195 583
	Feb	125 756	204 038
	Mar	167 472	206 633
	Apr	211 960	144 284
	May	104 421	246 184
	Jun	76 007	274 746
	July	72 474	284 626
	Aug	64 967	293 024
	Sept	63 001	288 570
	Oct	53 014	314 523
	Nov	55 559	293 075
	Dec	176 914	170 331

Table 3: Continue...

Year	Month	Own generated	Import
2015	Jan	166,465	184,477
	Feb	149,796	178,355
	Mar	175,681	199,340
	Apr	212,911	169,782
	May	125,127	240,258
	Jun	87,582	269,882
	Jul	72,589	295,327
	Aug	71,478	297,025
	Sep	64,753	122,673
	Oct	52,155	302,342
	Nov	64,708	295,293
	Dec	82,584	304,172
2016	Jan	189,959	235,943
	Feb	179,873	194,909
	Mar	190,795	348,351
	Apr	182,267	197,959
	May	16,273	199,437
	Jun	108,304	256,083
	Jul	97,040	275,631
	Aug	97,386	278,153
	Sep	66,601	312,590
	Oct	66,875	316,925
	Nov	83,487	311,182
	Dec	171,237	226,916
2017	Jan	232,502	169,601
	Feb	185,610	167,716
	Mar	259,472	160,430
	Apr	223,170	178,971
	May	134,392	236,814
	Jun	83,410	269,000
	Jul	72,916	327,542
	Aug	34,542	371,617
	Sep	19,885	387,666
	Oct	29,702	389,450
	Nov	20,651	394,322
	Dec	40,532	372,611
2018	Jan	79,862	334,179
	Feb	197,034	207,219
	Mar	214,593	200,423
	Apr	260,294	127,802
	May	222,541	145,444
	Jun	99,652	274,653
	Jul	110,380	323,915
	Aug	85,206	271,109
	Sep	77,605	294,266
	Oct	61,374	324,465
	Nov	64,153	319,578
	Dec	83,455	307,166
2019	Jan	142,891	265,752
	Feb	123,392	248,783
	Mar	161,498	227,721
	Apr	172,656	178,848
	May	117,685	284,256



Table 4: Total subsector electricity index (2010=100)

Year	Month	Own generated Index	Import Index	Total Electricity in Namibia Index
2010	Jan	124.9	82.5	97.5
	Feb	126.7	72.8	91.8
	Mar	158.6	73.7	103.7
	Apr	154.0	67.6	98.1
	May	158.2	67.6	99.6
	Jun	132.0	84.8	101.4
	Jul	86.7	109.1	101.2
	Aug	64.0	120.9	100.8
	Sep	36.0	133.0	98.8
	Oct	24.7	145.1	102.6
	Nov	18.2	145.6	100.6
	Dec	116.1	97.4	104.0
2011	Jan	159.1	73.4	103.6
	Feb	144.2	69.0	95.6
	Mar	158.1	79.6	107.3
	Apr	153.3	69.0	98.8
	May	157.1	73.2	102.8
	Jun	150.5	79.6	104.7
	Jul	110.6	108.6	109.3
	Aug	104.9	108.8	107.4
	Sep	69.0	123.2	104.1
	Oct	37.6	149.1	109.7
	Nov	47.5	137.0	105.4
	Dec	134.8	87.7	104.4
2012	Jan	139.6	79.8	100.9
	Feb	148.0	77.3	102.3
	Mar	203.4	68.1	115.9
	Apr	209.0	58.5	111.7
	May	138.4	92.0	108.4
	Jun	87.8	122.8	110.5
	Jul	65.9	138.9	113.1
	Aug	63.1	138.8	112.1
	Sep	59.5	135.7	108.8
	Oct	58.4	142.5	112.8
	Nov	49.6	134.9	104.8
	Dec	126.2	96.2	106.8
2013	Jan	148.7	94.8	113.8
	Feb	111.6	98.9	103.4
	Mar	148.7	100.2	117.3
	Apr	188.2	70.0	111.7
	May	92.7	119.4	109.9
	Jun	67.5	133.2	110.0
	Jul	64.3	138.0	112.0
	Aug	57.7	142.1	112.3
	Sept	55.9	139.9	110.2
	Oct	47.1	152.5	115.3
	Nov	49.3	142.1	109.3
	Dec	157.1	82.6	108.9

Table 4: Continue...

Year	Month	Own generated	Import Index	Total Electricity in
2015	Jan	147.8	89.4	110.1
	Feb	133.0	86.5	102.9
	Mar	156.0	96.6	117.6
	Apr	189.0	82.3	120.0
	May	111.1	116.5	114.6
	June	77.8	130.9	112.1
	Jul	64.4	143.2	115.4
	Aug	63.5	144.0	115.6
	Sep	57.5	59.5	58.8
	Oct	46.3	146.6	111.2
	Nov	57.4	143.2	112.9
	Dec	73.3	147.5	121.3
2016	Jan	168.6	114.4	133.6
	Feb	159.7	94.5	117.5
	Mar	169.4	168.9	169.1
	Apr	161.8	96.0	119.2
	May	14.4	96.7	67.6
	Jun	96.2	124.2	114.3
	Jul	86.2	133.6	116.9
	Aug	86.5	134.9	117.8
	Sep	59.1	151.6	118.9
	Oct	59.4	153.7	120.4
	Nov	74.1	150.9	123.8
	Dec	152.0	110.0	124.9
2017	Jan	206.4	82.2	126.1
	Feb	164.8	81.3	110.8
	Mar	230.4	77.8	131.7
	Apr	198.1	86.8	126.1
	May	119.3	114.8	116.4
	Jun	74.1	130.4	110.5
	Jul	64.7	158.8	125.6
	Aug	30.7	180.2	127.4
	Sep	17.7	188.0	127.8
	Oct	26.4	188.8	131.4
	Nov	18.3	191.2	130.1
	Dec	36.0	180.7	129.6
2018	Jan	70.9	162.0	129.8
	Feb	174.9	100.5	126.8
	Mar	190.5	97.2	130.1
	Apr	231.1	62.0	121.7
	May	197.6	70.5	115.4
	Jun	88.5	133.2	117.4
	Jul	98.0	157.0	136.2
	Aug	75.6	131.4	111.7
	Sep	68.9	142.7	116.6
	Oct	54.5	157.3	121.0
	Nov	57.0	154.9	120.3
	Dec	74.1	148.9	122.5
2019	Jan	126.9	128.8	128.1
	Feb	109.5	120.6	116.7
	Mar	143.4	110.4	122.1
	Apr	153.3	86.7	110.2
	May	104.5	137.8	126.0



Methodology

Background : Domestic electricity Sales, exports data and Sources is weighted to calculate the overall index.

Data Sources: NamPower

Base year : 2010