

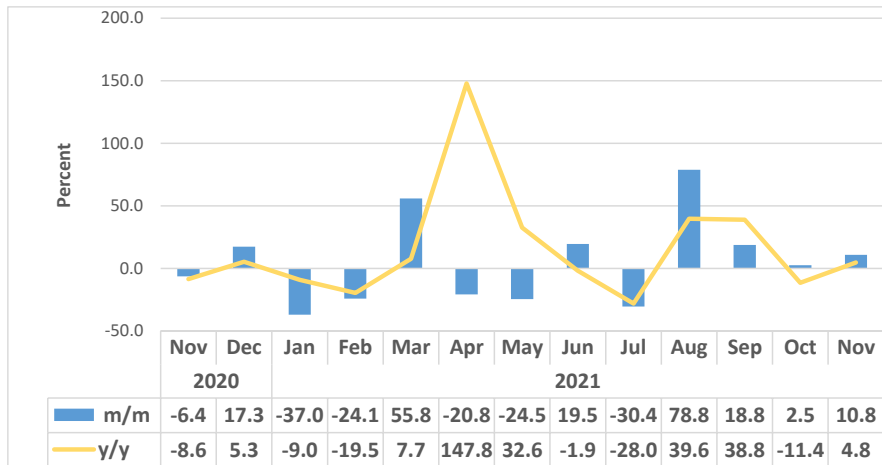


# Beverage Sectoral Report November 2021

---

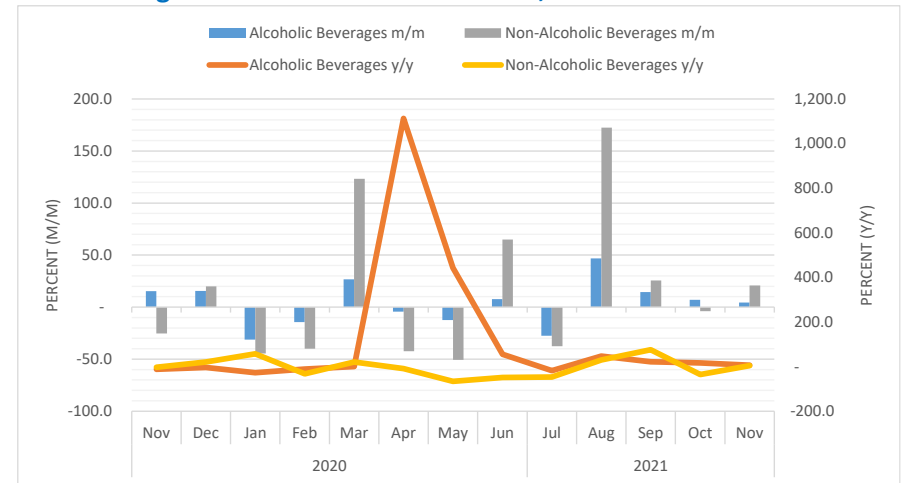
**Note: Some graphs has been limited for better readability (Chart 3 & 5)**

**Chart 1: Beverage Composite Production Index, Percent**



- The **Composite Production Index** for beverages consisting of alcoholic and non-alcoholic beverages increased by 10.8 percent month on month, compared to 2.5 percent recorded in October 2021. The index recorded an increase of 4.8 percent year on year.
- The total beverage production for November 2021 increased to 390 113 hectolitres, from 352 227 hectolitres produced in October 2021, while a total of 372 283 hectolitres was produced in the corresponding month of 2020.
- The **Alcoholic Beverage Production Index** registered a monthly increase of 4.4 percent in November 2021 compared to an increase of 6.9 percent recorded for the preceding month (Chart 2). While, an increase of 5.7 percent was recorded year on year.

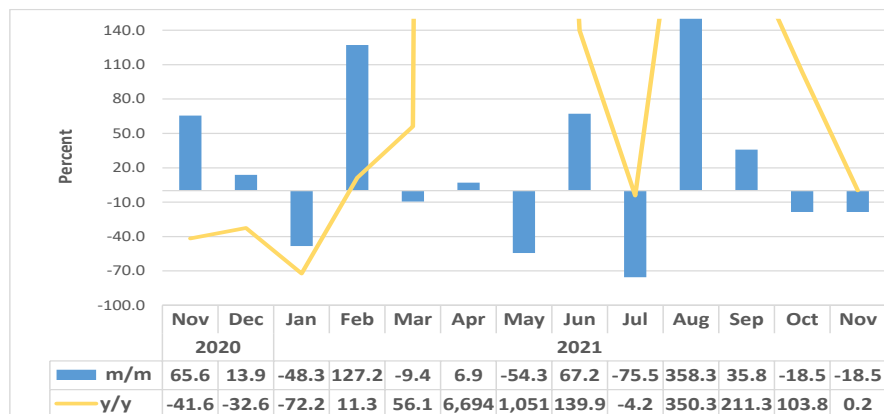
**Chart 2: Beverage Sub-Sector Production Index, Percent**



- The **Non-alcoholic Beverage Production Index** increased monthly by 20.9 percent in November 2021 from a decline of 3.9 percent registered in October 2021. On an annual basis, the index increased by 3.5 percent (Chart 2).
- A total of 226 143 hectolitres of alcoholic beverages was produced in November 2021 compared to 216 556 hectolitres produced in October 2021, while the total non-alcoholic beverages produced in November 2021 stood at 163 970 hectolitres compared to 135 671 hectolitres production recorded for October 2021.

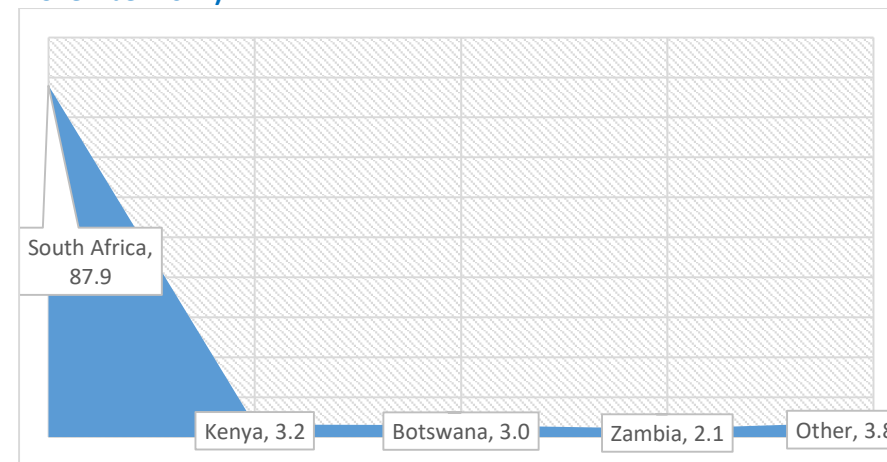
**Note:** Some graphs has been limited for better readability (Chart 3 & 5)

**Chart 3: Beverage Export Composite index, percent**



- The **Beverage Composite Export Index** for November 2021 declined at a monthly constant rate of 18.5 percent compared to October 2021. Over the year, the index registered a marginal growth of 0.2 percent.
- The decline on monthly basis is owed to both the export of non-alcoholic beverages and alcoholic beverage that registered declines of 28.6 percent and 18.3 percent, respectively.
- A total of 46 802 hectolitres of beverage was exported in the month of November 2021 compared to 57 459 hectolitres and 46 698 hectolitres registered in October 2021 and November 2020, respectively.
- For the month of November 2021, Namibia exported 45 786 hectolitres of Alcoholic beverage of which 41 947 hectolitres (91.6%) was Beer. Non-Alcoholic beverages monthly export stood at 1 016 hectolitres during the period under review.

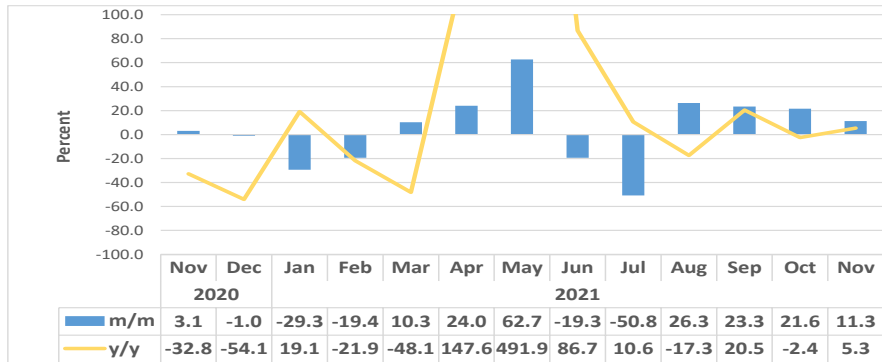
**Chart 4: Export of Beverages by Partner (Percentage Share for November 2021)**



- South Africa accounting for 87.9 percent of total export for beverages was the top export destination, followed by Kenya (3.2%), Botswana (3.0%) and Zambia with 2.1 percent share in the fourth place (Chart 4).

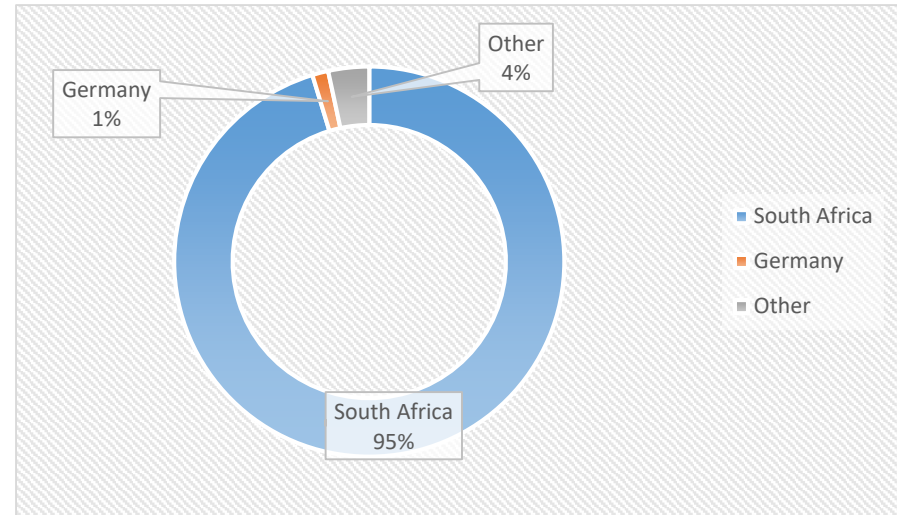
**Note:** Some graphs has been limited for better readability (Chart 3 & 5)

**Chart 5: Beverage Import Composite Index, Percent**



- The **Beverage Import Composite Index** for November 2021 increased by 11.3 percent on a monthly basis compared to a growth of 21.6 percent recorded a month earlier. On a yearly basis, the index registered an increase of 5.3 percent.
- The increase on a monthly basis is attributed to import of non-alcoholic beverages went up by 24.3 percent recording 76 378 hectolitres in November 2021 from 61 437 registered in the preceding month.
- Alcoholic beverage import index for November 2021 recorded a monthly decline of 2.5 percent from an increase of 12.4 percent recorded a month earlier. For the period under review, 56 611 hectolitres of alcoholic beverage was imported into the country.
- Total volume of beverages that were imported stood at 132 990 hectolitres during the review period compared to 119 527 hectolitres registered in October 2021 and 126 270 hectolitres a year earlier.

**Chart 6: Import of Beverages by Partner (Percentage Share for October 2021)**



- The Beverage that was imported for November 2021 was mainly sourced from South Africa accounting for 95.3 percent of the imports followed by Germany (1.3%) whereas other countries recorded a combined share of 3.4 percent (Chart 6).

**Note:** Some graphs has been limited for better readability (Chart 3 & 5)

Table 1: Beverages Sector Index

Year	Month	Alcoholic Beverages Production	Non-Alcoholic Beverages Production	Composite Production	Total non-alcoholic Beverage Export	Total non-alcoholic Beverage Import	Total alcoholic Beverage Export	Total alcoholic Beverage Import
2018	Jan	87.9	86.3	87.3	11.8	287.8	45.9	317.2
	Feb	98.6	145.5	115.1	8.5	236.0	40.4	328.4
	Mar	131.0	129.3	130.4	23.2	317.3	54.7	109.0
	Apr	102.7	88.5	97.7	38.9	220.1	56.4	264.2
	May	101.2	110.0	104.3	36.4	6629.7	47.4	831.3
	Jun	105.6	95.6	102.1	79.9	306.0	63.4	511.8
	Jul	103.0	133.1	113.6	53.7	185.1	49.1	245.3
	Aug	124.4	109.3	119.1	36.4	341.0	49.4	302.3
	Sep	123.7	123.4	123.6	111.2	312.9	67.6	285.2
	Oct	120.7	174.4	139.6	102.9	449.7	70.0	1127.6
	Nov	148.5	201.3	167.1	210.3	879.1	71.5	311.0
	Dec	141.5	166.2	150.2	113.2	405.1	77.8	344.7
2019	Jan	106.6	123.6	112.6	296.5	599.9	52.6	621.1
	Feb	107.2	127.4	114.3	137.1	776.4	64.6	59.8
	Mar	118.7	127.5	121.8	77.4	684.0	57.4	47.7
	Apr	124.8	156.8	136.1	239.8	457.6	61.3	43.6
	May	126.3	113.5	121.8	642.3	595.9	72.2	51.3
	Jun	121.1	77.1	105.6	59.0	637.7	96.0	97.6
	Jul	116.3	92.9	108.1	171.0	361.6	58.5	108.4
	Aug	117.8	134.8	123.8	59.5	877.1	66.9	359.2
	Sep	142.0	141.4	141.8	103.3	593.3	71.6	52.7
	Oct	137.0	192.8	156.6	226.0	526.7	81.5	58.5
	Nov	144.7	177.5	156.3	259.3	913.3	76.6	82.4
	Dec	152.2	171.9	159.2	269.4	754.9	75.0	212.4

Table 1: Beverages Sector Index continued...

Year	Month	Alcoholic Beverages Production	Non-Alcoholic Beverages Production	Composite Production	Total non-alcoholic Beverage Export	Total non-alcoholic Beverage Import	Total alcoholic Beverage Export	Total alcoholic Beverage Import
2020	Jan	139.5	72.6	116.0	124.0	294.3	102.5	43.4
	Feb	97.7	102.6	99.4	101.5	440.0	56.9	40.6
	Mar	109.6	127.1	115.8	77.7	309.6	36.3	136.0
	Apr	8.6	97.4	39.9	24.2	284.9	0.0	2.1
	May	16.9	128.7	56.2	28.3	188.4	1.5	2.3
	Jun	63.3	141.3	90.8	44.4	236.8	19.2	45.8
	Jul	87.3	84.0	86.2	50.0	143.8	10.9	46.7
	Aug	71.4	94.3	79.5	91.0	267.0	8.9	75.1
	Sep	98.9	87.8	95.0	85.1	303.3	21.2	51.0
	Oct	109.9	231.0	152.6	94.4	506.3	26.9	68.3
	Nov	126.7	172.5	142.8	80.9	443.7	47.4	83.1
	Dec	146.3	206.7	167.6	50.5	479.3	55.7	75.7
2021	Jan	100.7	114.4	105.5	78.9	278.0	26.7	63.5
	Feb	86.2	68.6	80.0	114.6	319.2	63.3	35.7
	Mar	109.2	153.2	124.7	31.9	313.4	60.1	45.8
	Apr	104.5	88.4	98.8	22.2	477.3	64.7	42.3
	May	91.4	43.6	74.6	5.1	906.5	29.8	47.7
	Jun	98.5	71.9	89.1	31.0	619.6	48.9	56.7
	Jul	71.4	44.9	62.0	12.8	174.7	11.8	49.1
	Aug	104.8	122.4	111.0	23.0	239.8	55.4	59.0
	Sep	119.9	153.8	131.8	21.0	352.4	75.6	63.5
	Oct	128.2	147.8	135.1	39.3	464.5	60.7	71.4
	Nov	133.9	178.6	149.6	28.1	577.4	49.6	69.6

Note: Some graphs has been limited for better readability (Chart 3 & 5)

**Methodology:** Graphical and tabular analysis

**Data Sources:** The data sources for volume in Hectolitres of beverage is sourced from Namibia Breweries, Coca Cola Namibia Bottling Company, ABInBev Namibia (SAB Miller Namibia at Okahandja) and Trade data from NamRa. These are data on production of alcoholic beverages (beer production) and non-alcoholic beverages (soft drinks). Alcoholic beverages production is the total of alcoholic beverage produced from Namibia Breweries and ABInBev Namibia. Whereas, non-alcoholic beverage production data was a sum of soft drinks produced from Namibia Breweries and Namibia Beverages. The unit of measure is Hectolitre (hl).

**Base year:** The beverages sectoral report is harmonised with the quarterly and annual National Accounts base year 2015.

**Index calculations:** The index of beverage production was weighted using the volume data of 2015. The index is then calculated as a ratio of volume of a specific component in a specific month to the total volume of that component in 2015.

**Conversion:** 1 basis point = 0.01 percent

**Revision:** Data for July 2021 was revised based on the new dataset received from the data sources.

**Note:** Some graphs has been limited for better readability (Chart 3 & 5)